

MODELS: UMG2200/32/3
UAGN2200/32/3



SPECIFICATIONS	
Power	2.2kW / 3.0HP
Frequency	50Hz
Discharge	32mm / 1 1/4 inch female BSP
Weight (Excl cable)	38Kg – UAGN2200/32/3 35Kg – UMG2200/32/3
Phase	3ø
Voltage	415
Full Load Ampere	4.8
Maximum Liquid Temperature	0-40° C
Maximum Submersion Depth	30m (100 feet)
Motor type	Dry motor
Motor Speed	2 Pole (2800 rpm)
Motor Insulation	Class B
Motor Protection	IP68
Protector	Auto cut
Motor Bearings	Ball Type
Seal Method	Dual Mechanical seal Upper: Carbon/Ceramic Lower: Silicon/Silicon
Impeller Type	Semi-open
Motor Cover Construction	FC-200 Cast Iron
Motor Casing Construction	FC-200 Cast Iron
Motor Shaft Construction	403 Stainless Steel
Pump Casing Construction	FC-200 Cast Iron
Impeller Construction	FC-200 Cast Iron
Grinder	Heat Treated 440 Stainless Steel
Grinder Ring	Heat Treated 440 Stainless Steel
Cable Material	H07RN-F



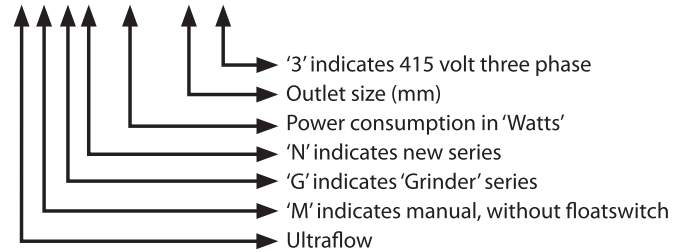
UMGN2200/32/3



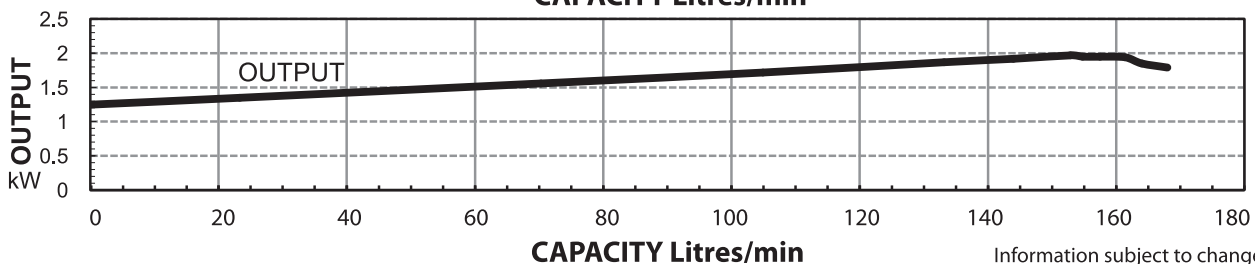
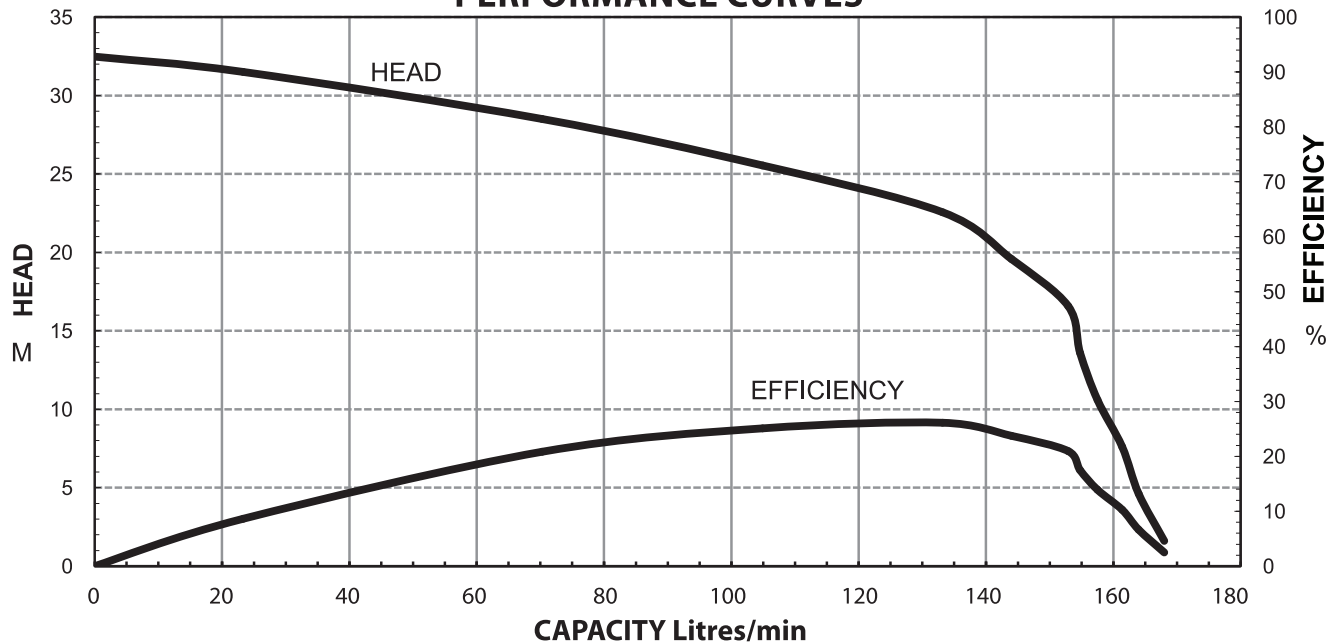
UAGN2200/32/3

MODEL NUMBER STRUCTURE

UMGN2200/32/3



PERFORMANCE CURVES

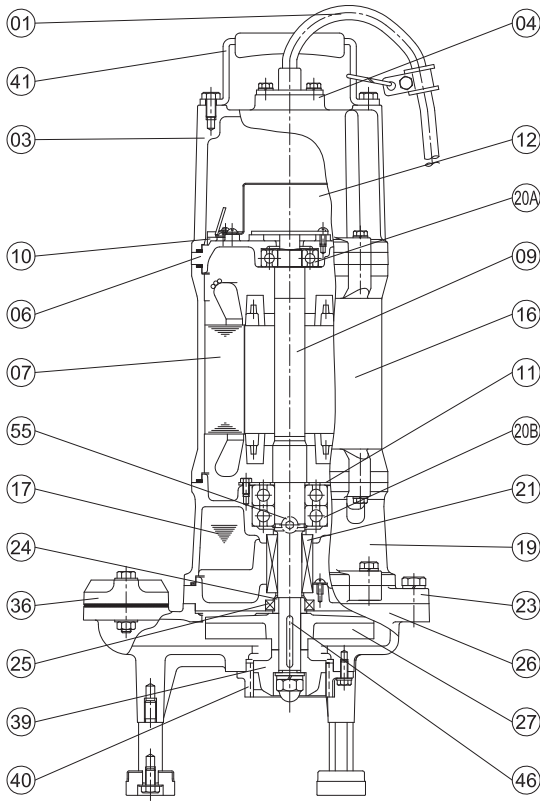


Information subject to change without notice.



97 Gascoigne Street, Kingswood 2747 New South Wales, Australia
 Phone: 02 4731 3940 Fax: 02 4731 3366
 Email: sales@ultraflowaustralia.com.au Web: www.ultraflowaustralia.com.au

SECTIONAL DRAWING & MATERIALS LIST



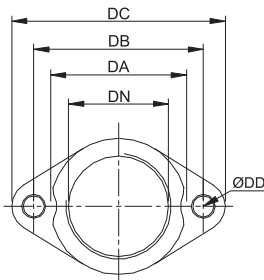
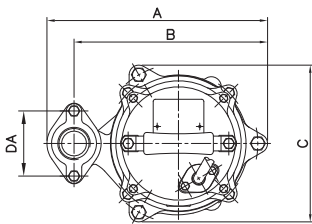
Part Number	Description	Material/Notes
01	Cable	HO7RN-F
03	Upper Motor Cap	Cast Iron FC-200
04	Cable Gland Cover	
06	Upper Bearing Housing	Cast Iron FC-200
07	Motor Stator	
09	Shaft With (With Rotor)	(Shaft) Stainless Steel 403
10	Auto Cut Out Overload	
11	Bearing Fixer	
12	(Transformer relay for UAGN2200/32/3)	
16	Motor Casing	Cast Iron FC-200
17	Lubricant	Turbine Oil
19	Lower Bearing Housing	Cast Iron FC-200
20A	Upper Bearing	
20B	Lower Bearing	
21	Mechanical Seal	Upper: Carbon/Ceramic Lower: Silicon/Silicon
23	Mechanical Seal Housing	Cast Iron FC-200
24	Oil Seal Bush	
25	Oil Seal	Nitrile
26	Pump Casing	Cast Iron FC-200
27	Impeller	Cast Iron FC-200
36	Outlet Flange	Cast Iron FC-200
39	Grinder	Heat Treated 440 Stainless Steel
40	Grinder ring	Heat Treated 440 Stainless Steel
41	Handle	304 Stainless Steel
46	Impeller Key	304 Stainless Steel
47	O'rings	
55	Oil Plug	304 Stainless Steel
FL	Floatswitch (for UAGN2200/32/3)	

To order spare parts as above, it will be necessary to add the model number of the pump after the code listed above. For example, a power lead for a UAGN2200/32/3 would be written as '01-UAGN2200/32/3'.

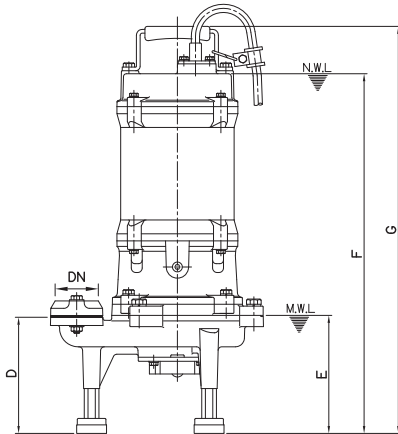
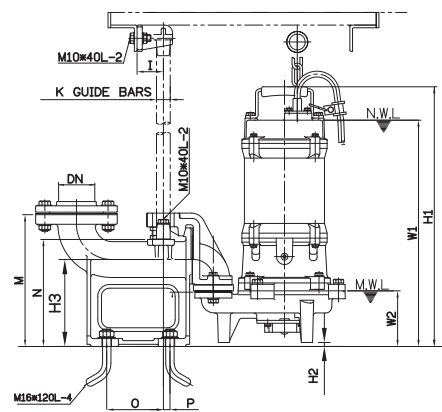
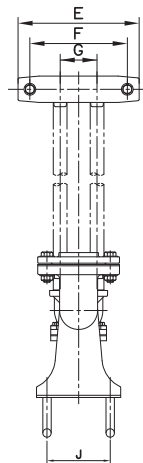
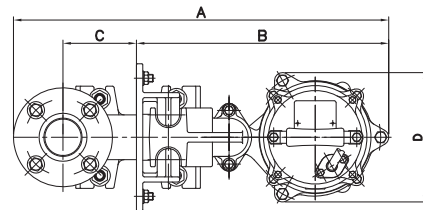
DIMENSIONAL DRAWING

ELBOW (FLANGE) SET

GUIDE RAIL SYSTEM DIMENSIONS USING GR50 GUIDE RAIL KIT



DIMENSIONS - mm				
DN	DA	DB	DC	DD
32	70	84	105	9.5



DIMENSIONS - mm								
UAGN2200/32/3								
DN	DA	A	B	C	D	E	F	G
32	84	285	250	203	156	160	566	630
UMGN2200/32/3								
DN	DA	A	B	C	D	E	F	G
32	84	285	250	203	156	160	483	546

DIMENSIONS - mm																			
UAGN2200/32/3																			
DN	A	B	C	D	E	F	G	I	J	K	M	N	O	P	W1	W2	H1	H2	H3
50	588	395	115	203	230	185	70	50	120	25	250	203	108	13	513	106	577	6	165
UMGN2200/32/3																			
DN	A	B	C	D	E	F	G	I	J	K	M	N	O	P	W1	W2	H1	H2	H3
50	588	395	115	203	230	185	70	50	120	25	250	203	108	13	430	106	493	6	165