



Models: **UMHDDN1100/50/1**
UAHDDN1100/50/1
UMHDDN1100/50/3
UAHDDN1100/50/3



MANUAL



AUTOMATIC

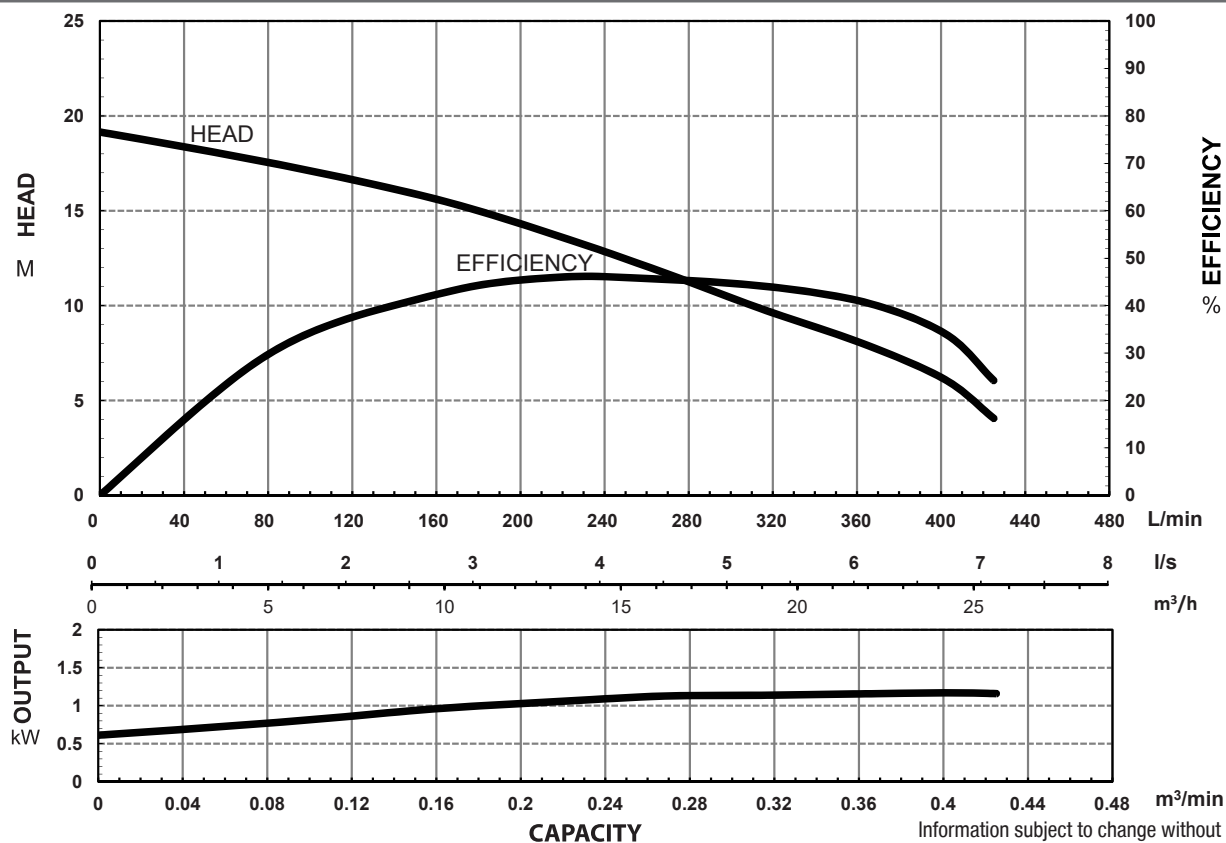
MODEL NUMBER STRUCTURE

U	Ultraflow
M	'M' indicates Manual, without floatswitch 'H' indicates Manual, without floatswitch
HDD	'HDD' indicates 'Heavy Duty Drainage' series
N	'N' indicates series
1100	Power consumption in 'Watts'
50	Outlet size
1	'1' indicates 240 volt single phase '3' indicates 415 volt three phase

SPECIFICATIONS

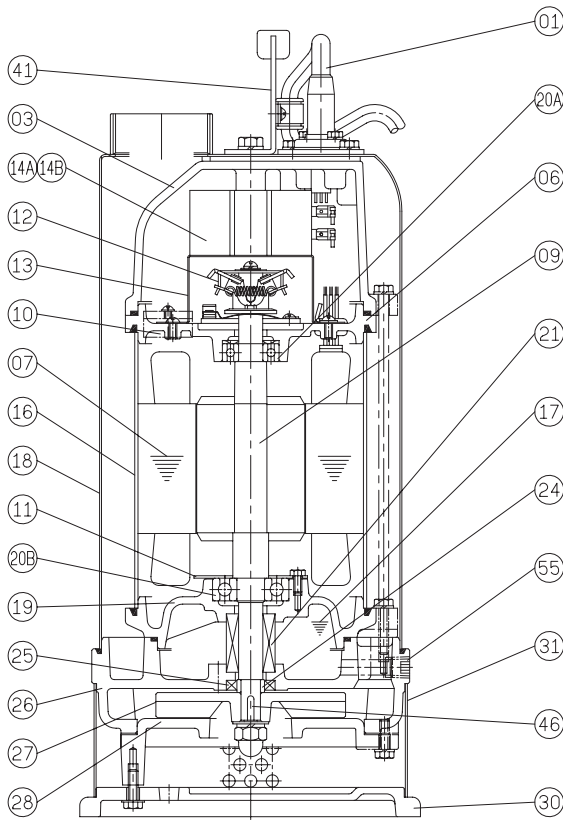
Power	1.1kW / 1.5HP	
Frequency	50Hz	
Discharge	50mm / 2 inch female BSP	
Weight (Excl cable)	28Kg (24Kg - UMHDDN1100/50/3)	
Solid Passage	7.5mm	
Phase	1 \emptyset	3 \emptyset
Voltage	240	415
Full Load Amps	8.0	2.7
Maximum Liquid Temperature	0-40° C	
Maximum Submersion Depth	30m (100 feet)	
Motor type	Dry motor	
Motor Speed	2 Pole (2800 rpm)	
Motor Insulation	Class B	
Motor Protection	IP68	
Protector	Auto cut	
Motor Bearings	Ball Type	
Seal Method	Dual Mechanical seal	
	Upper: Carbon/Ceramic Lower: Silicon/Silicon	
Impeller Type	Semi-open	
Motor Cover Construction	FC-200 Cast Iron	
Motor Casing Construction	304 Stainless Steel	
Motor Shaft Construction	403 Stainless Steel	
Pump Casing Construction	FC-200 Cast Iron	
Outer Pump Jacket Construction	304 Stainless Steel	
Impeller Construction	Hi-Chromium	
Strainer Construction	304 Stainless Steel	
Cable Material	H07RN-F	

PERFORMANCE CURVES



Information subject to change without notice.

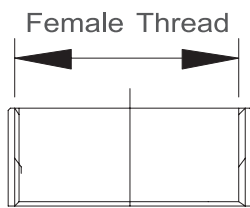
SECTIONAL DRAWING & MATERIALS LIST



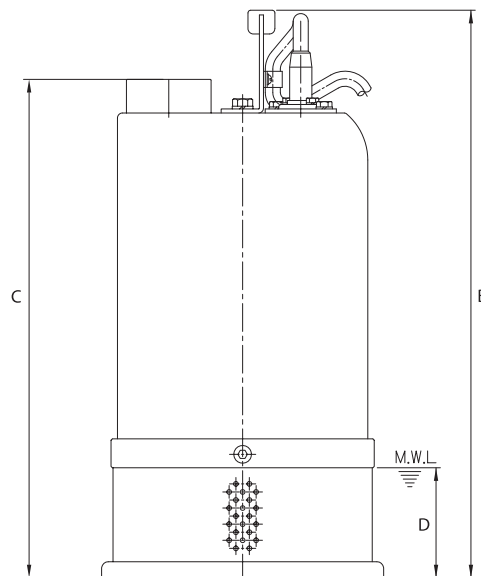
PART NUMBER	DESCRIPTION	MATERIAL
01	Cable	HO7RN-F
03	Upper Motor Cap	Cast Iron FC-200
06	Upper Bearing Housing	Cast Iron FC-200
07	Motor Stator	
09	Shaft (With Rotor)	(Shaft) Stainless Steel 403
10	Auto Cut Out Overload	
11	Bearing Fixer	
12	Centrifugal Switch	
13	Centrifugal Switch Cover	
14A	Capacitor	N/A on 3 phase models
14B	Start Capacitor	Transformer relay for UAHDDN1100/50/3
16	Motor Casing	304 Stainless Steel
17	Lubricant	Turbine Oil
18	Outer Cover	304 Stainless Steel
19	Lower Bearing Housing	Cast Iron FC-200
20A & 20B	Upper Bearing & Lower Bearing	
21	Mechanical Seal	Upper: Carbon/Ceramic Lower: Silicon/Silicon
24	Oil Seal Bush	304 Stainless Steel
25	Oil Seal	Nitrile
26	Pump Casing	Cast Iron FC-200
27	Impeller	High Chromium HiCr
28	Casing Cover	FCD450
30	Pump Base	Cast Iron FC-200
31	Strainer	304 Stainless Steel
41	Handle	304 Stainless Steel
46	Impeller Key	304 Stainless Steel
47	O'rings	
55	Oil Plug	304 Stainless Steel
FL	Floatswitch	

To order spare parts as above, it will be necessary to add the model number of the pump after the code listed above. For example, a power lead for a UAHDDN1100/50/1 would be written as '01-UAHDDN1100/50/1'.

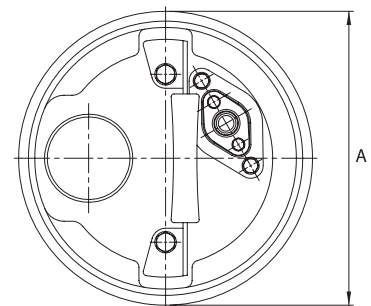
OUTLET DIMENSIONS



mm	Inch
50	2



DIMENSIONAL DRAWING



DIMENSIONS - mm			
UMHDDN1100/50/1, UAHDDN1100/50/1, UAHDDN1100/50/3			
A	B	C	D
210	482	431	85
UMHDDN1100/50/3			
A	B	C	D
210	423	372	85

Information subject to change without notice.