

Series: <b>LSP</b>	Suction × Discharge Bore: <b>25 x 25mm</b>	Motor Output / Pole: <b>0.48kW / 2-pole</b>
-----------------------	---	--



The LSP pump is a single-phase portable self-priming residue drainage pump incorporating a submersible motor. The suction attachment, supplied as standard, makes the pump drain water down to floor level. The pump is equipped with a siphon breaker mechanism that prevents reverse-flow when the pump stops its operation. It is lightweight and easy to carry, as the major components are made of aluminum alloy and synthetic rubber. Since it incorporates a submersible pump, there is absolutely no problem even it is submerged in water. The flow-thru design provides maximum motor cooling efficiency allowing continuous operation at low water levels and extended dry-run capability.

**Selection Table 50 / 60Hz**

Model	Suction × Discharge Bore mm	Motor Output kW	Phase	Starting Method	Pole	Max. Head m	Max. Capacity L/min	Max. Vacuum kPa(mmHg)	Dry Weight kg
LSP1.4S	25 x 25	0.48	1-phase	Capacitor Run	2	6.9 / 7.8	50 / 55	73.3(550)	16.5

SPECIFICATIONS	Model	LSP1.4S	
		LSP-series	
		0.48kW, 1-phase	

<p><b>Type of Pump</b> Self-priming residue drainage pump for construction works, floodwater drainage, and cleaning works, etc.</p> <p><b>Type of Fluid</b> Stormwater, groundwater, wash water, and sand-carrying water</p> <p>Temperature: 0 to 40°C</p> <p><b>Suction x Discharge Bore &amp; Connection</b> 25 x 25mm, Hose Coupling with Union</p> <p><b>Motor Output</b> 0.48kW</p> <p><b>Power Supply</b> Single-phase</p> <p><b>Starting Method</b> Capacitor Run</p> <p><b>Motor</b> Continuous-duty rated, dry-type induction motor</p> <p>Insulation Class: E Degree of Protection: IP68</p> <p>No. of Poles &amp; Speed (Synchronous Speed) 2-pole, 3000/3600min<sup>-1</sup> (50/60Hz)</p> <p>Power Supply Voltages &amp; Rated Currents</p> <table border="0"> <tr> <td>50Hz</td> <td>60Hz</td> </tr> <tr> <td>220V – 3.1A</td> <td>110V – 6.1A</td> </tr> <tr> <td>230V – 2.9A</td> <td>220V – 3.0A</td> </tr> <tr> <td>240V – 2.7A</td> <td></td> </tr> </table> <p><b>Power Cable</b> Sheath: PVC Standard Length: 5m 100 to 240V supply: 1 x 3 x 1.25mm<sup>2</sup>, O.D. 10.1mm</p> <p><b>Dry Weight (excluding cable)</b> 16.5kg</p>	50Hz	60Hz	220V – 3.1A	110V – 6.1A	230V – 2.9A	220V – 3.0A	240V – 2.7A		<p><b>Impeller</b> Vortex impeller deigned for “high-gap structure”, made of urethane rubber</p> <p><b>Cable Entry with Anti-Wicking Block</b> Watertight cable entry with strain-relief device. The anti-wicking block prevents water incursion due to capillary action should the power cable be damaged or the end submerged.</p> <p><b>Bearing</b> Permanently lubricated, deep-groove, double-shielded C3 ball bearings</p> <p><b>Shaft</b> 403 stainless steel</p> <p><b>Shaft Seal (Mechanical Seal)</b> Furnished with a double-face mechanical seal located in oil chamber. Both upper and lower seal faces always run in a clean environment.</p> <p>Upper Seal Face: Ceramic + Carbon Lower Seal Face: SiC + Ceramic</p> <p><b>V-Ring</b> Used as a “Dust Seal”, it protects the mechanical seal from abrasive particles.</p> <p><b>OIL LIFTER</b> Equipped in oil chamber. It forcibly supplies lubricating oil to the mechanical seal and continues to supply the oil to the upper seal faces even if lubricant falls below the rated volume.</p> <p>Type of Lubricating Oil &amp; Volume Turbine Oil (ISO VG32), 150ml</p> <p><b>Motor Protection Device</b> A miniature thermal protector is embedded in winding of the motor. Directly cuts the motor circuit if excessive heat builds up in the motor.</p>
50Hz	60Hz								
220V – 3.1A	110V – 6.1A								
230V – 2.9A	220V – 3.0A								
240V – 2.7A									

<p><b>Standard Accessories</b></p> <p><b>Suction Hose 5m (with Union)</b> <b>Suction Attachment</b></p>
---

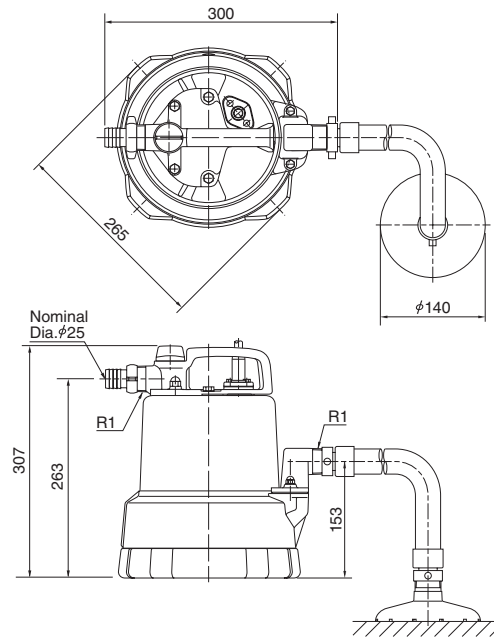
**DIMENSIONS**

**Model**

**LSP1.4S**

**LSP-series**

**25mm**



Unit: mm