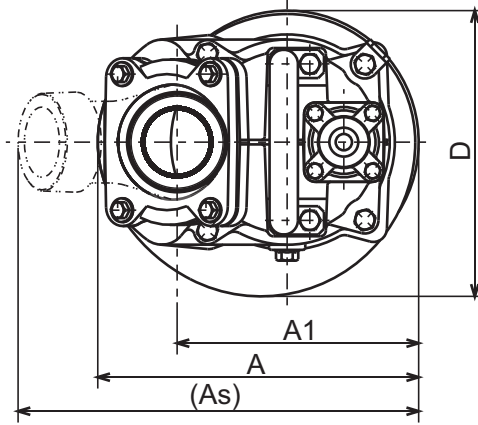


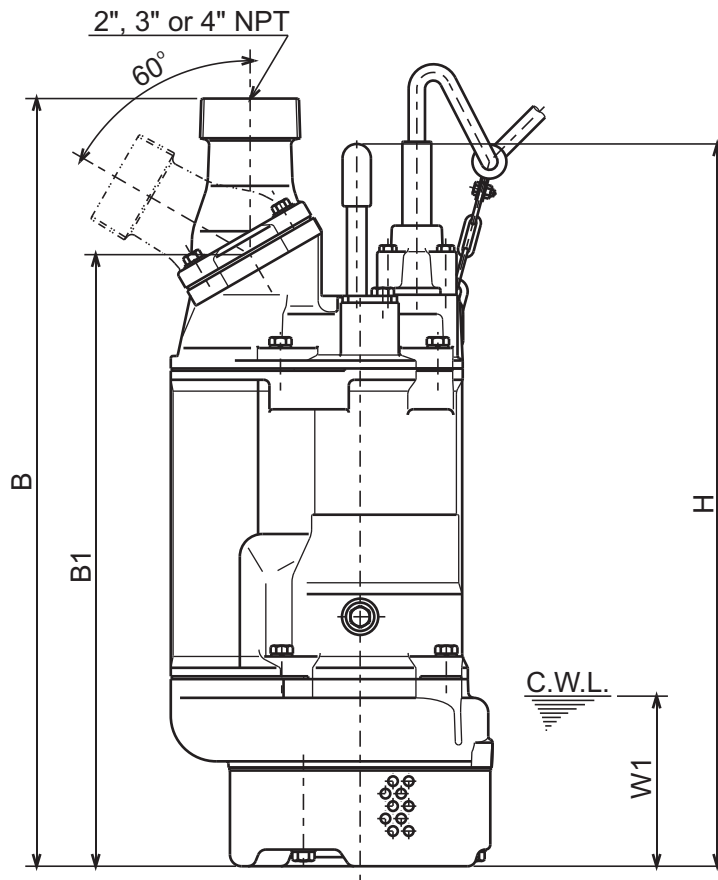


**KTZ - SERIES  
DEWATERING PUMPS**

**DIMENSIONS**



**KTZ23.7-63  
KTZ33.7-63  
KTZ43.7-63**



C.W.L. : Continuous running Water Level

**DIMENSIONS:USCS (Inch)**

Model	HP	NOM. SIZE	Pump & Motor							C.W.L. W1	Wt. (lbs.)
			A	As	A1	B	B1	D	H		
KTZ23.7-63	5	2"	11 1/8	13 5/16	8 3/8	26 1/4	21 1/4	9 15/16	25 1/16	5 7/8	137
KTZ33.7-63	5	3"	11 1/8	13 7/8	8 3/8	26 5/8	21 1/4	9 15/16	25 1/16	5 7/8	137
KTZ43.7-63	5	4"	11 1/8	14 1/2	8 3/8	27 1/16	21 1/4	9 15/16	25 1/16	5 7/8	137

**DIMENSIONS:METRIC (mm)**

Model	kW	NOM. SIZE	Pump & Motor							C.W.L. W1	Wt. (kg)
			A	As	A1	B	B1	D	H		
KTZ23.7-63	3.7	50	283	337	213	667	539	252	637	150	62
KTZ33.7-63	3.7	80	283	353	213	677	539	252	637	150	62
KTZ43.7-63	3.7	100	283	368	213	687	539	252	637	150	62



# KTZ - SERIES DEWATERING PUMPS

# PERFORMANCE CURVE

MODEL	BORE	HP	KW	RPM	SOLIDS DIA	LIQUID	SG.	VISCOSITY	TEMP.
KTZ33.7-63	3"/80mm	5	3.7	3410	0.334"/8.5mm	Water	1.0	1.123 cSt.	60°F
PUMP TYPE	PHASE	VOLTAGE	AMPERAGE	HZ	STARTING METHOD	INS. CLASS			
Dewatering Pump	3	208-230/460/575	15.0-13.6 / 6.8 / 5.3	60	Direct On Line	F			
CURVE No.	DATE	PHASE	VOLTAGE	AMPERAGE	HZ	STARTING METHOD	INS. CLASS		
-	-	-	-	-	-	-	-		

