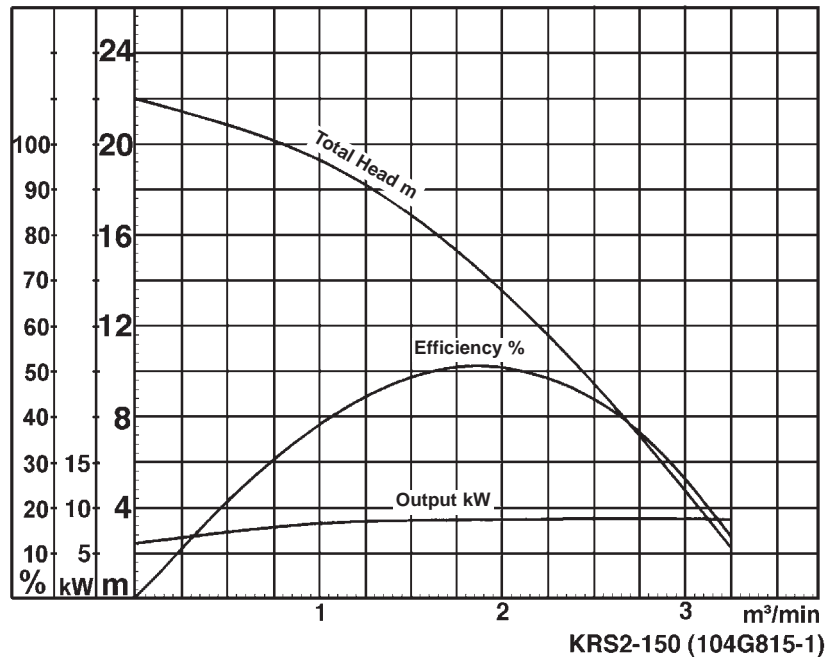
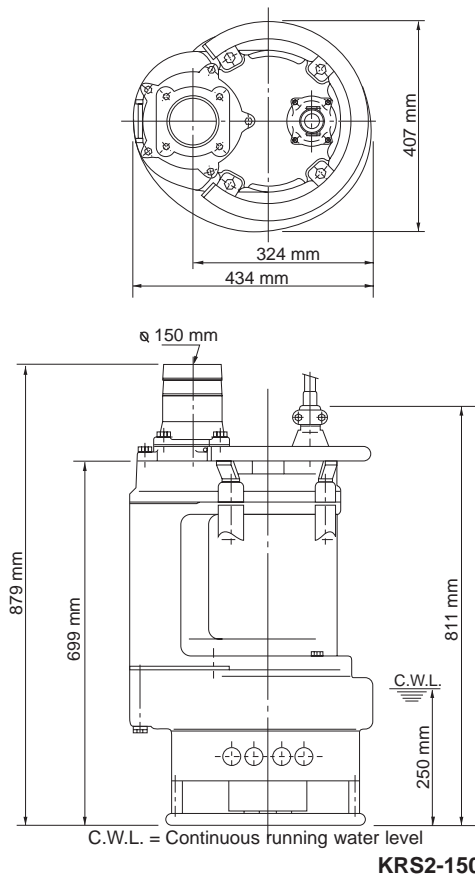


# Data Sheet KRS2-150



## Classification

Electric submersible pump  
 Protection class IP68  
 Depth of submersion max. 30m  
 Open type impeller with Agitator  
 Max. solid handling 30mm  
 Suitable for sludge, slurry, liquids containing sandy mud and bentonite

## Electric Motor

Dry-type submersible induction motor,  
 Insulation class B, 4 poles, 1450 r.p.m.  
 Direct on line start  
 Voltage: 400V, 50Hz, 3-phase  
 Power input: 10,8kW  
 Power output: 9,0kW  
 Nominal current: 18,5A  
 Start current: 155,0A

## Electric Cable

20m H07RN-F 4Cx4mm<sup>2</sup>

## Motor Protection

Circle thermal protector  
 (snap-action bi-metal device)

## Shaft Seal

Double mechanical seal in oil bath  
 additional lubrication by oil lifting device  
 Primary Seal:  
     silicon carbide on silicon carbide  
 Secondary Seal:  
     silicon carbide on silicon carbide

## Bearings

Shielded ball bearings, maintenance-free

## Materials

Impeller:	Chromium iron casting
Agitator:	Chromium iron casting
Casing:	FC200 (EN-GJL-200)
Suction Plate:	Chromium iron casting
Motor frame:	FC150 (EN-GJL-150)
Shaft:	SUS420J2 (EN-X30Cr13)

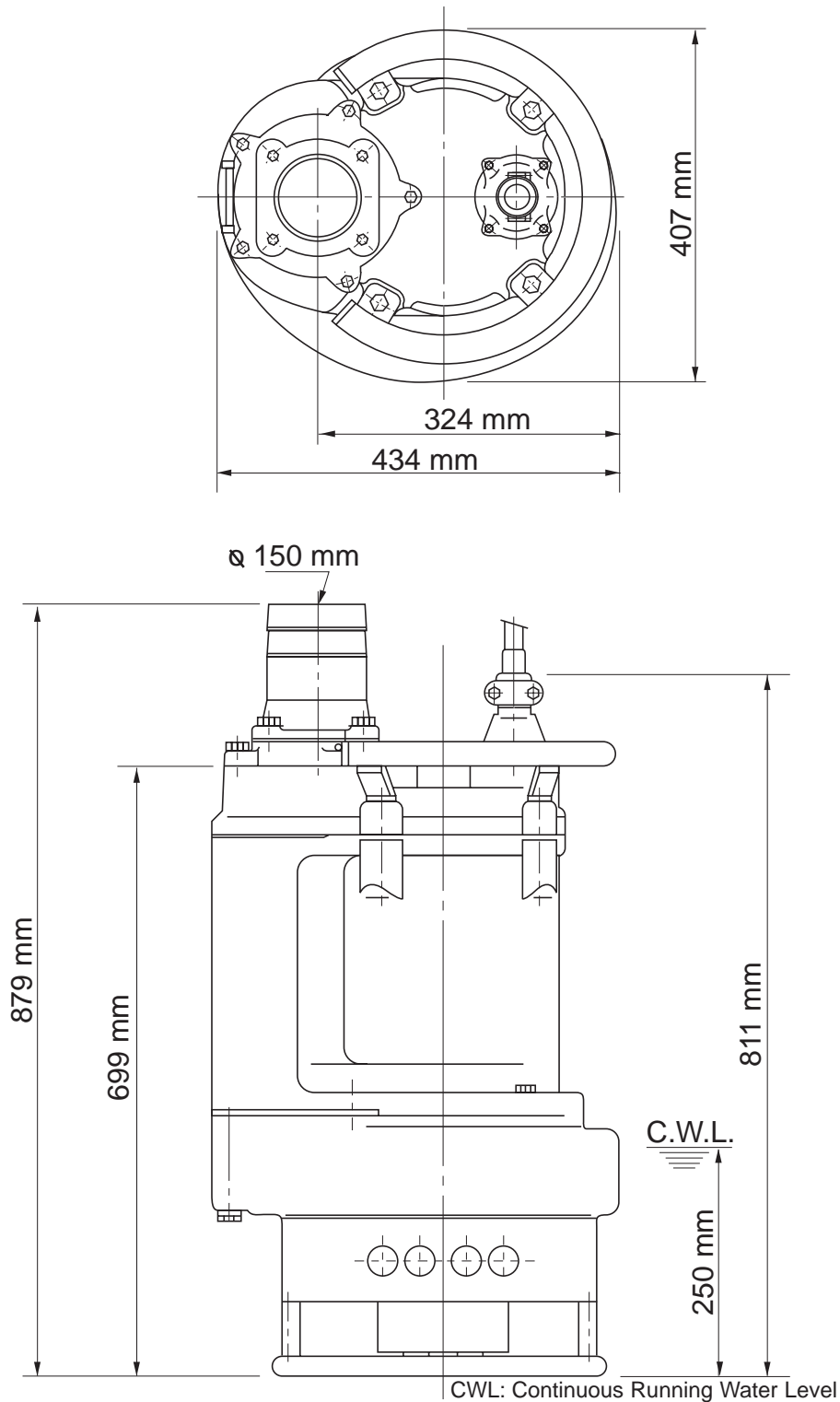
## Discharge Connection

6" (150mm) hose coupling

## Weight

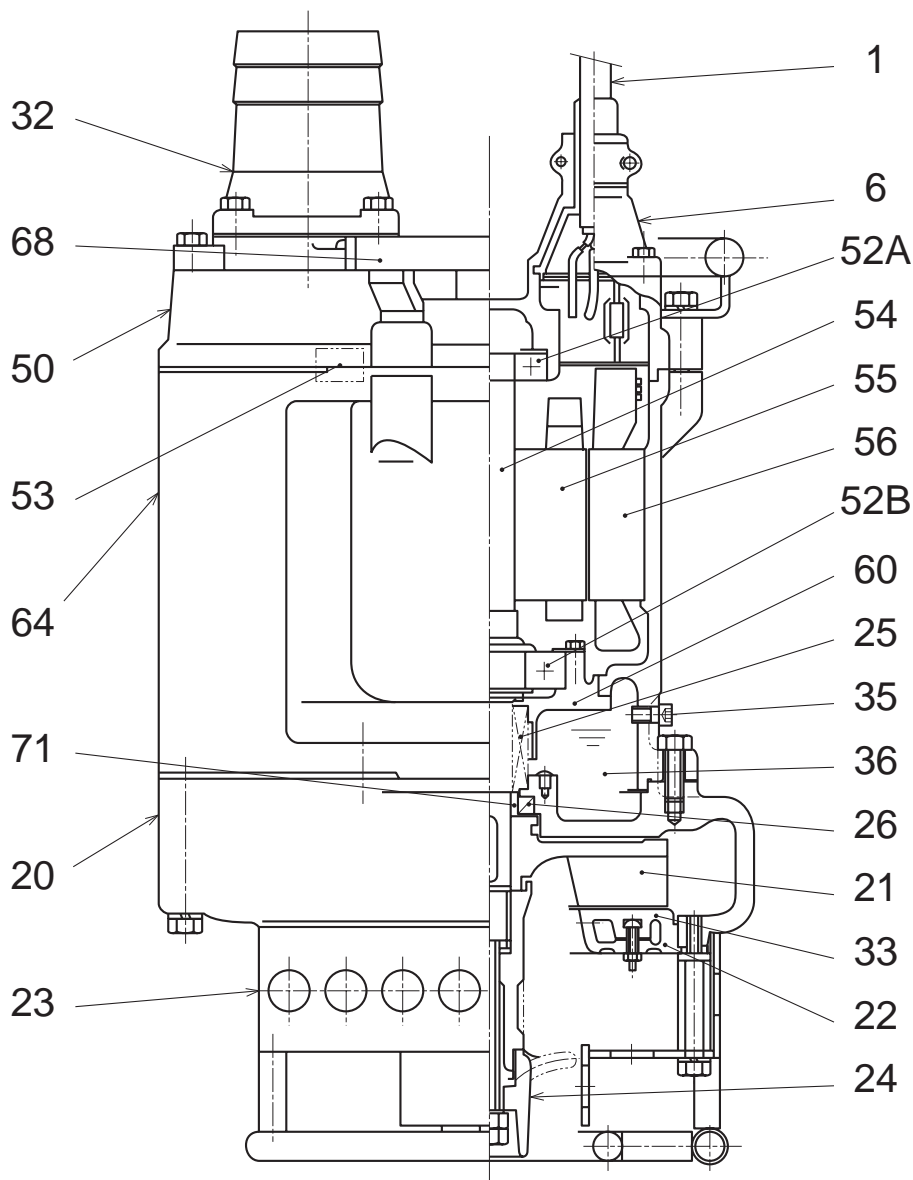
170 kg (dry weight of the pump without cable)

# Dimensional Drawing KRS2-150



**KRS2-150**

# Sectional Drawing KRS2-150



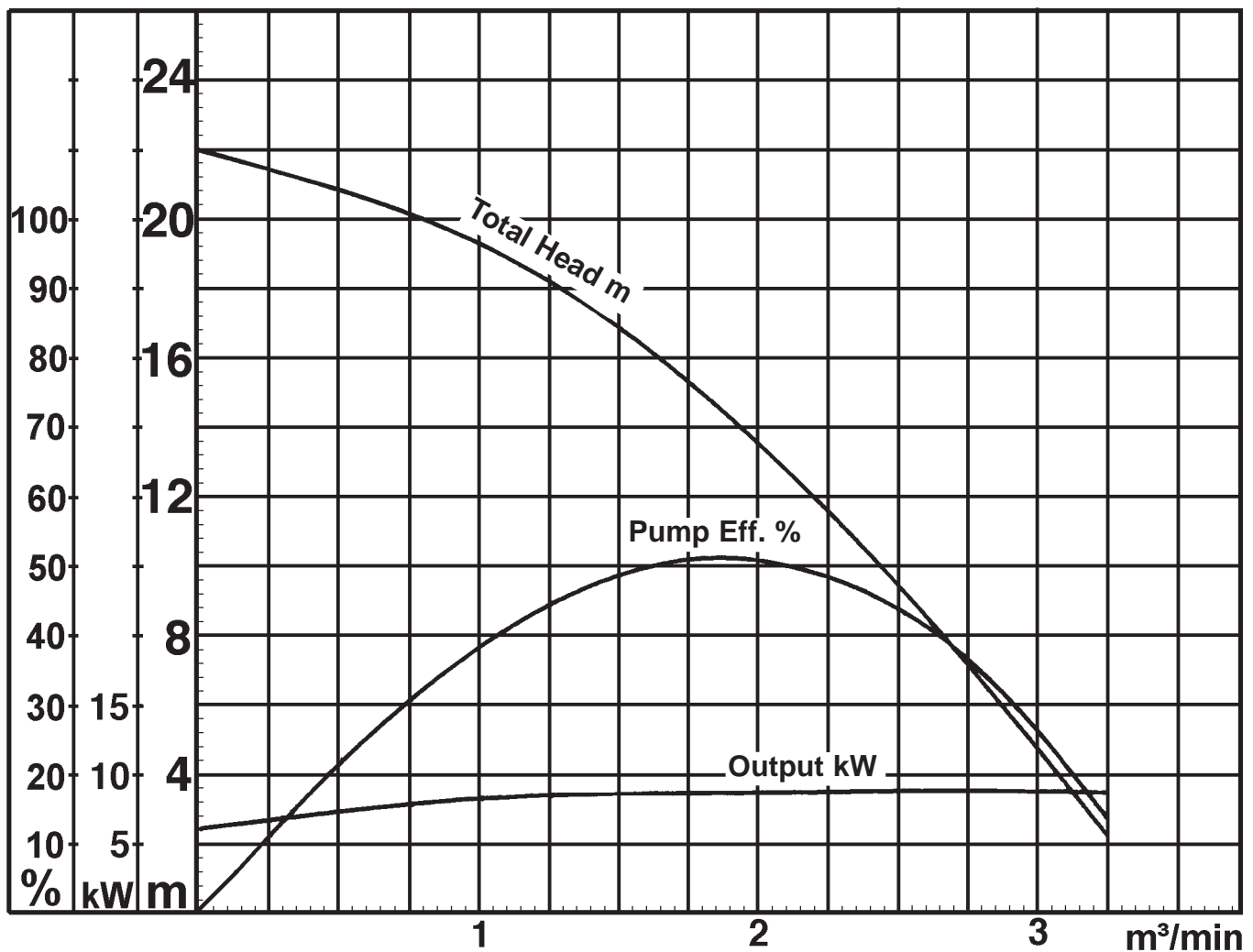
**KRS2-150**

No.	Description	Qty.	Remarks	No.	Description	Qty.	Remarks
1	Cable	1	20m H07RN-F 4Cx4mm <sup>2</sup>	52A	Upper Bearing	1	6307ZZC3
6	Stuffing Box	1	FC200 (EN-GJL-200)	52B	Lower Bearing	1	6310ZZC3
20	Pump Casing	1	FC200 (EN-GJL-200)	53	Motor Protector	1	
21	Impeller	1	Chromium Iron Casting	54	Shaft	1	SUS420J2 (EN-X30Cr13)
22	Suction Cover	1	FC200 (EN-GJL-200)	55	Rotor	1	
23	Strainer Stand	1	Steel Plate / Steel Pipe	56	Stator Complete	1	
24	Agitator	1	Chromium Iron Casting	60	Bearing Housing	1	FC150 (EN-GJL-150)
25	Mechanical Seal	1	H-35	64	Motor Frame	1	FC150 (EN-GJL-150)
26	Oil Seal	1	DD-406211	68	Handle	1	Galvanized Steel Pipe
32	Hose Coupling	1	FC200 (EN-GJL-200)	71	Shaft Sleeve	1	SUS403 (EN-X6Cr13)
33	Suction Plate	1	Chromium Iron Casting				
35	Oil Plug	1	SUS304 (EN-X5CrNi18-10)				
36	Lubricant		Turbine Oil (ISO VG32)				
50	Motor Bracket	1	FC150 (EN-GJL-150)				

# Pump Performance Curve

## KRS2-150

Discharge Bore	150 mm
Total Head	15,0/8,0 m
Capacity	1,8/2,5 m <sup>3</sup> /min
Motor Output	9,0 kW
Motor Input	10,8 kW
Phase	3
Voltage	400 V
Frequency	50 Hz
Rated Current	18,5 A
Starting Current	155,0 A
Poles	4
Revolution	S.S. 1450 r.p.m.
Starting Method	direct on line
Insulation Class	B



**KRS2-150 (104G815-1)**