

**Qty. Description**

1 **SEG.50.40.E.EX.2.50B**



**Note! Product picture may differ from actual product**

Product No.: [99274439](#)

Grundfos SEG grinder pumps are non-self-priming, single-stage, centrifugal pumps with horizontal discharge port, specifically designed for pumping wastewater containing discharge from toilets. The pump is equipped with a grinder system that grinds destructible solids into small pieces to lead them through pipes with a relatively small diameter.

SEG grinder pumps are ideal for use in sparsely populated areas, where gravity sewage systems are not available. Examples include villages, farm areas and areas with large terrain-level differences, where a pressurised system has advantages.

The pump is available for two types of installation:

- submerged installation on auto-coupling systems
- submerged installation, free-standing.

The pump is made of wear-resistant materials, such as cast iron and stainless steel.

These materials ensure reliable operation.

The surface of the pump is smooth to prevent dirt and impurities from sticking.

The corrosion-resistant stainless steel clamp is securing the motor to the pump housing and allow the easy service of the pump.

SmartTrim system allows easy adjustment of the impeller clearance to ensure maximum efficiency during the pump lifespan.

The SEG AUTOADAPT version incorporates a controller, sensors and motor protection.

It only needs to be connected to the main supply.

AUTOADAPT eliminates the need for external sensors, switches and cables in the pit, combining all sensors in a single pump that adapts automatically to the dynamic conditions in the pit.

This simplifies installation, commissioning and operation, and increases reliability.

Features of the AUTOADAPT function:

- pump alternation
- alarm relay output
- random start delay in case of general power shutdown
- self-calibration after each pump cycle
- anti-seizing system
- after-run function.

The range is designed to reduce energy consumption and keep downtime costs to a minimum, while maintaining peak performance throughout the lifespan of the system.

The pump is explosion-proof.

Controls:

Moisture sensor: N  
 AUTOADAPT: Yes

Liquid:

Liquid temperature range: 0 .. 40 °C  
 Selected liquid temperature: 20 °C  
 Density: 998.2 kg/m<sup>3</sup>

Technical:

Type of impeller: GRINDER SYSTEM  
 Primary shaft seal: SIC/SIC

Qty.	Description
1	<p>Approvals: PA-I, ATEX Curve tolerance: ISO9906:2012 3B2</p> <p>Materials: Pump housing: Cast iron EN1561 EN-GJL-200 Impeller: Cast iron EN1561 EN-GJL-200</p> <p>Installation: Maximum ambient temperature: 40 °C Maximum operating pressure: 6 bar Flange standard: DIN Pipework connection: DN50 Pump outlet: DN 50 Pressure rating: PN 10 Maximum installation depth: 7 m Auto-coupling: 97695874</p> <p>Electrical data: Power input - P1: 5.2 kW Rated power - P2: 4 kW Mains frequency: 50 Hz Rated voltage: 3 x 400-415 V Voltage tolerance: +6/-10 % Max starts per hour: 30 Rated current: 8.2/8.2 A Starting current: 43 A Rated current at no load: 3.5 A Cos phi - power factor: 0.92 Cos phi - p.f. at 3/4 load: 0.89 Cos phi - p.f. at 1/2 load: 0.81 Rated speed: 2830 rpm Moment of inertia: 0.011 kg m<sup>2</sup> Motor efficiency at full load: 82 % Motor efficiency at 3/4 load: 82 % Motor efficiency at 1/2 load: 80 % Number of poles: 2 Start. method: DOL Enclosure class (IEC 34-5): IP68 Insulation class (IEC 85): F Explosion proof: yes Explosion protection standard: EN60079 Length of cable: 10 m Cable type: LYNIFLEX Type of cable plug: No plug</p> <p>Others: Net weight: 82.9 kg Danish VVS No.: 391344492 Country of origin: HU Custom tariff no.: 8413709019182742</p>



Company name:

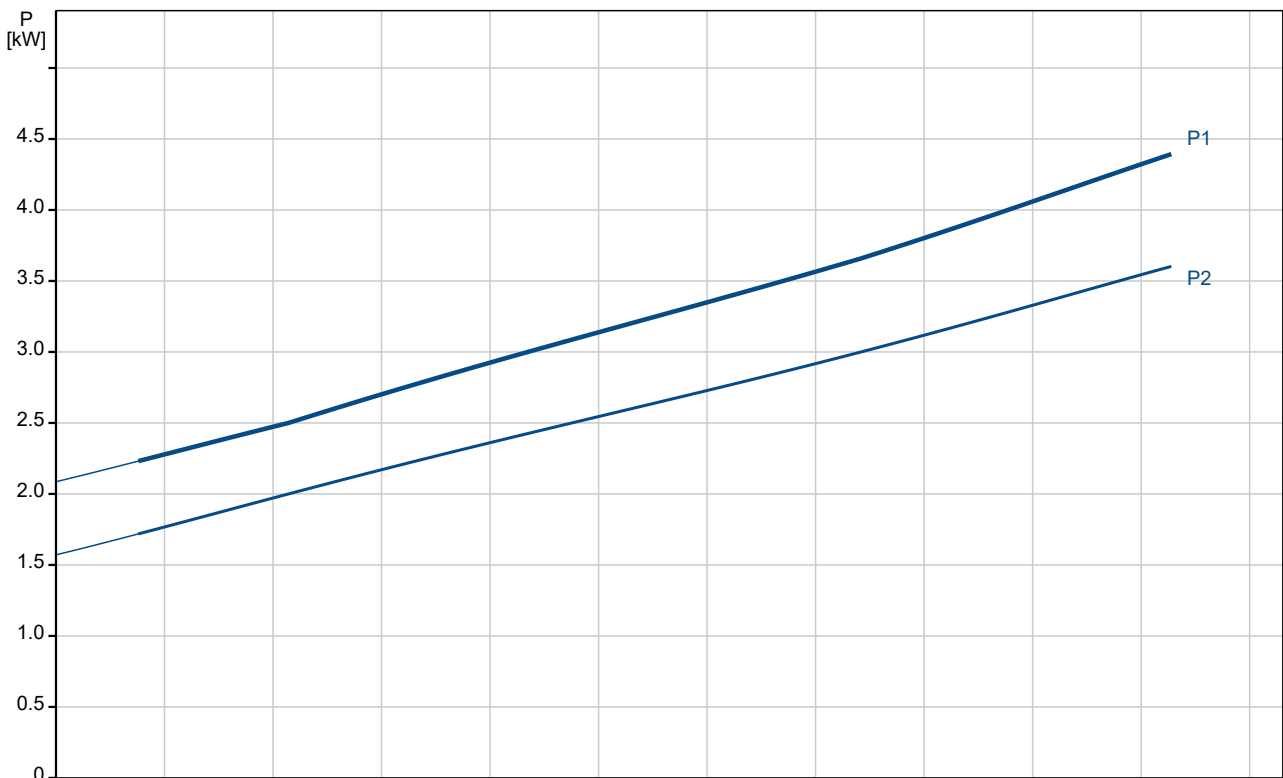
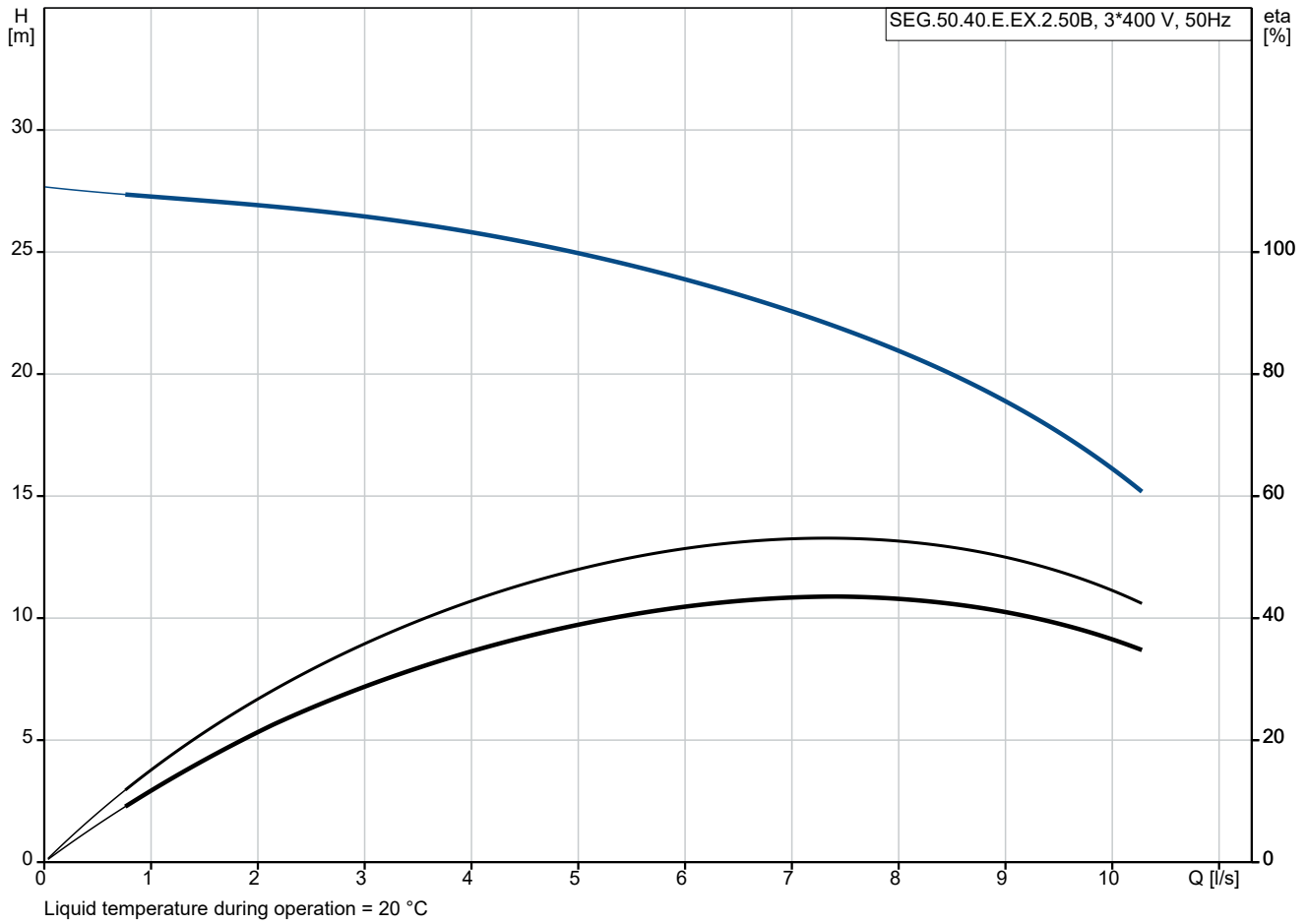
Created by:

Phone:

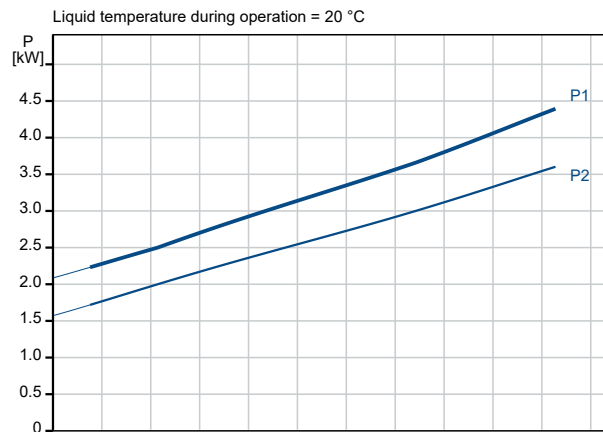
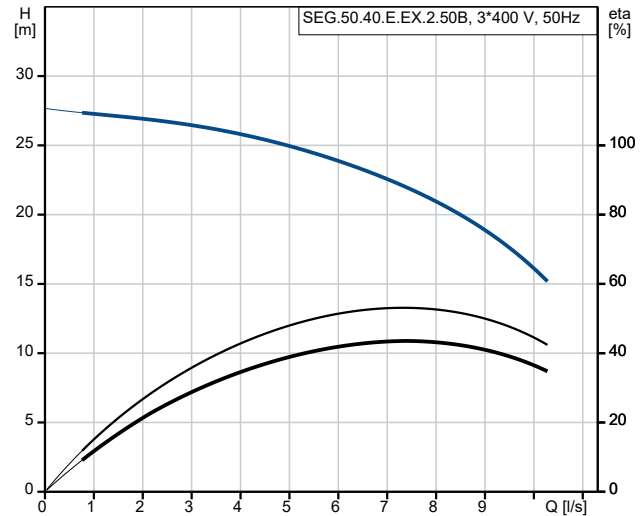
Date:

19/04/2024

### 99274439 SEG.50.40.E.EX.2.50B 50 Hz



Description	Value
<b>General information:</b>	
Product name:	SEG.50.40.E.EX.2.50B
Product No:	99274439
EAN number:	5713826396343
Price:	AUD 8098
<b>Technical:</b>	
Max flow:	10.3 l/s
Head max:	26.8 m
Type of impeller:	GRINDER SYSTEM
Primary shaft seal:	SIC/SIC
Approvals:	PA-I, ATEX
Curve tolerance:	ISO9906:2012 3B2
<b>Materials:</b>	
Pump housing:	Cast iron
Pump housing:	EN1561 EN-GJL-200
Impeller:	Cast iron
Impeller:	EN1561 EN-GJL-200
<b>Installation:</b>	
Maximum ambient temperature:	40 °C
Maximum operating pressure:	6 bar
Flange standard:	DIN
Pipework connection:	DN50
Pump outlet:	DN 50
Pressure rating:	PN 10
Maximum installation depth:	7 m
Inst dry/wet:	SUBMERGED
Auto-coupling:	97695874
<b>Liquid:</b>	
Liquid temperature range:	0 .. 40 °C
Selected liquid temperature:	20 °C
Density:	998.2 kg/m <sup>3</sup>
<b>Electrical data:</b>	
Power input - P1:	5.2 kW
Rated power - P2:	4 kW
Mains frequency:	50 Hz
Rated voltage:	3 x 400-415 V
Voltage tolerance:	+6/-10 %
Max starts per hour:	30
Rated current:	8.2/8.2 A
Starting current:	43 A
Rated current at no load:	3.5 A
Cos phi - power factor:	0.92
Cos phi - p.f. at 3/4 load:	0.89
Cos phi - p.f. at 1/2 load:	0.81
Rated speed:	2830 rpm
Moment of inertia:	0.011 kg m <sup>2</sup>
Motor efficiency at full load:	82 %
Motor efficiency at 3/4 load:	82 %
Motor efficiency at 1/2 load:	80 %
Number of poles:	2
Start. method:	DOL
Enclosure class (IEC 34-5):	IP68
Insulation class (IEC 85):	F
Explosion proof:	yes
Explosion protection standard:	EN60079
Built-in motor protection:	THERMAL SWITCH
Thermal protec:	EXT.
Length of cable:	10 m





Company name:

Created by:

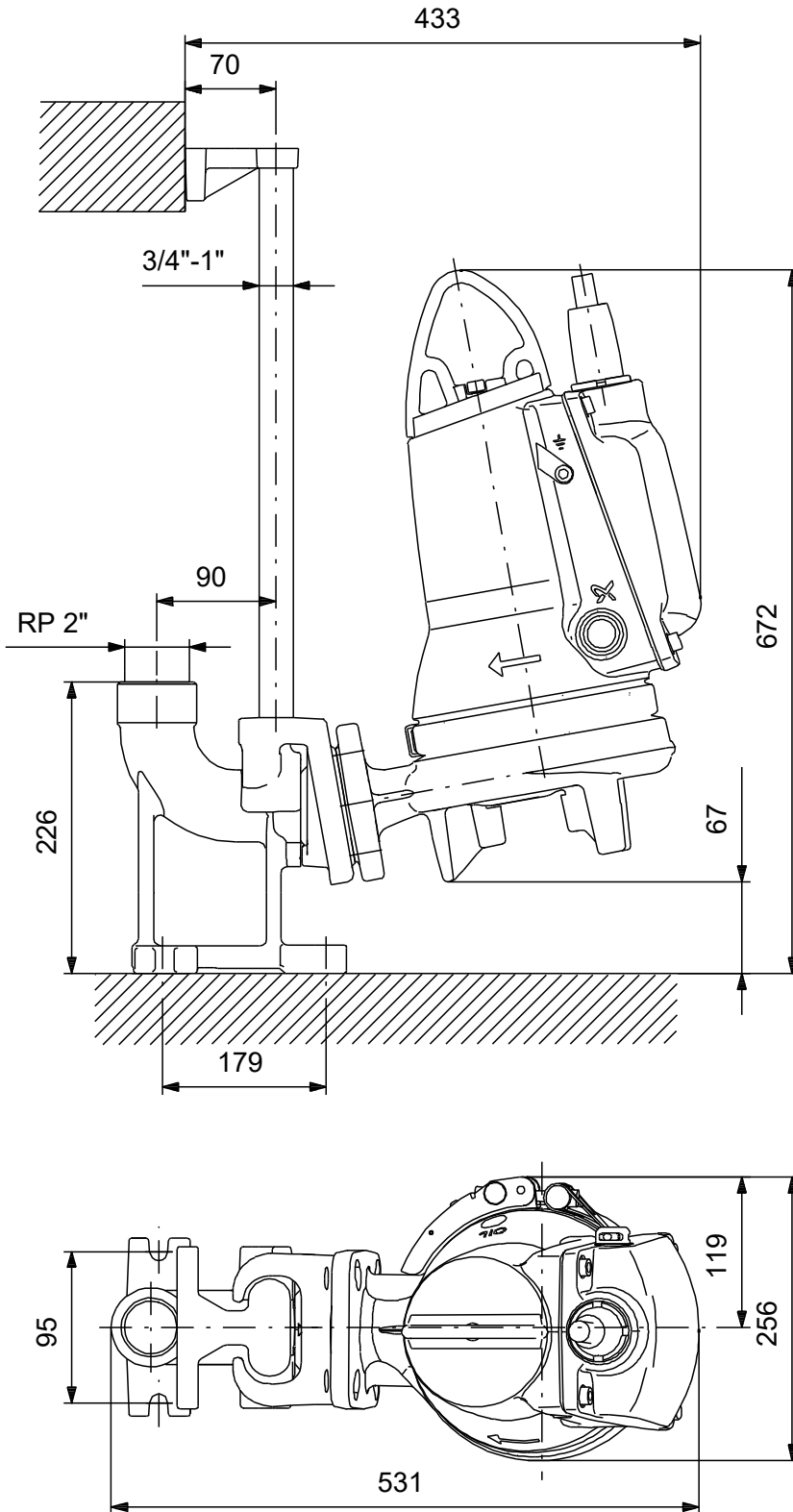
Phone:

Date:

19/04/2024

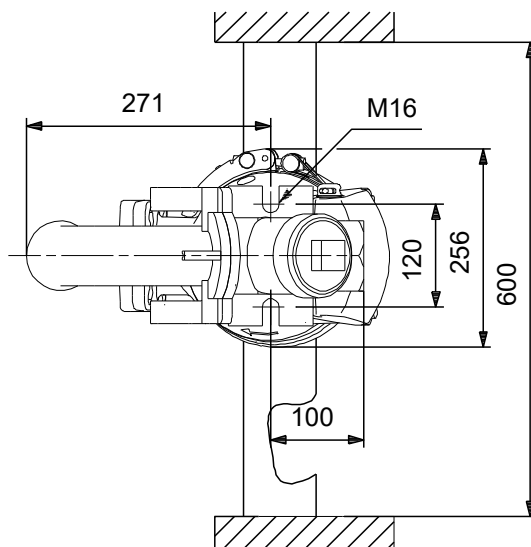
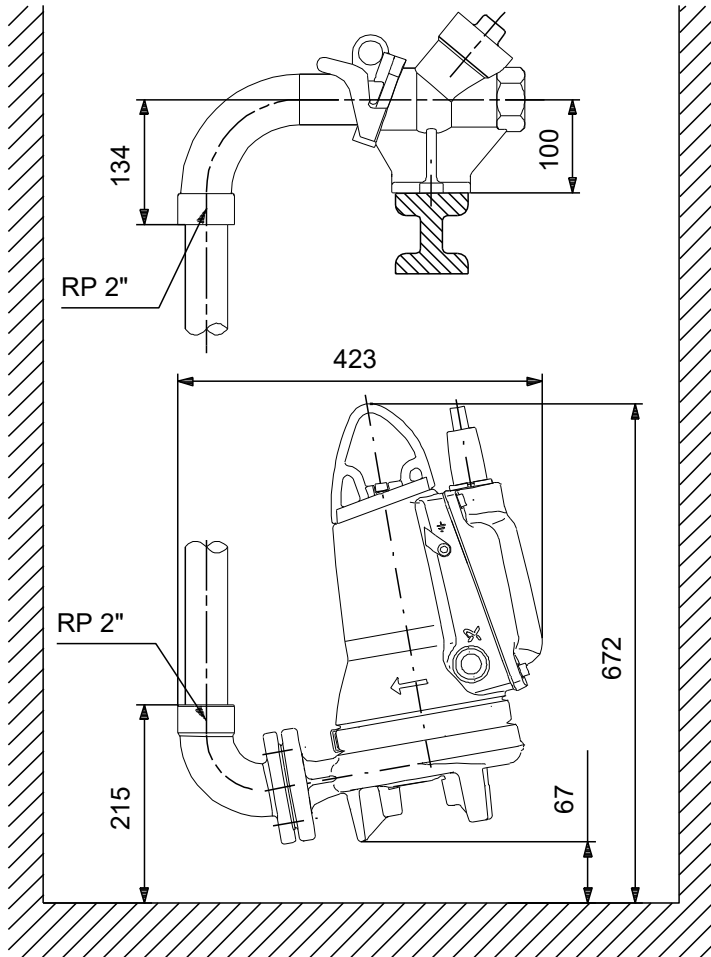
Description	Value
Cable type:	LYNIFLEX
Type of cable plug:	No plug
<b>Controls:</b>	
Control box:	N
Additional I/O:	External
Moisture sensor:	N
AUTOADAPT:	Yes
<b>Others:</b>	
Net weight:	82.9 kg
Danish VVS No.:	391344492
Country of origin:	HU
Custom tariff no.:	8413709019182742

## 99274439 SEG.50.40.E.EX.2.50B 50 Hz



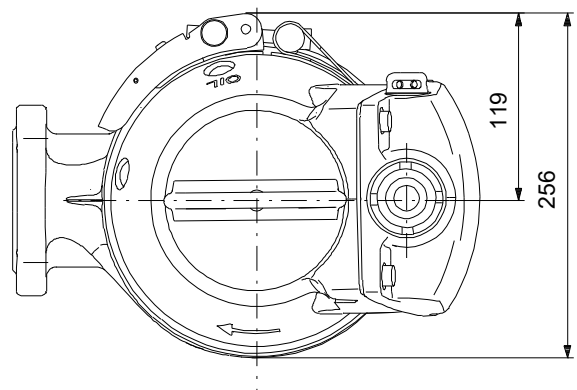
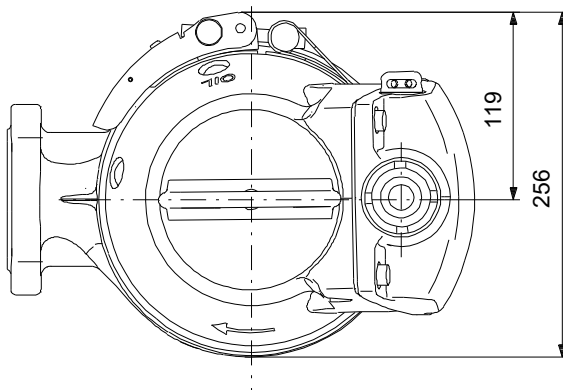
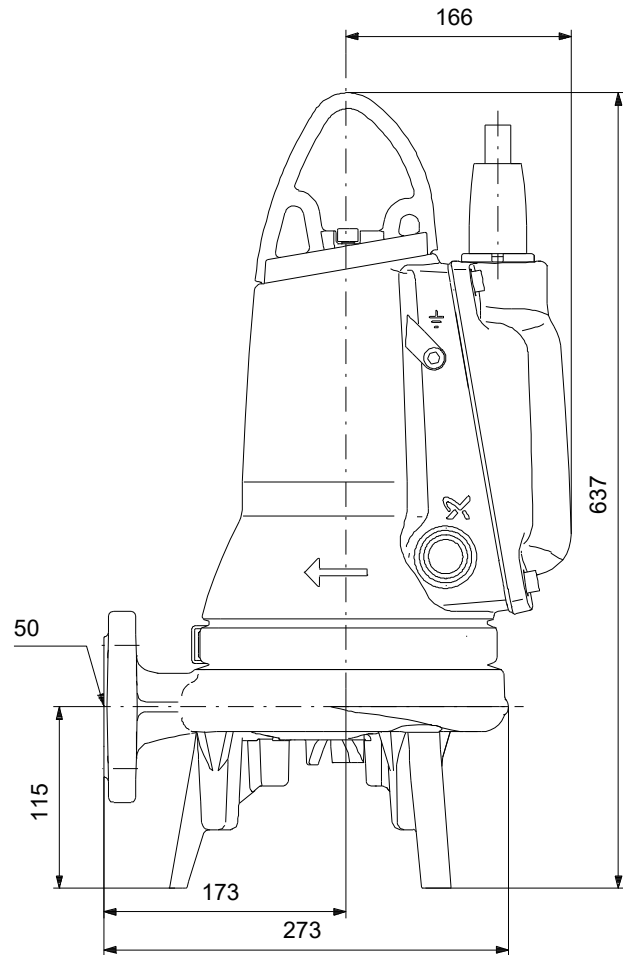
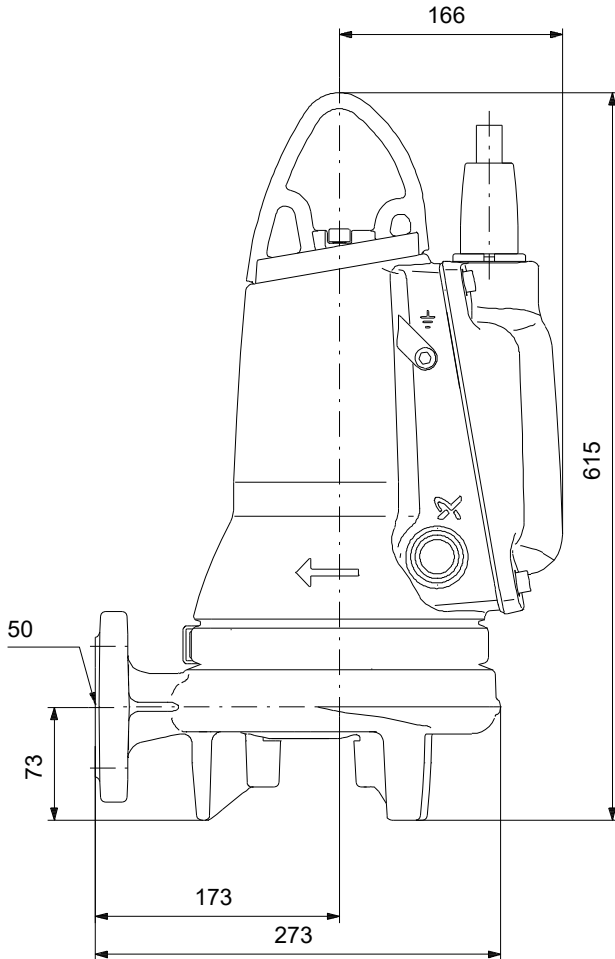
Note! All units are in [mm] unless others are stated.  
Disclaimer: This simplified dimensional drawing does not show all details.

## 99274439 SEG.50.40.E.EX.2.50B 50 Hz



Note! All units are in [mm] unless others are stated.  
Disclaimer: This simplified dimensional drawing does not show all details.

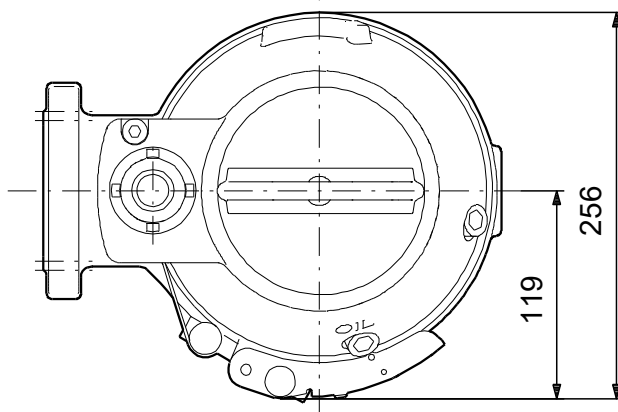
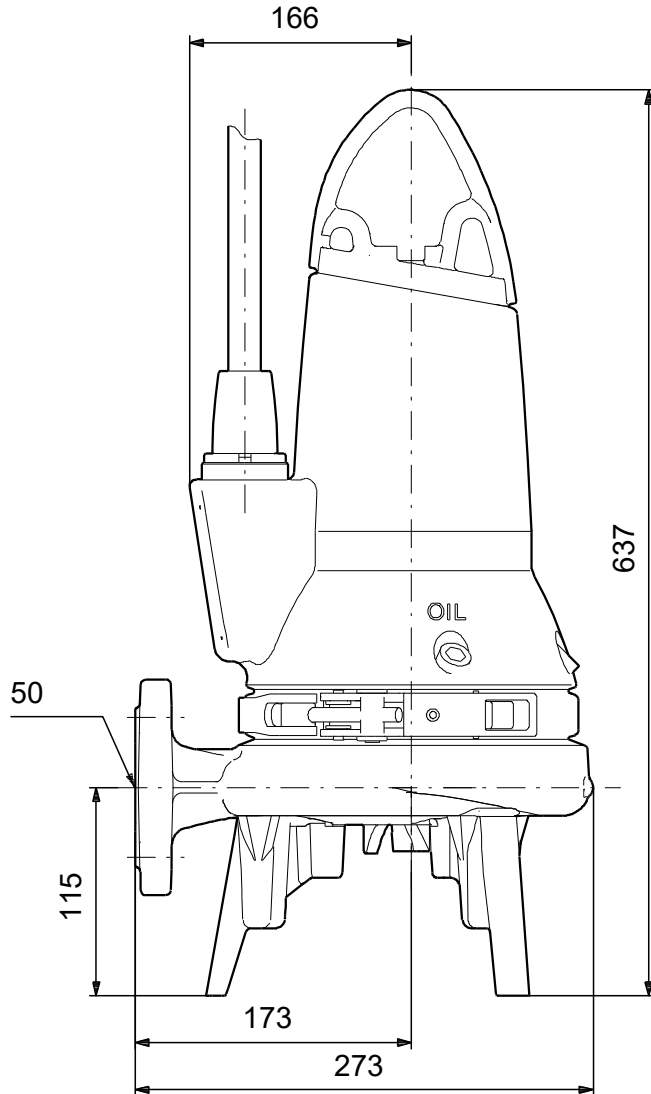
## 99274439 SEG.50.40.E.EX.2.50B 50 Hz



Note! All units are in [mm] unless others are stated.  
Disclaimer: This simplified dimensional drawing does not show all details.



## 99274439 SEG.50.40.E.EX.2.50B 50 Hz



Note! All units are in [mm] unless others are stated.  
Disclaimer: This simplified dimensional drawing does not show all details.