



PUMPS AUSTRALIA

BETTER • FASTER • EASIER

REEFE HOT WATER CIRCULATING PUMP INSTRUCTION MANUAL



| CODE | MODEL | SPEED | POWER | | MAXIMUM | |
|------|---------|-------|-------|--------|--------------|----------|
| | | | AMPS | P1 (W) | FLOW (L/min) | HEAD (m) |
| 7372 | RHC2060 | 3 | 0.45 | 100 | 48 | 6 |
| | | 2 | 0.35 | 70 | 35 | 4.5 |
| | | 1 | 0.25 | 55 | 21 | 2.5 |

| SIZE | | |
|--------------|--------------|---------------|
| Bare Pump | With Union | With Bush |
| PORT TO PORT | LENGTH | Length |
| 130mm | 185mm | 150mm |
| PORTS | PORTS | PORTS |
| 25mm/1" MBSP | 20mm/¾" MBSP | 32mm/1¼" MBSP |

| | | | | | | |
|-------|---------|---|------|-----|-----|-----|
| 18828 | RHC3280 | 3 | 1.1 | 245 | 166 | 8.2 |
| | | 2 | 0.85 | 190 | 77 | 7 |
| | | 1 | 0.6 | 135 | 33 | 5 |

| Bare Pump | With Union |
|--------------|---------------|
| PORT TO PORT | PORT TO PORT |
| 180mm | 230mm |
| PORTS | PORTS |
| 50mm/2" MBSP | 32mm/1¼" MBSP |

*** MAX MAINS PRESSURE 500kPa as per AS3500.1 ***

CIRCULATOR PUMP FUNCTION AND APPLICATION

1. Maximum Mains Pressure 500kPa as per AS 3500.1
2. Maximum water temperature of 110°C
!! IMPORTANT !! Tempering valves should be installed in accordance with Australian Standard AS3500.4.2 Clause 1.6. and manufacturer's instructions.
3. This pump is used to circulate clean, fresh hot water around a ring main so users have quick access to hot water when the pump is on.
4. Cold water applications are also suitable, minimum water temperature of 5°C
5. It cannot be used if the pipework is not in a ring configuration – the water must be able to **CIRCULATE**.
6. Ensure the pump is sized correctly according to the demand.
7. To reduce power cost and prolong the life of the pump it is recommended that the pump is coupled with a timer, and the timer is set so that the pump only turns on when there is likely to be demand for hot water.
8. The pump must be installed in the correct orientation, the motor shaft must always be HORIZONTAL, refer to page 5
9. Always bleed the air out of the pump before turning it on, refer page 6
10. The pump must be protected from the weather, if used outdoors it must have a weatherproof shelter installed.
11. It is the installers responsibility to ensure that the installation is compliant with relevant PLUMBING and ELECTRICAL regulations and LOCAL COUNCIL or SHIRE regulations or by-laws.
12. It is not recommended to mix different brands of pumps in the one ring-main, it can lead to water hammer and destroy the pump impellers, this situation is not covered by warranty.

WARNING!! This pump is not approved nor intended for use in swimming pools, spa pools or spa baths.

TIP: use pipe lagging to reduce heat loss in the ring-main

IMPORTANT NOTICE

This pump is not suitable for outdoor use it must be protected from the weather by way of a weatherproof enclosure. Failure to do so voids all warranty.

This pump must not be run dry, it must be installed using barrel-union connections, by a licenced person who is authorised to install this type of device. It MUST be installed so that if it were to leak, fail to operate, or run without stopping, that it would NOT cause damage or loss. It must be connected to an electrical circuit with a RCD (Safety Switch) having a rated residual operating current not exceeding 30mA. Disconnect pump from power before servicing or repairing the pump. Read and follow the instructions, warranty is void if instructions are not followed.

Ascento Group Australia, LYTTON, QLD P: 1800 807 604

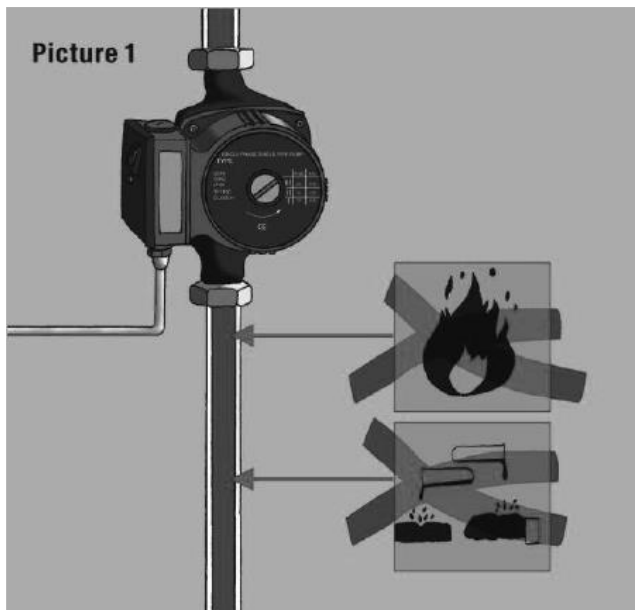
IMPORTANT!!

The pump bearing is lubricated by the pumped water. This pump cannot run dry for periods exceeding 10 seconds. Do not pump any flammable or corrosive liquids.

DANGER!!

USE FOR CLEAN FRESH WATER ONLY WITH MAXIMUM TEMPERATURE OF 110°C!!

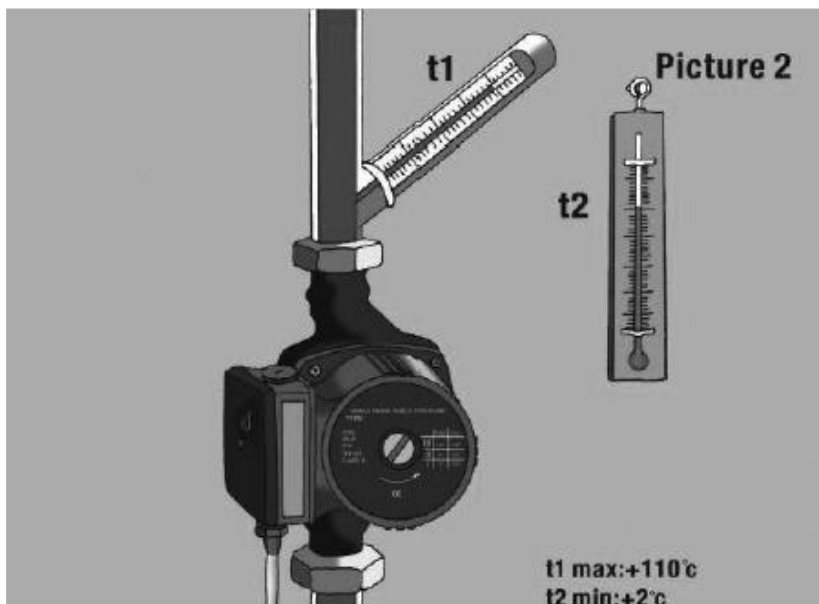
You **MUST** bleed the air out of the pump before turning on the power.



DANGER!!

NOT to be used to pump flammable or hazardous liquids – suitable for clean fresh water only. Do not use in HAZARDOUS locations!!

The ambient temperature of the environment must be lower than that of the liquid being pumped.



Max Water Temp: 100°C

Max Ambient Temp: 40°C

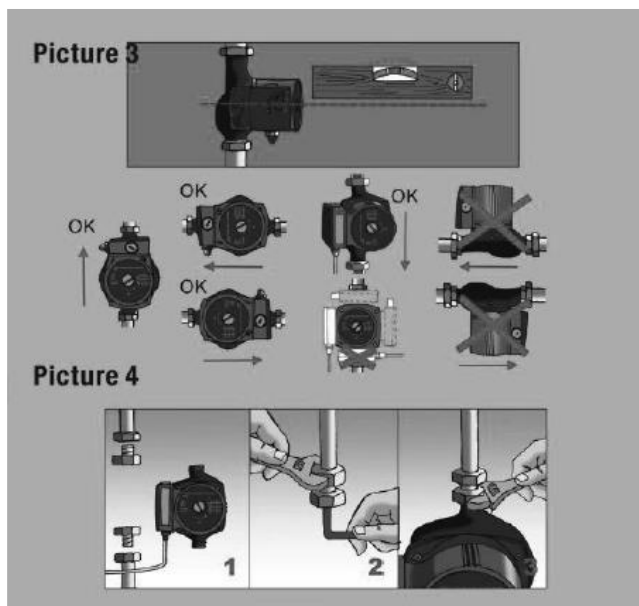
Min Water Temp: 5°C

Min Ambient Temp: 2°C

Installation

This pump must be installed horizontally and must be level (picture 3)

Pump must be installed as per illustration below (picture 4)

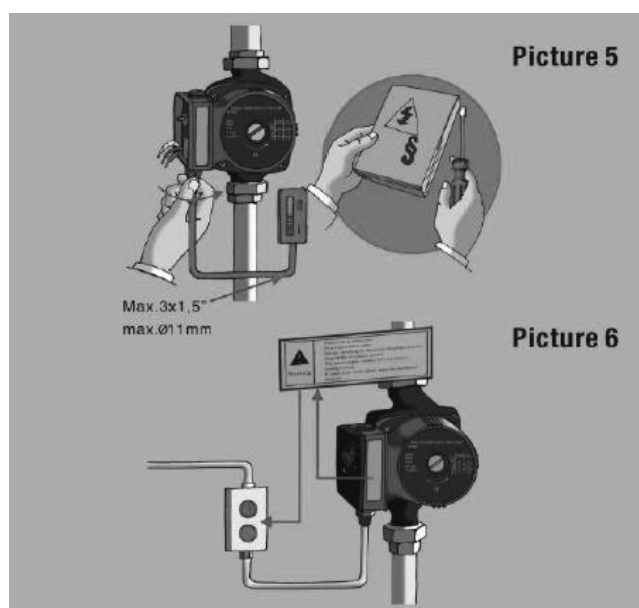


IMPORTANT!!

- *Incorrect orientation voids all warranty
- *Pump must be protected from the weather

Only qualified and competent tradespeople should attempt installation or electrical work.

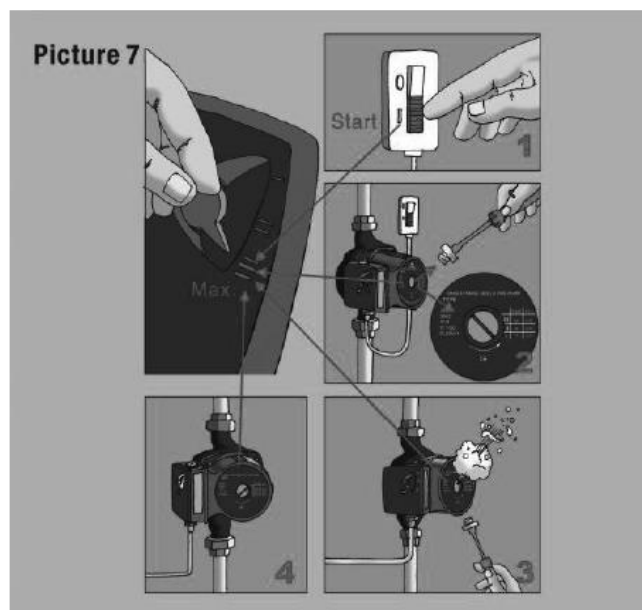
Please read all instructions and warnings carefully before installation.



IMPORTANT!!

It is the installers responsibility to ensure the installation complies with all applicable PLUMBING and ELECTRICAL regulations.

Once installed, bleed air prior to operation, as shown in picture 7.

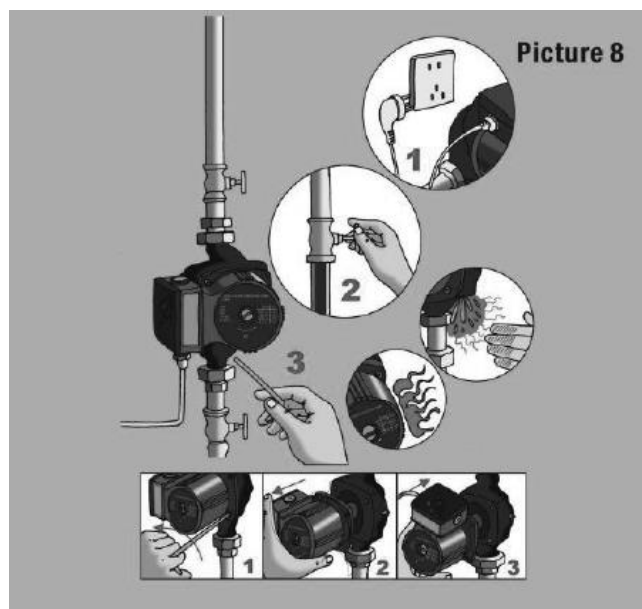


WARNING!!

Operating pump with air in it voids the warranty.

Maintenance and Repair

Should the power cable need replacement, it must be installed by a licenced electrician.



DANGER!!

- *Disconnect from power before touching the pump
- *Pump will be HOT – allow to cool before touching
- *Pump MUST be connected to a circuit protected by an RCD (Safety Switch)

Troubleshooting Guide

| Fault | Possible Cause | Possible Solution |
|----------------------------|---|--|
| Pump not starting | Power is not connected correctly | Check fuse and electrical connection |
| | Faulty Capacitor | Replace Capacitor |
| | Bearing failure preventing pump from turning | Run at high speed for a short time or loosen rotor using a screwdriver at shaft end |
| | Blockage in pump due to dirty water | Disconnect the pump and clean |
| Noise in the system | Pump flow is too high | Change to a lower speed |
| | Air in the system | Bleed the air out of the system |
| Noise in the pump | Air in the pump | Bleed the air out of the pump |
| | Inlet pressure is too low | Increase the inlet pressure. Bleed any air out of the system |

WARRANTY CONDITIONS

1. Our goods come with guarantees that cannot be excluded under the Australian Consumer Law. If you are a consumer as defined by the Australian Consumer Law, you are entitled to a replacement or refund for a major failure and for compensation for any other reasonably foreseeable loss or damage. You are also entitled to have the goods repaired or replaced if the goods fail to be of acceptable quality and the failure does not amount to a major failure. If you (the purchaser) do not fall within the meaning of 'consumer' in the Australian Consumer Law the provisions of the Australian Consumer Law will not apply to you. The following conditions form part of the instructions and do not over-ride your statutory rights.
2. 2 Year Warranty against Defects: This warranty covers failure due to manufacturing defects for REEFE Hot Water Circulator Pumps purchased from Ascento Group Australia, and used in mainland Australia. We shall replace the pump when we ascertain that the fault is due to manufacturing defect, during the 2 year period from date of purchase. If you require a refund, you must return the item to the original place of purchase.
3. Faults or losses or failure caused due to: Accidents, misuse, lack of maintenance, not following the instructions, damage caused by lightning strike, or power surges, or power spikes or power brownouts, or operating the pump on power other than correct mains power, or operating the pump on power supplied by a domestic generator, power supply of voltage less than 230V, power supply of voltage above 240V - are not covered by warranty. Improper use is defined by us, at our sole discretion.
4. The complete Impeller set (including shaft), Seals and O-rings are all wearing items and therefore are not covered for "normal wear and tear". They are covered by warranty if they are faulty due to a manufacturing defect.
5. Warranty will be void if any tampering or removal of identification labels or electrical cables has occurred, or any non-genuine parts have been fitted, or repairs have been carried out by unqualified persons. No warranty applies for goods sold or used for HIRE or RENT or LEASE. No warranty applies for pumps used on MINE SITES, HAZARDOUS LOCATIONS, and REMOTE LOCATIONS, and other UNSUITABLE LOCATIONS, as defined by us, at our discretion.
6. The Warranty excludes accidental or deliberate breakages, normal wear and tear, fading or breakdown due to the effect of exposure to sunlight or chemicals or any other external factor that may affect the life of the product.
7. This product is guaranteed as fit for the purpose of pumping CLEAN HOT WATER in normal domestic use. Performance data quoted is generally from test data and is approximate and does not take into account factors in the installation such as loss of pressure and flow due to pipework & pipe-fittings & valves. It is the purchaser's responsibility to ensure that the product is fit for their purpose and of sufficient size & performance for their application.
8. IMPORTANT: No electrical appliances last forever. Therefore ALL installations of pumps must be constructed to allow the owner to easily remove the pump for servicing, and to easily remove the pump for replacement, warranty replacement or upgrading. A ball-valve or gate-valve must be fitted on both the delivery and the discharge sides of the pumps. Warranty replacement does not include costs of removal and re-installation as we have no control over the method of installation.
9. Before installing or servicing disconnect from the power supply.
10. The Pump MUST NOT be installed in any manner that if it were to leak, or fail to work, that it would cause damage or loss to property or persons. It MUST be installed in a well-ventilated and drained area. All warranty is void if this condition is not heeded and no liability can be accepted in the case of damage or loss caused by failing to comply with this condition.
11. The Pump must be correctly earthed and connected to a circuit with an integral RCD (safety switch) in the circuit breaker, in accordance with the Electrical Regulations or Standards that are applicable.
12. Pumps used in SUITABLE commercial or industrial applications are covered by a replacement warranty only, when proved to have a manufacturing defect that has caused the pump to fail. No warranty applies when used in unsuitable applications, which is defined by us, at our discretion.
13. RIGHT TO INSPECT: We reserve the right to inspect the product and installation, prior to accepting any warranty claim. We may inspect by use of drone technology, with property owners permission. We also reserve the right to request and require photographs or video evidence in lieu of physical inspection, at our sole discretion. Refusal of inspection cancels all warranty and liability.
14. This warranty does not exclude any non-excludable rights according to Australian Law. However any condition that is made void by Australian Law does not void the remaining conditions, which shall stand unaltered.
15. In the case of a fault, refer to the Trouble Shooting Guide first. If these steps do not rectify the problem, and the fault is due to a manufacturing defect or product failure not caused by improper installation, improper use or lack of maintenance, return the faulty appliance to the original place of purchase with proof of purchase for replacement or refund. Or mail us at PO BOX 650 MORNINGSIDE QLD 4170 or send an email to csv@ascento.com.au with copy of your purchase receipt, a description of the problem, and your name and address and phone number - we will review your request and send you a replacement directly if we accept your warranty claim. Or call us on 1800 807 604 with the above information; however we will always require a copy of your purchase receipt. If an exact replacement is not available, the closest equivalent product will be supplied at our discretion. Do not send the product to us unless we ask you to do so.