

I-NC3 20-60/150

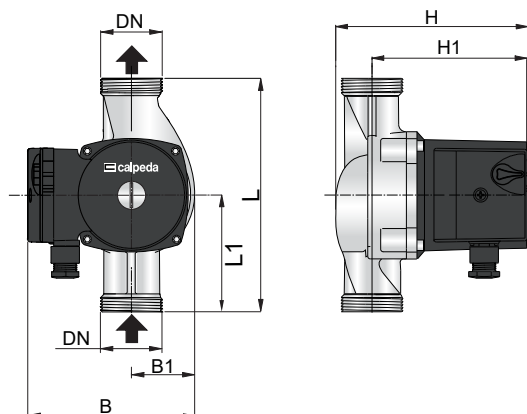


Stainless steel three speeds circulating pump with threaded ports



Materials

Component	Material
Pump casing	Cr-Ni steel 1.4301 EN 10088 (AISI 304)
Impeller	PES (Polyethersulfone)
Pump shaft	Ceramic



TYPE	DN	Pos.	P1 (W)	1x 240 V [A]	B	B1	H	H1	L	L1	[kg]
I-NC3 20-60/150	1 1/4"	1	46	0.22	132	49	135	105	150	65	2.6
		2	67	0.33							
		3	93	0.45							

Construction

This circulating pump features a shielded structure motor with wet rotor technology, ensuring quiet operation and leak-free performance. Constructed with high-quality components, including a ceramic shaft and bearing, stainless steel shielding sleeve, high-temperature-resistant plastic impeller, EPDM high-temperature gasket, and stainless steel rotor sleeve, it is built for durability.

Pump casing with suction and delivery connections with the same diameter and on the same axis (in-line).

Application

The pump is suitable for cold and hot clean water circulation systems.

Operating Conditions

Ambient Temperature: 0°C to +40°C

Medium Temperature:

- Normal Temperature: -10°C to +110°C

The ambient temperature should be lower than the liquid temperature to prevent condensation inside the motor.

Dry running must not exceed 10 seconds.

Motor

2-pole induction motor, 50 Hz.

Three adjustable speeds.

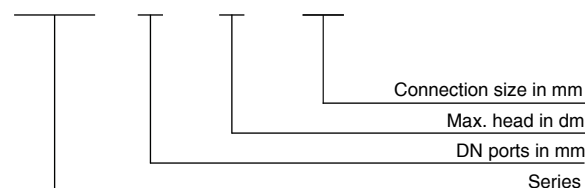
Single-phase 240 V.

Insulation class F.

Protection IP 44.

Designation

I-NC3 20 - 60 / 150



I-NC3 20-60/150



Stainless three speeds circulating pump with threaded ports

Technical:

Maximum Flow Rate: 3.3 m³/h
Maximum Head: 6 m
Rated Flow Rate: 2.3 m³/h

Installation:

Connection Type: Threaded
Pressure Level: 10 bar
Size of Suction Port: G 1 1/4
Size of Outlet Port: G 1 1/4

Material:

Pump Body: Stainless Steel
Impeller: PES

Environment:

Ambient Temperature: 40°C

Electrical Data:

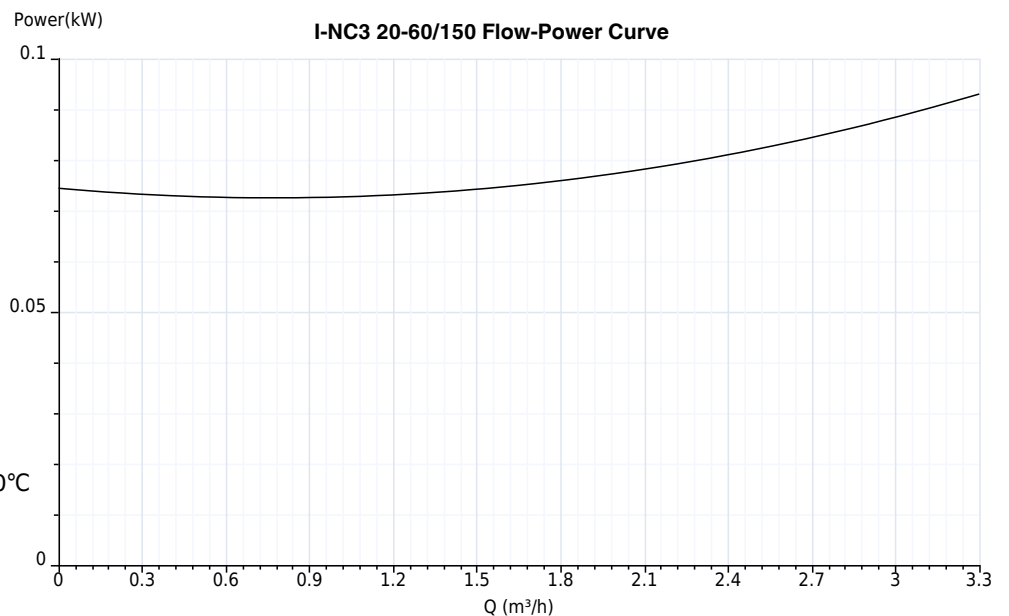
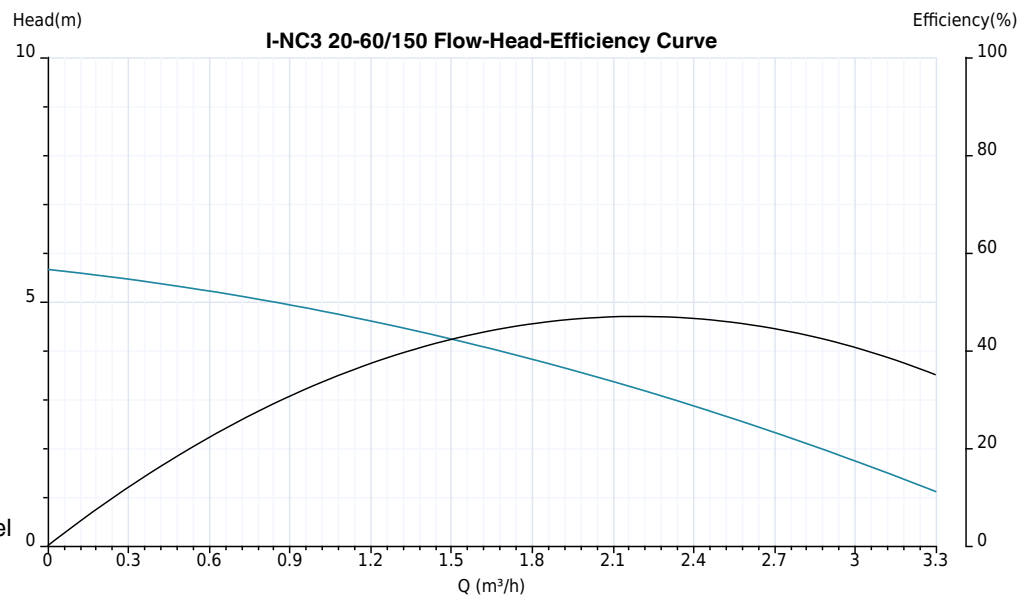
Motor Phase Number: 1
Protection Level: IP44
Insulation Level: F
Motor Power: 93 W
Power Frequency: 50 Hz
Rated Voltage: 240 V
Rated Current: 0.42 A

Liquid:

Pumped Liquid: Clean Water
Standard Temperature: -10°C to +110°C

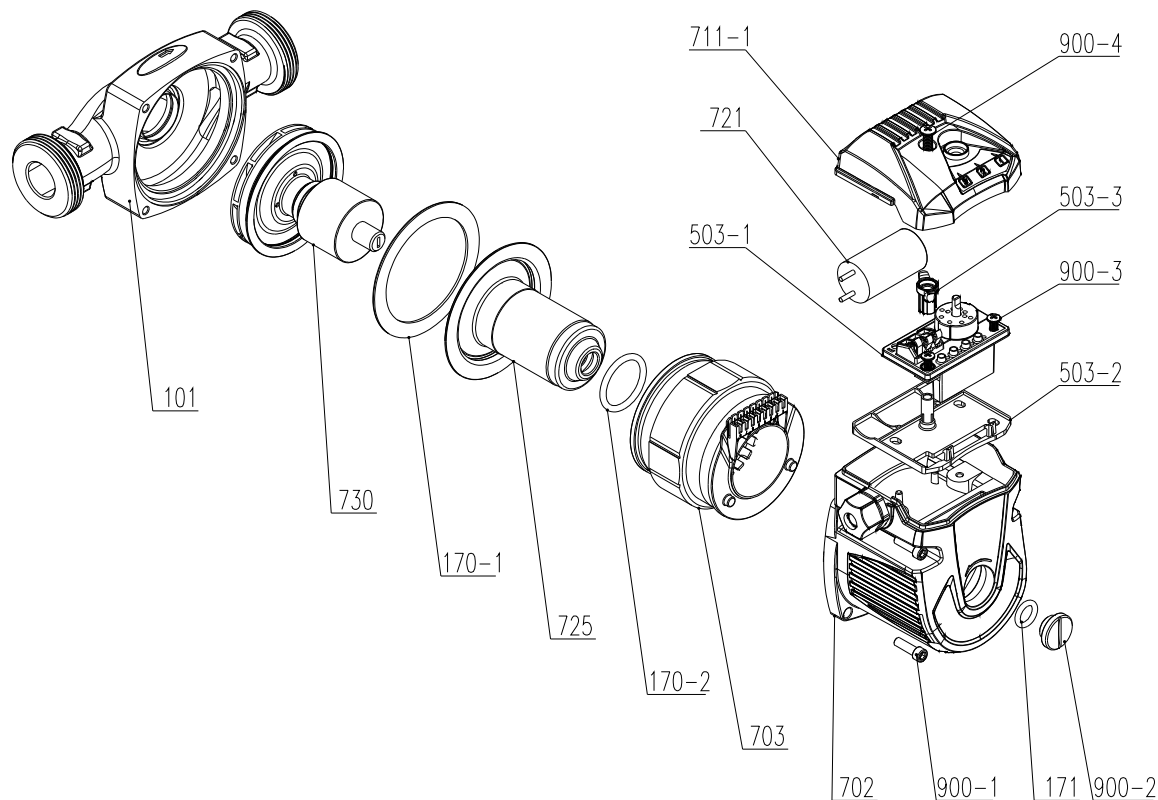
Other:

Weight: 2.6 Kg



I-NC3 20-60/150

Stainless three speeds circulating pump with threaded ports



Position Number	Position Description	Qty Per Pump	Position Number	Position Description	Qty Per Pump
101	Pump Body	1	900-2	Bleeder Plug	1
730	Rotor Assembly	1	503-2	Baseplate	1
170-1	Flat Sealing Washer	1	503-1	Terminal Blocks	1
725	Shield Sleeve	1	900-3	Cross Recessed Pan Head Screws	1
170-2	Sealing Washer	1	503-3	Support Rod	1
703	Stator	1	721	Capacitor	1
900-1	Hexagon Socket Head Cap Screws	1	711-1	Terminal Box Cover	1
702	Barrel	1	900-4	Cross Recessed Tapping Screws	1
171	O Ring	1			