

<b>Series:</b> <b>HSD</b>	<b>Discharge Bore:</b> <b>50mm</b>	<b>Motor Output / Pole:</b> <b>0.55kW / 2-pole</b>
------------------------------	---------------------------------------	---

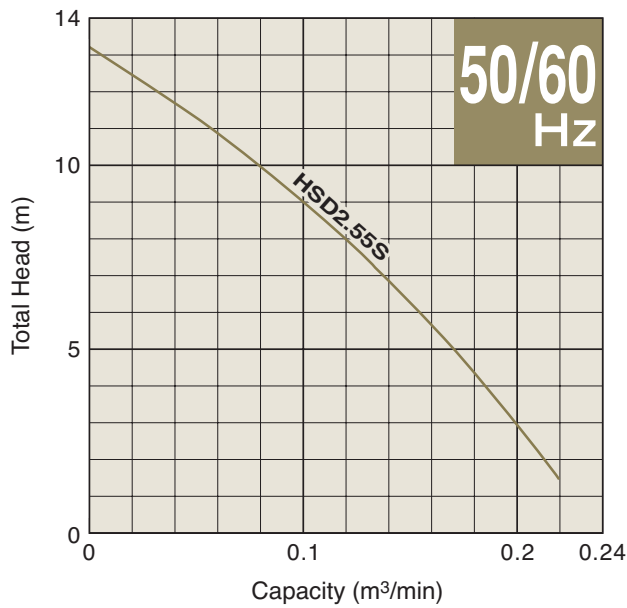


The HSD pump is a submersible single-phase portable slurry pump. It is equipped with a high-chromium cast iron agitator that assists smooth suction of the settled matters. Though the pump is a single-phase unit, it has the durability equivalent to three-phase slurry pumps, since the wear parts are made of abrasion-resistant materials. The pump adopts the side discharge, spiral design.

**Selection Table**

Model	Discharge Bore mm	Motor Output kW	Phase	Starting Method	Pole	Dry Weight kg
HSD2.55S	50	0.55	1-phase	Capacitor Run	2	14

**Performance Curve**



SPECIFICATIONS	Model	HSD2.55S									
		HSD-series									
		0.55kW, 1-phase									
<p><b>Type of Pump</b> Submersible slurry pump for construction and foundation works, mining, and quarries, etc.</p> <p><b>Type of Fluid</b> Water containing sand, mud, and slurry</p> <p>Temperature: 0 to 40°C</p> <p><b>Discharge Bore &amp; Connection</b> 50mm, Hose Coupling</p> <p><b>Motor Output</b> 0.55kW</p> <p><b>Power Supply</b> Single-phase</p> <p><b>Starting Method</b> Capacitor Run</p> <p><b>Motor</b> Continuous-duty rated, dry-type induction motor</p> <p>Insulation Class: E Degree of Protection: IP68</p> <p>No. of Poles &amp; Speed (Synchronous Speed) 2-pole, 3000/3600min<sup>-1</sup> (50/60Hz)</p> <p>Power Supply Voltages &amp; Rated Currents</p> <table border="0"> <tr> <td>50Hz</td> <td>60Hz</td> </tr> <tr> <td>220V – 3.5A</td> <td>110V – 7.5A</td> </tr> <tr> <td>230V – 3.3A</td> <td>220V – 3.7A</td> </tr> <tr> <td>240V – 3.2A</td> <td></td> </tr> </table> <p><b>Power Cable</b> Sheath: PVC Standard Length: 5m 100 to 240V supply: 1 x 3 x 1.25mm<sup>2</sup>, O.D. 10.1mm</p> <p><b>Dry Weight</b> (excluding cable) 14kg</p>	50Hz	60Hz	220V – 3.5A	110V – 7.5A	230V – 3.3A	220V – 3.7A	240V – 3.2A		<p><b>Impeller</b> Vortex impeller designed for “high-gap structure,” made of high-chromium cast iron</p> <p>Solids Passage 50Hz – <math>\phi</math>9mm 60Hz – <math>\phi</math>9mm</p> <p><b>Agitator</b> High-chromium cast iron</p> <p><b>Cable Entry with Anti-Wicking Block</b> Watertight cable entry with strain-relief device. The anti-wicking block prevents water incursion due to capillary action should the power cable be damaged or the end submerged.</p> <p><b>Bearing</b> Permanently lubricated, deep-groove, double-shielded C3 ball bearings</p> <p><b>Shaft</b> 403 stainless steel</p> <p><b>Shaft Seal (Mechanical Seal)</b> Furnished with a double-face mechanical seal located in oil chamber. Both upper and lower seal faces always run in a clean environment.</p> <p>Upper Seal Face: Ceramic + Carbon Lower Seal Face: SiC + Ceramic</p> <p><b>OIL LIFTER</b> Equipped in oil chamber. It forcibly supplies lubricating oil to the mechanical seal and continues to supply the oil to the upper seal faces even if lubricant falls below the rated volume.</p> <p>Type of Lubricating Oil &amp; Volume Turbine Oil (ISO VG32), 160ml</p> <p><b>Motor Protection Device</b> A circle thermal protector built in the motor housing. Directly cuts the motor circuit if excessive heat builds up or an overcurrent condition occurs in the motor.</p>		
50Hz	60Hz										
220V – 3.5A	110V – 7.5A										
230V – 3.3A	220V – 3.7A										
240V – 3.2A											
<p><b>Optional Accessory</b></p> <p><b>Male Threaded Coupling</b></p>											
<b>TSURUMI MANUFACTURING CO., LTD.</b>											

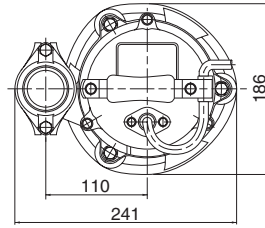
**DIMENSIONS**

**Model**

**HSD2.55S**

**HSD-series**

**50mm**



Unit: mm  
C. W. L. : Continuous Running Water Level

