

Qty. Description

1 **SEG.40.31.EX.2.50B**



Note! Product picture may differ from actual product

Product No.: On request

Non-self-priming, single-stage, centrifugal pump with horizontal discharge port, specifically designed for lift and pumping of wastewater containing discharge from toilets. The pump is equipped with a grinder system that grinds destructible solids into small pieces so that they can be led away through pipes of a relatively small diameter.

The surface of the pump is smooth to prevent dirt and impurities from sticking to the pump. A corrosion resistant stainless steel clamp is securing the motor to the pump housing and allow for ease of service of the pump.

For maintaining maximum pump efficiency during the pump life, a SmartTrim system allows easy adjustment of impeller clearance.

The pump is explosion-proof.

Controls:

Moisture sensor: without moisture sensors

AUTOADAPT: NO

Liquid:

Pumped liquid: Any Newtonian liquid

Liquid temperature range: 0 .. 40 °C

Density: 998.2 kg/m³

Technical:

Type of impeller: GRINDER SYSTEM

Primary shaft seal: SIC/SIC

Secondary shaft seal: CARBON/CERAMICS

Approvals on nameplate: PA-I, Class I / Zone 2

Curve tolerance: ISO9906:2012 3B2

Materials:

Pump housing: Cast iron
EN1561 EN-GJL-200

Impeller: Cast iron
EN1561 EN-GJL-200

Installation:

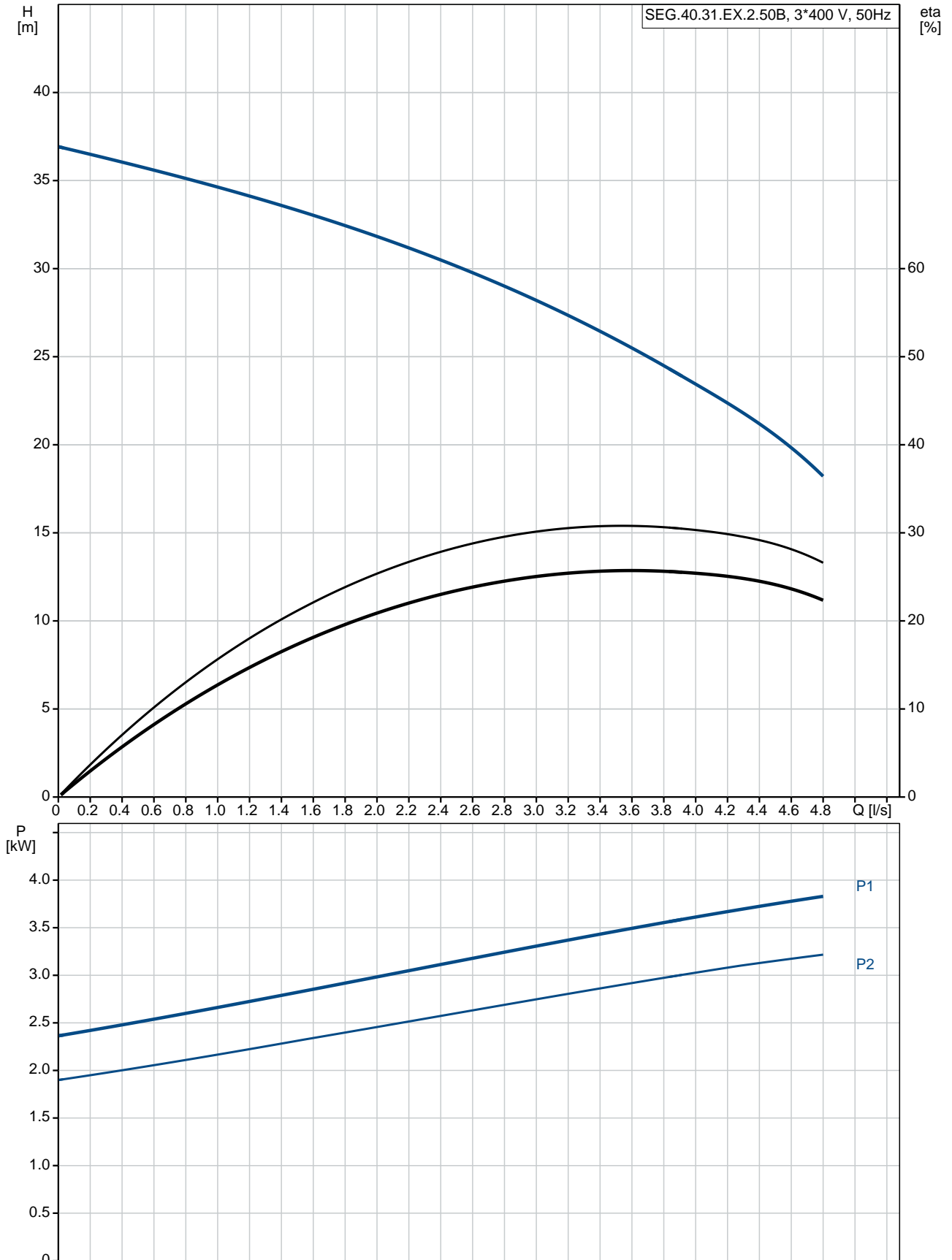
Maximum ambient temperature: 40 °C

Maximum operating pressure: 6 bar

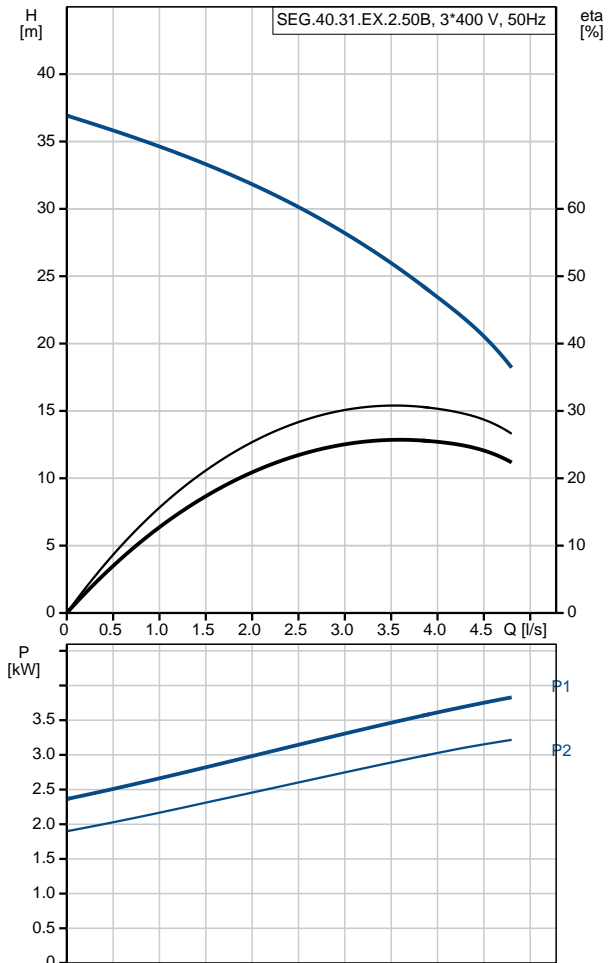
Flange standard: DIN

Qty.	Description
	Pipework connection: DN 40/50 Pump outlet: DN 40 Pressure rating: PN 10 Maximum installation depth: 10 m Auto-coupling: 96076063 Electrical data: Power input - P1: 3.7 kW Rated power - P2: 3.1 kW Mains frequency: 50 Hz Rated voltage: 3 x 400-415 V Voltage tolerance: +6/-10 % Max starts per. hour: 30 Rated current: 7 A Starting current: 43 A Rated current at no load: 3.1 A Cos phi - power factor: 0.86 Cos phi - p.f. at 3/4 load: 0.81 Cos phi - p.f. at 1/2 load: 0.71 Rated speed: 2900 rpm Moment of inertia: 0.01 kg m ² Motor efficiency at full load: 84 % Motor efficiency at 3/4 load: 82 % Motor efficiency at 1/2 load: 79 % Number of poles: 2 Start. method: direct-on-line Enclosure class (IEC 34-5): IP68 Insulation class (IEC 85): F Explosion proof: yes Ex-description: EX NC II T3 Explosion protection standard: IEC 60079-15:1987 Length of cable: 10 m Cable type: LYNIFLEX Type of cable plug: NO PLUG Others: Net weight: 75.6 kg

On request SEG.40.31.EX.2.50B 50 Hz



Description	Value
General information:	
Product name:	SEG.40.31.EX.2.50B
Product No:	On request
EAN number:	On request
Price:	
Technical:	
Maximum flow:	5 l/s
Max flow:	5 l/s
Head max:	37 m
Type of impeller:	GRINDER SYSTEM
Primary shaft seal:	SIC/SIC
Secondary shaft seal:	CARBON/CERAMICS
Approvals on nameplate:	PA-I, Class I / Zone 2
Curve tolerance:	ISO9906:2012 3B2
Materials:	
Pump housing:	Cast iron
Pump housing:	EN1561 EN-GJL-200
Impeller:	Cast iron
Impeller:	EN1561 EN-GJL-200
Installation:	
Maximum ambient temperature:	40 °C
Maximum operating pressure:	6 bar
Flange standard:	DIN
Pipework connection:	DN 40/50
Pump outlet:	DN 40
Pressure rating:	PN 10
Maximum installation depth:	10 m
Inst dry/wet:	SUBMERGED
Auto-coupling:	96076063
Liquid:	
Pumped liquid:	Any Newtonian liquid
Liquid temperature range:	0 .. 40 °C
Density:	998.2 kg/m ³
Electrical data:	
Power input - P1:	3.7 kW
Rated power - P2:	3.1 kW
Mains frequency:	50 Hz
Rated voltage:	3 x 400-415 V
Voltage tolerance:	+6/-10 %
Max starts per. hour:	30
Rated current:	7 A
Starting current:	43 A
Rated current at no load:	3.1 A
Cos phi - power factor:	0.86
Cos phi - p.f. at 3/4 load:	0.81
Cos phi - p.f. at 1/2 load:	0.71
Rated speed:	2900 rpm
Moment of inertia:	0.01 kg m ²
Motor efficiency at full load:	84 %
Motor efficiency at 3/4 load:	82 %
Motor efficiency at 1/2 load:	79 %
Number of poles:	2
Start. method:	direct-on-line
Enclosure class (IEC 34-5):	IP68
Insulation class (IEC 85):	F
Explosion proof:	yes
Ex-description:	EX NC II T3
Explosion protection standard:	IEC 60079-15 : 1987





Company name:

Created by:

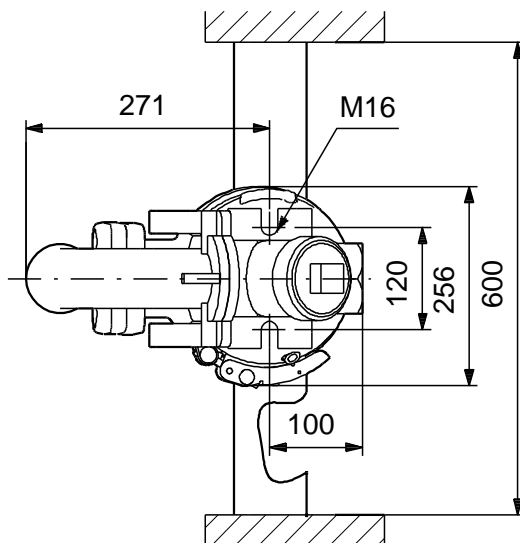
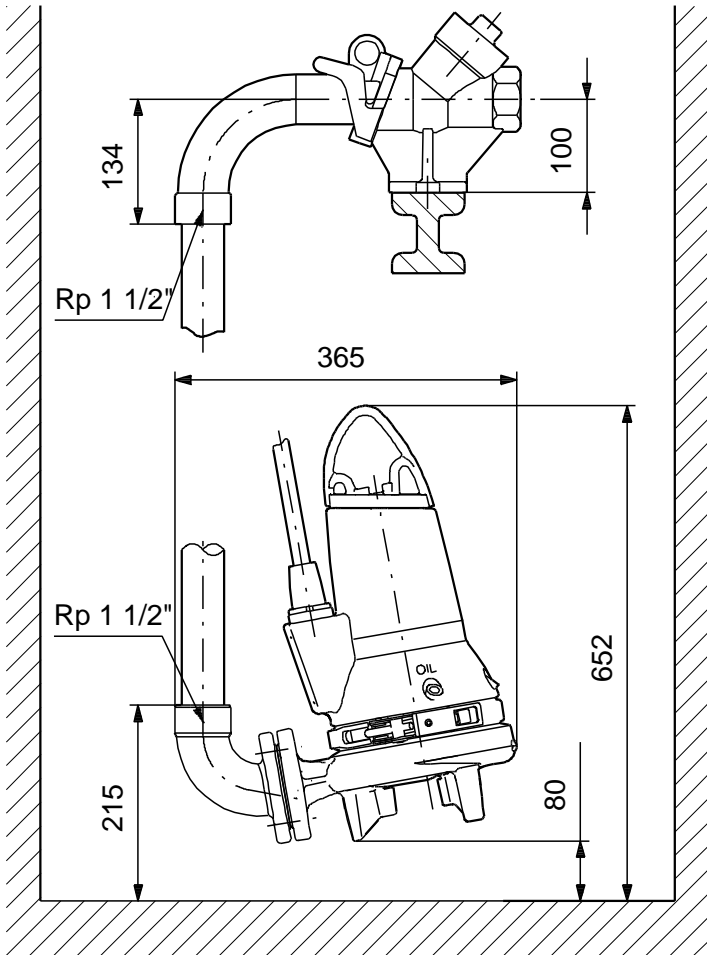
Phone:

Date:

14/09/2020

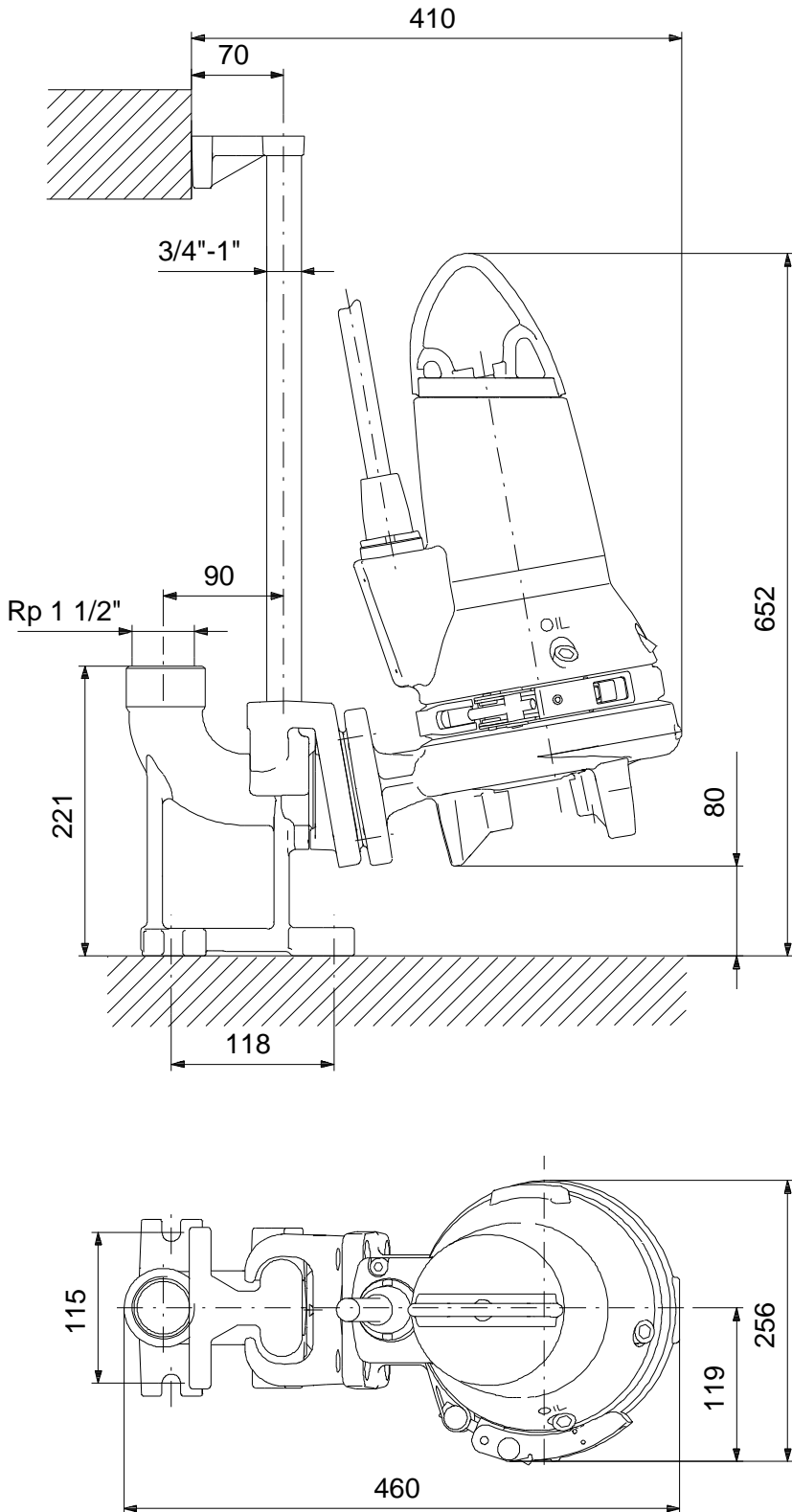
Description	Value
Motor protec:	THERMAL SWITCH
Thermal protec:	external
Length of cable:	10 m
Cable type:	LYNIFLEX
Type of cable plug:	NO PLUG
Controls:	
Control box:	not included
Additional I/O:	External
Moisture sensor:	without moisture sensors
AUTOADAPT:	NO
Others:	
Net weight:	75.6 kg
Sales region:	Australia

On request SEG.40.31.EX.2.50B 50 Hz



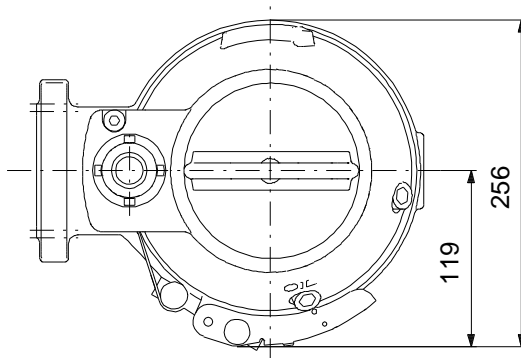
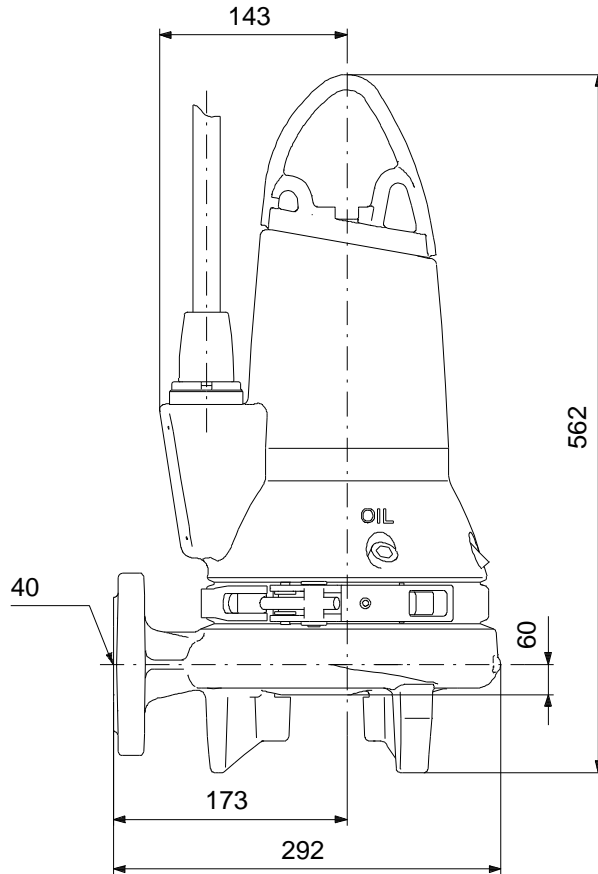
Note! All units are in [mm] unless others are stated.
Disclaimer: This simplified dimensional drawing does not show all details.

On request SEG.40.31.EX.2.50B 50 Hz



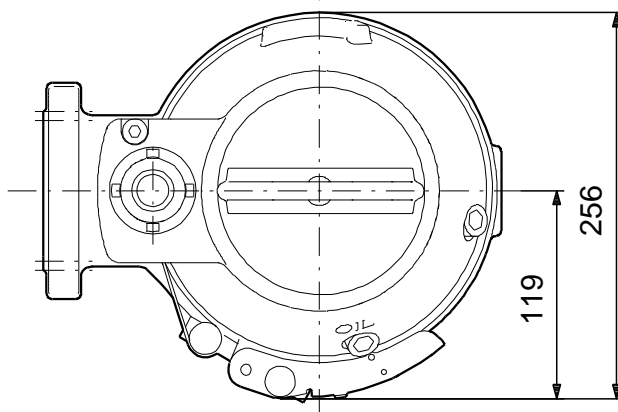
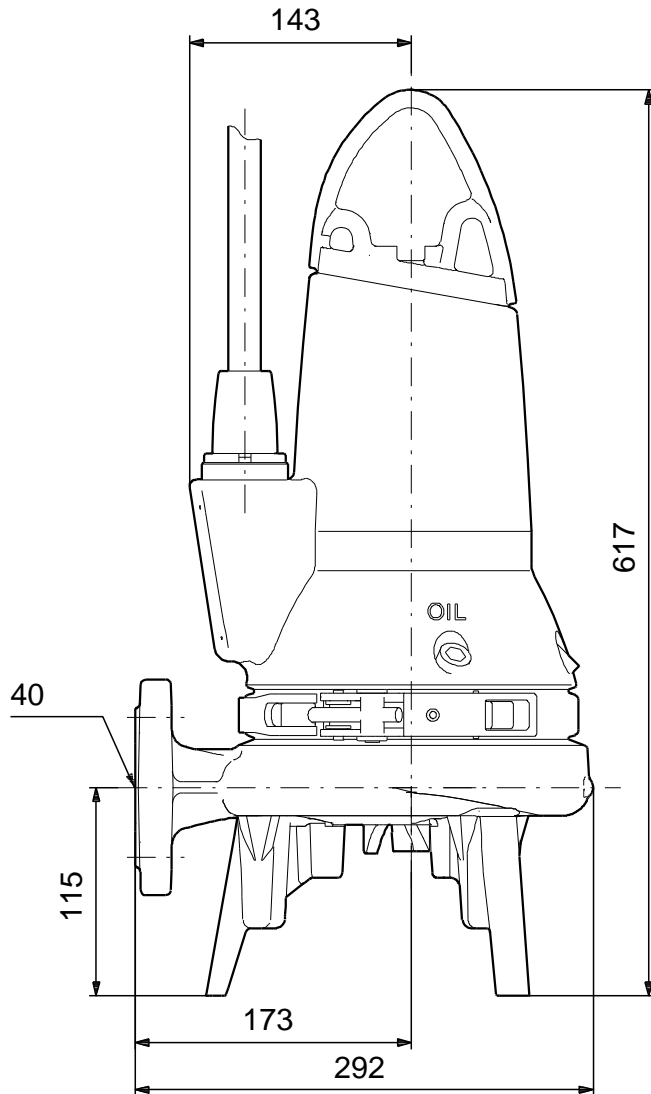
Note! All units are in [mm] unless others are stated.
Disclaimer: This simplified dimensional drawing does not show all details.

On request SEG.40.31.EX.2.50B 50 Hz



Note! All units are in [mm] unless others are stated.
Disclaimer: This simplified dimensional drawing does not show all details.

On request SEG.40.31.EX.2.50B 50 Hz



Note! All units are in [mm] unless others are stated.
Disclaimer: This simplified dimensional drawing does not show all details.