
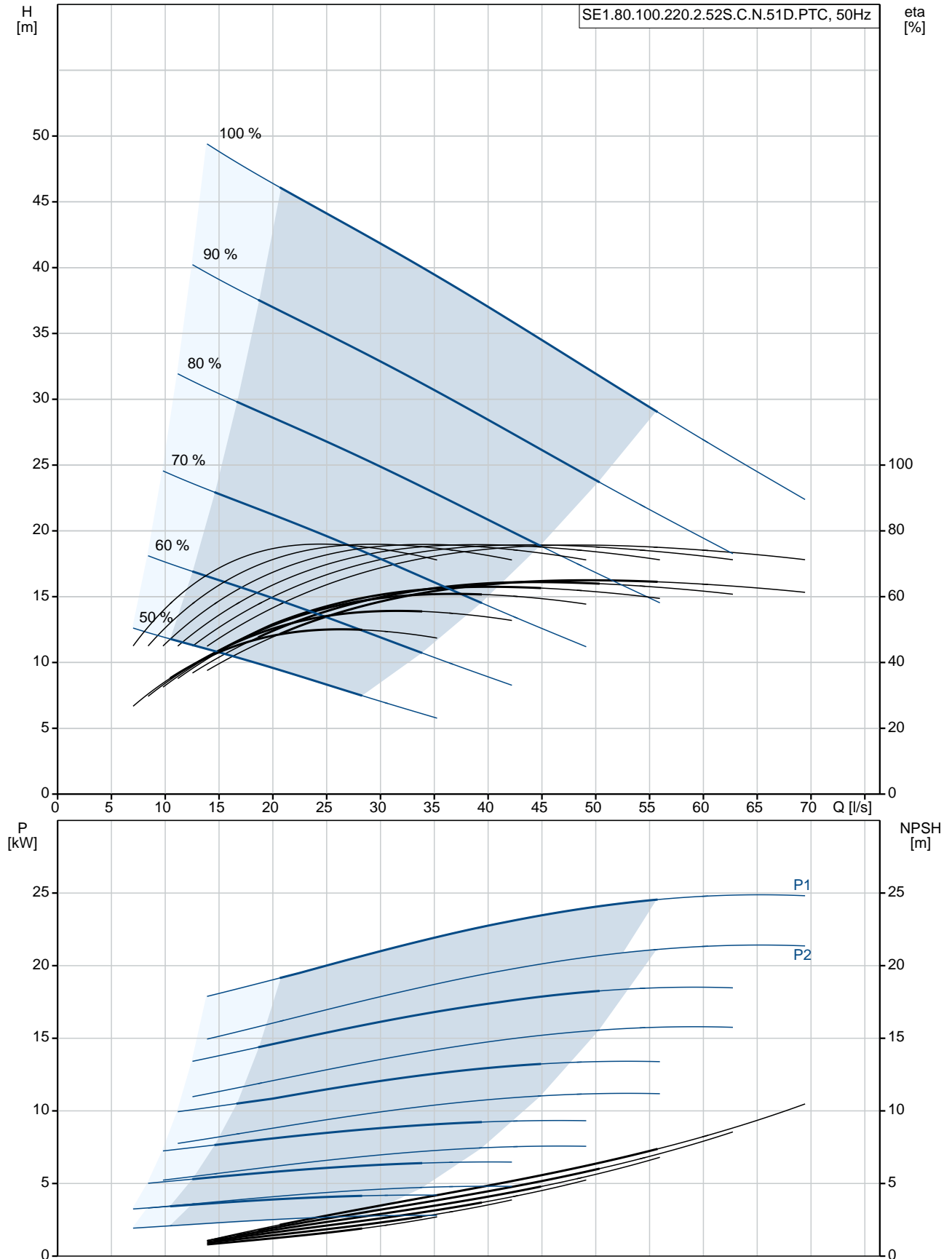


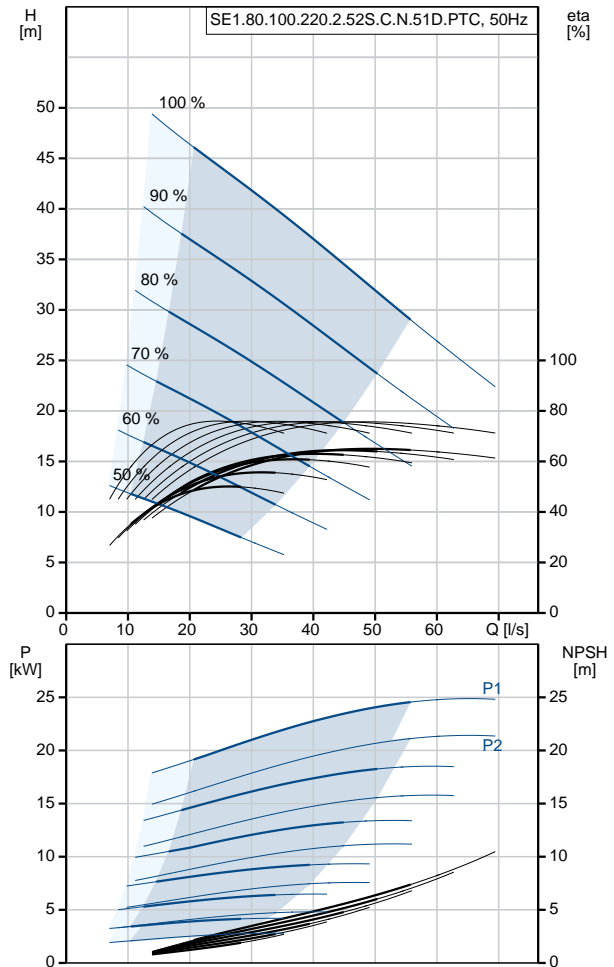
Position	Qty.	Description										
	1	<p data-bbox="320 338 730 365"><b>SE1.80.100.220.2.52S.C.N.51D.PTC</b></p> <div data-bbox="411 394 612 775" style="text-align: center;">  </div> <p data-bbox="711 770 1193 792" style="text-align: center;"><b>Note! Product picture may differ from actual product</b></p> <p data-bbox="320 801 600 828">Product No.: On request</p> <p data-bbox="320 864 1433 913">The SE1/SL1 pumps, 9 - 30 kW, are a range of pumps specifically designed for pumping sewage and wastewater in a wide range of municipal and industrial applications.</p> <p data-bbox="320 949 1433 999">The SE1/SL1 pump has a S-tube® impeller with 80 mm free passage and is designed for applications such as:</p> <ul data-bbox="320 1008 647 1299" style="list-style-type: none"> <li>• raw water intake</li> <li>• wastewater treatment plants</li> <li>• municipal pumping stations</li> <li>• public buildings</li> <li>• blocks of flats</li> <li>• industries</li> <li>• garages</li> <li>• underground car parks</li> <li>• car wash areas</li> <li>• restaurants and hotels.</li> </ul> <p data-bbox="320 1335 1433 1384">The pumps are suitable for both temporary and permanent installation. The lifting bracket fitted on the pumps facilitates easy transportation to as well as installation at the installation site.</p> <p data-bbox="320 1393 1394 1442">The pumps are made of resistant materials, such as cast iron and stainless steel. These materials ensure a proper operation.</p> <p data-bbox="320 1478 1449 1527">The pump is very service friendly with features like double shaft seal in the unique cartridge design and cable entry connector.</p> <p data-bbox="320 1536 1417 1585">The cartridge shaft seal allows change of shaft seal very quickly in the field without any special tools whereas the cable entry connector allow the cable to be dismantled without removing the motor top.</p> <p data-bbox="320 1594 1056 1621">These smartdesign features eliminates the risk of faulty installation.</p> <p data-bbox="320 1657 1011 1684">The pump comes with a high efficient Grundfos Blueflux motor.</p> <p data-bbox="320 1720 743 1747">The pump has DN 100 discharge port.</p> <p data-bbox="320 1756 1394 1818">The SL1 version is for submersible installation either free-standing or on an auto-coupling system whereas the SE1 pump can be used for dry-installation as either free-standing, on autocoupling or vertically/horizontally installed on baseplate.</p> <p data-bbox="320 1859 434 1886"><b>Controls:</b></p> <table data-bbox="320 1890 925 1944"> <tr> <td>Moisture sensor:</td> <td>with moisture sensors</td> </tr> <tr> <td>Water-in-air sensor:</td> <td>N</td> </tr> </table> <p data-bbox="320 1980 405 2007"><b>Liquid:</b></p> <table data-bbox="320 2011 919 2096"> <tr> <td>Pumped liquid:</td> <td>Any Newtonian liquid</td> </tr> <tr> <td>Liquid temperature range:</td> <td>0 .. 40 °C</td> </tr> <tr> <td>Density:</td> <td>998.2 kg/m<sup>3</sup></td> </tr> </table>	Moisture sensor:	with moisture sensors	Water-in-air sensor:	N	Pumped liquid:	Any Newtonian liquid	Liquid temperature range:	0 .. 40 °C	Density:	998.2 kg/m <sup>3</sup>
Moisture sensor:	with moisture sensors											
Water-in-air sensor:	N											
Pumped liquid:	Any Newtonian liquid											
Liquid temperature range:	0 .. 40 °C											
Density:	998.2 kg/m <sup>3</sup>											

Position	Qty.	Description
		<p><b>Technical:</b></p> <p>Type of impeller: S-TUBE            Maximum particle size: 80 mm            Primary shaft seal: SIC-SIC            Secondary shaft seal: SIC-CARBON            Curve tolerance: ISO9906:2012 3B</p> <p><b>Materials:</b></p> <p>Pump housing: Cast iron            EN 1561 EN-GJL-250</p> <p>Impeller: Cast iron            EN 1561 EN-GJL-250</p> <p>Motor: Cast iron            EN 1561 EN-GJL-250</p> <p><b>Installation:</b></p> <p>Maximum ambient temperature: 40 °C            Pump inlet: DN 100            Pump outlet: DN 100            Maximum installation depth: 20 m            Auto-coupling: 96090994            Inst vertical: 96308237            Base stand: 96102255            Frame range: 52</p> <p><b>Electrical data:</b></p> <p>Power input - P1: 25 kW            Rated power - P2: 22 kW            Mains frequency: 50 Hz            Rated voltage: 3 x 380-415/660-690 V            Voltage tolerance: +10/-10 %            Max starts per. hour: 20            Rated current: 43-40/25-24 A            Maximum current consumption: 41 A            Starting current: 388/213 A            Rated current at no load: 12.5 A            Rated speed: 2963 rpm            Motor efficiency at full load: 88 %            Motor efficiency at 3/4 load: 88 %            Motor efficiency at 1/2 load: 86 %            Number of poles: 2            Start. method: star/delta            Enclosure class (IEC 34-5): IP68            Insulation class (IEC 85): H            Explosion proof: no            Ex-protection standard: N            Length of cable: 15 m            Cable type: S1BN8-F            Winding resistance: 0,355 Ohm            Cos phi 1/1: 0,89            Cos phi 1/2: 0,81            Cos phi 3/4: 0,87</p> <p><b>Others:</b></p> <p>Net weight: 337 kg</p>

## On request SE1.80.100.220.2.52S.C.N.51D.PTC 50 Hz



Description	Value
<b>General information:</b>	
Product name:	SE1.80.100.220.2.52S.C.N.51D.PTC
Product No:	On request
EAN number:	On request
<b>Technical:</b>	
Max flow:	56.1 l/s
Head max:	46 m
Type of impeller:	S-TUBE
Maximum particle size:	80 mm
Primary shaft seal:	SIC-SIC
Secondary shaft seal:	SIC-CARBON
Curve tolerance:	ISO9906:2012 3B
Cooling jacket:	with cooling jacket
<b>Materials:</b>	
Pump housing:	Cast iron EN 1561 EN-GJL-250
Impeller:	Cast iron EN 1561 EN-GJL-250
Motor:	Cast iron EN 1561 EN-GJL-250
<b>Installation:</b>	
Maximum ambient temperature:	40 °C
Pump inlet:	DN 100
Pump outlet:	DN 100
Maximum installation depth:	20 m
Installation:	C
Inst dry/wet:	D/S
Installation:	vertical
Auto-coupling:	96090994
Inst vertical:	96308237
Base stand:	96102255
Frame range:	52
<b>Liquid:</b>	
Pumped liquid:	Any Newtonian liquid
Liquid temperature range:	0 .. 40 °C
Density:	998.2 kg/m <sup>3</sup>
<b>Electrical data:</b>	
Power input - P1:	25 kW
Rated power - P2:	22 kW
Mains frequency:	50 Hz
Rated voltage:	3 x 380-415/660-690 V
Voltage tolerance:	+10/-10 %
Max starts per. hour:	20
Rated current:	43-40/25-24 A
Maximum current consumption:	41 A
Starting current:	388/213 A
Rated current at no load:	12.5 A
Rated speed:	2963 rpm
Motor efficiency at full load:	88 %
Motor efficiency at 3/4 load:	88 %
Motor efficiency at 1/2 load:	86 %
Number of poles:	2
Start. method:	star/delta





Company name:

Created by:

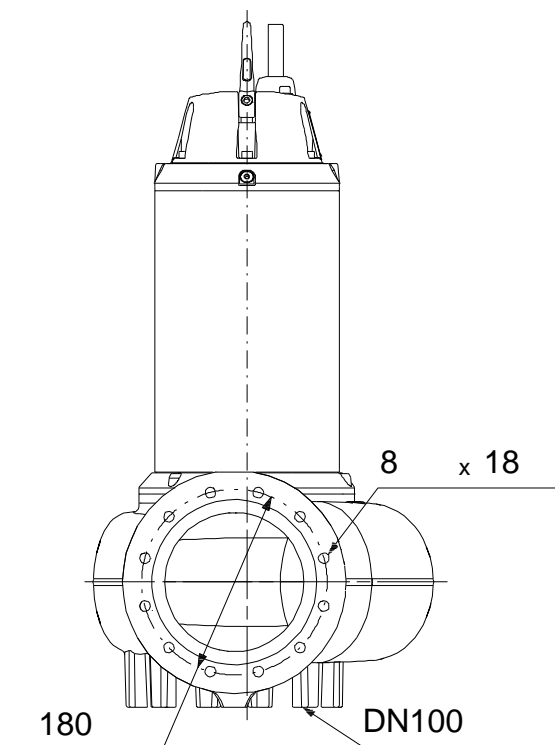
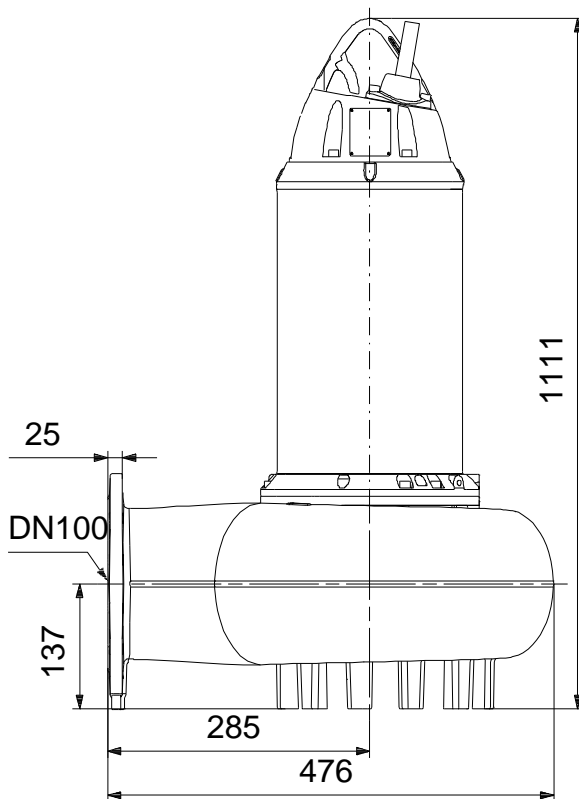
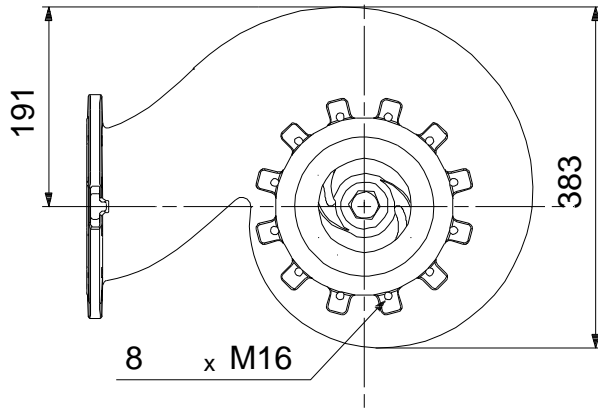
Phone:

Date:

17/10/2017

Description	Value
Enclosure class (IEC 34-5):	IP68
Insulation class (IEC 85):	H
Explosion proof:	no
Ex-protection standard:	N
Motor protec:	THERMISTOR
Length of cable:	15 m
Cable type:	S1BN8-F
Cable size:	7X4+ 5X1,5
Cable resistance:	4,95 mOhm/m
Winding resistance:	0,355 Ohm
Cos phi 1/1:	0,89
Cos phi 1/2:	0,81
Cos phi 3/4:	0,87
<b>Controls:</b>	
Moisture sensor:	with moisture sensors
Water-in-air sensor:	N
<b>Others:</b>	
Net weight:	337 kg
Sales region:	GPA

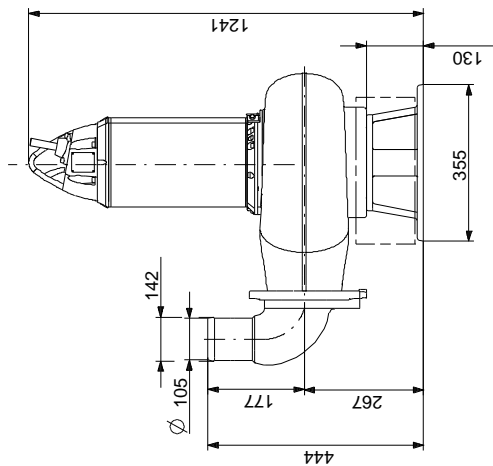
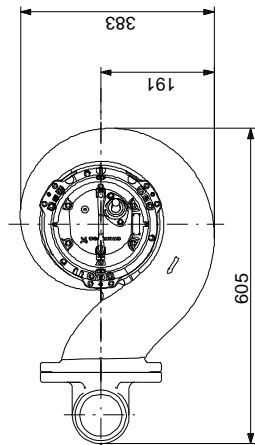
## On request SE1.80.100.220.2.52S.C.N.51D.PTC 50 Hz



Note! All units are in [mm] unless others are stated.  
Disclaimer: This simplified dimensional drawing does not show all details.



## On request SE1.80.100.220.2.52S.C.N.51D.PTC 50 Hz



Note! All units are in [mm] unless others are stated.  
Disclaimer: This simplified dimensional drawing does not show all details.

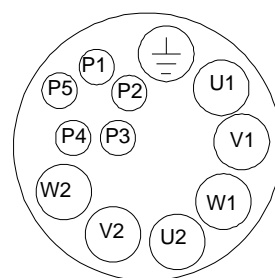
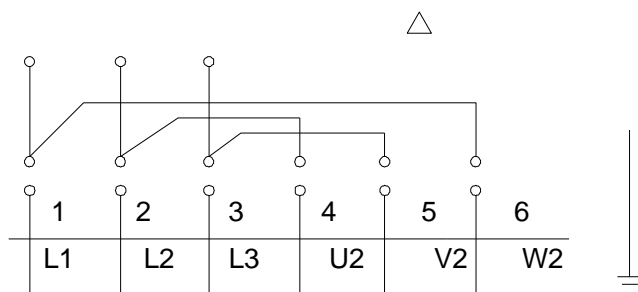




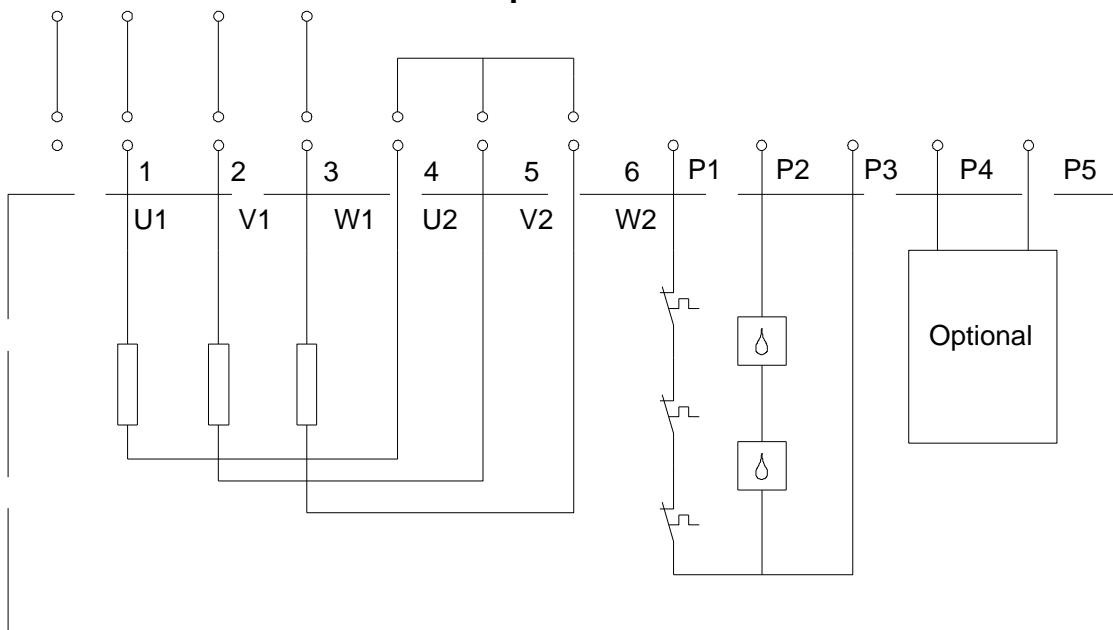
On request SE1.80.100.220.2.52S.C.N.51D.PTC 50 Hz

## Wiring diagram. 12-wire cable

L1 L2 L3 Delta



L1 L2 L3 Star  
Y



Note! All units are in [mm] unless others are stated.