

Technical specifications sheet

Part number **291252353020V**

Description **DPVF 125/2 B~DIN/ASME NW125~30kW 400/690V~50Hz 2P~IEC 200~IE3~Cartridge eCa eSic EPDM**

Vertical centrifugal pump, suction and discharge connections in-line.

Quotation details

Quotation number

Project

Position

Search criteria

Medium to be pumped
 Flow 22.00 l/sec
 Pressure 56.9 mwc

Hydraulic efficiency

Minimum efficiency index according: 80.60%
 Commission Regulation (EU) No 547/2012

Actual duty point

Flow 22 l/sec
 Pressure 56.9 mwc
 NPSH 2.5 m
 Efficiency 66.3 %
 Motor power 18.52 kW
 Frequency 50.0Hz

Connection base

Connection type Round flange
 DIN connection standard EN1092-2
 ASME connection standard ASME B16.1
 JIS connection standard ~
 DIN connection size NW125
 ASME connection size NPS 5
 JIS connection size ~
 DIN connection pressure class PN16
 ASME connection pressure class Class125
 JIS connection pressure class ~
 Material S/D casing AISI304
 Material flanges JS1030
 Material baseplate JS1030

Seal data

Shaft diameter ø25
 Seal diameter ø28
 Construction shaft seal Cartridge
 Seal code 35
 Shaft seal type RMG12-G606
 Material mechanical seal e-Carb e-Sic E GG WRAS
 Material shaft seal rotor eCa
 Material shaft seal stator eSic
 Material shaft seal elastomer EPDM
 Material pump elastomer EPDM
 Material seal cover AISI316
 Pressure class shaft seal PN25
 Temperature range shaft seal -20/+120°C

Basic hydraulic data

Maximum working pressure PN16+80°C
 Maximum liquid temperature 80°C+PN16
 Minimum liquid temperature -20°C
 Material hydraulic AISI304

Plug

Air relieve construction Vent. Plug
 Material plug AISI304

For details contact

DP Pumps
 52 Moss street
 Slacks Creek
 Australia

NL



Hydraulic performance sheet

Part number **291252353020V**

Description **DPVF 125/2 B~DIN/ASME NW125~30kW 400/690V~50Hz 2P~IEC 200~IE3~Cartridge eCa eSic EPDM**

Vertical centrifugal pump, suction and discharge connections in-line.

Search criteria

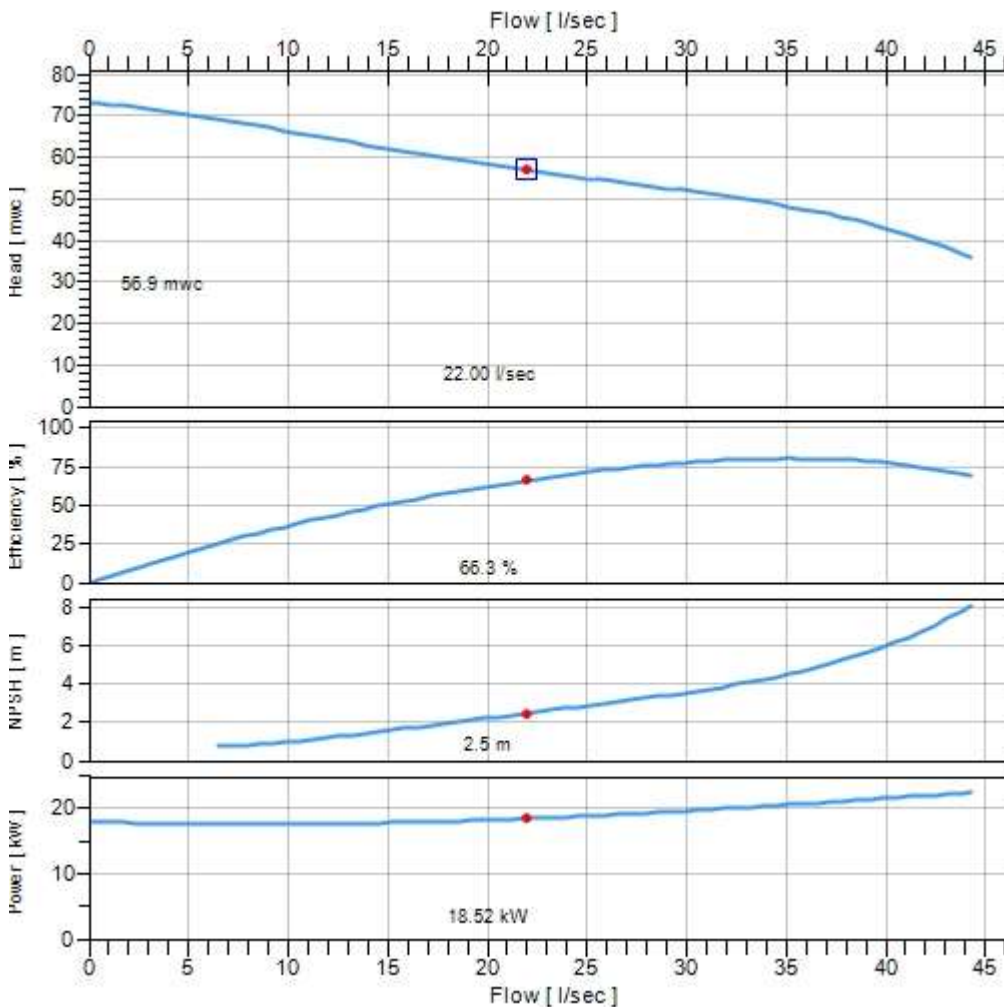
Medium to be pumped

Flow 22.00 l/sec
 Pressure 56.9 mwc

Actual duty point

Flow 22.00 l/sec
 Pressure 56.9 mwc
 Efficiency 66.3 %
 NPSH 2.5 m
 Power 18.52 kW
 Frequency 50.0Hz

The pump curve is shown at a fixed speed of 2900. The pump performance must be converted to the actual speed of the motor.



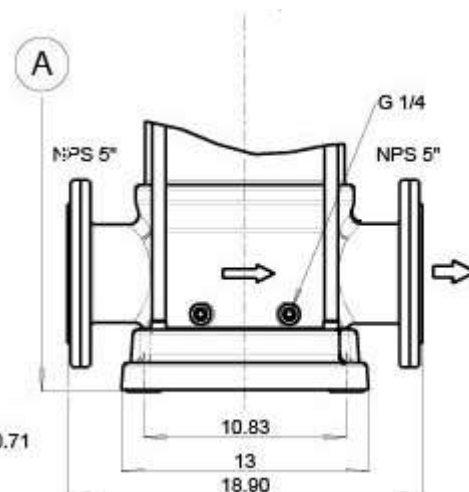
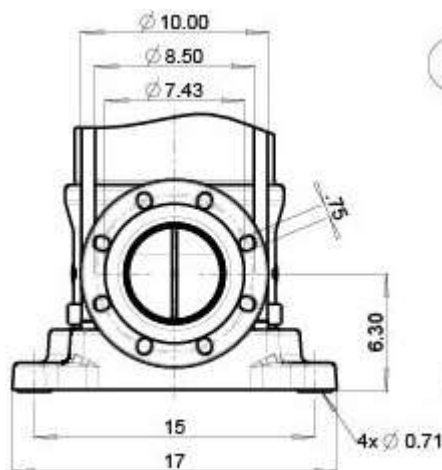
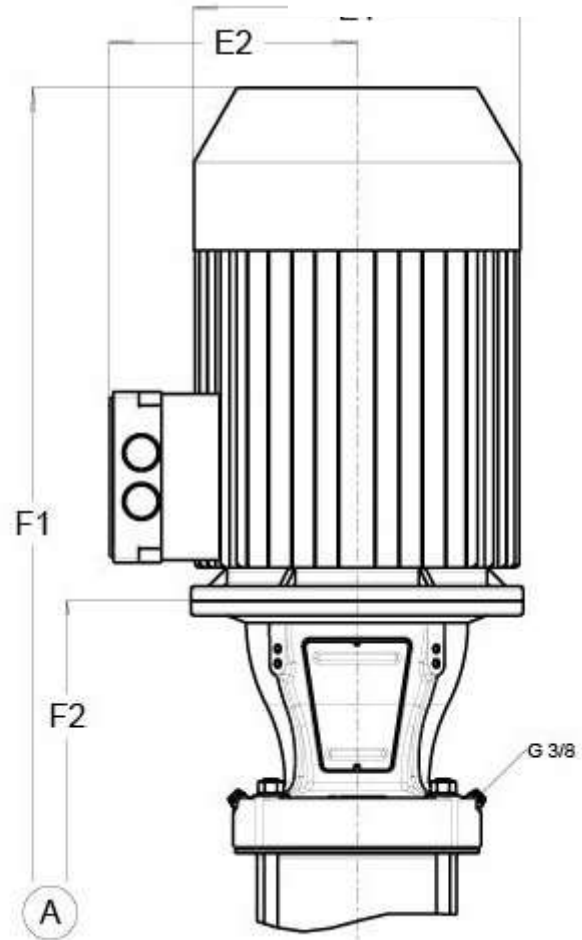
Duty point

- Actual
- Required

Part number **291252353020V**

Description **DPVF 125/2 B-DIN/ASME NW125~30kW 400/690V~50Hz 2P~IEC 200~IE3~Cartridge eCa eSic EPDM**

Vertical centrifugal pump, suction and discharge connections in-line.



Motor width (E1)	400mm
Motor width (E2)	340mm
Total height (F1)	1539mm
Total height (F2)	869mm
Total net weight	444.9kg

Motor specifications

Part number **3700152300**

Description **Motor DMW 30kW 400/690V 2P IE3 200 IP55 3xPTC Pos. 801**

Electric Data

Rated power output	30kW
Maximum power output	34.5kW
Rated voltage	400/690V
Phases	3ph
Frequency	50/60Hz
Voltage range	400/690V
Motor poles	2P
ATEX class	
Duty class	S1
Insulation class	F (rise-B)
Moment of inertia	0.199kgm ²
Motor standard	IEC
Capacitor	
Motor efficiency	93.3% (92.3/93.
Motor efficiency class	IE3

50Hz

Tolerance rated voltage	+10%/-10%
Rated speed	2965rpm
Starting current factor (Ia/In)	850%
Rated current (In)	51.6/29.9A
Maximum current (Imax)	59.3/34.4A
Rated Cos phi	0.9
Sound pressure	73dB
Rated nominal torque	96.6Nm
Rated starting torque	212.5Nm

60Hz

Tolerance rated voltage	+20%/-10%
Rated speed	3550rpm
Starting current factor (Ia/In)	770%
Rated current (In)	50.9/29.5A
Maximum current (Imax)	58.5/33.9A
Rated Cos phi	0.91
Sound pressure	76dB
Rated nominal torque	80.7Nm
Rated starting torque	137.2Nm

Motor protection

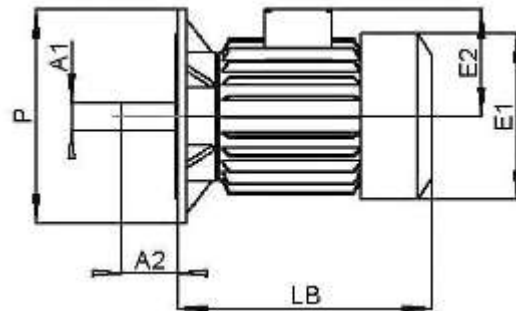
Motor protection class	IP55
Temperature sensor	3xPTC
Rain cover	
Anti condensation heater	

Mechanical data

Shaft execution	smooth shaft
Maximum starts per hour	15
Cable gland	2xM50x1.5
VFD allowance	VFD allowed 440/760V max

Dimensions

Diameter shaft A1	55mm
Length shaft A2	110mm
Diameter motor E1	400mm
Terminal box height E2	340mm
Diameter flange P	400mm
L. motor (without shaft) LB	670mm
Frame size	200
Motor construction type	IM V1
Motor face	IEC 60034-7 Form FF 350



Bearings / lubrication

Grease nipple	D-end
Bearing fixation pos	D-end
D-end bearing type	7312
Bearing grease	temp. -30°C/+130°C

Details

Motor label	DMW
Weight	250
Lifting lugs	Oncast
Motor finish	RAL5002
Rated max. amb. temp.	40°C
Material housing	