



## HOT WATER CIRCULATING PUMP



Operation and Maintenance Manual

### *C Series Single Phase Hot Water Circulator*



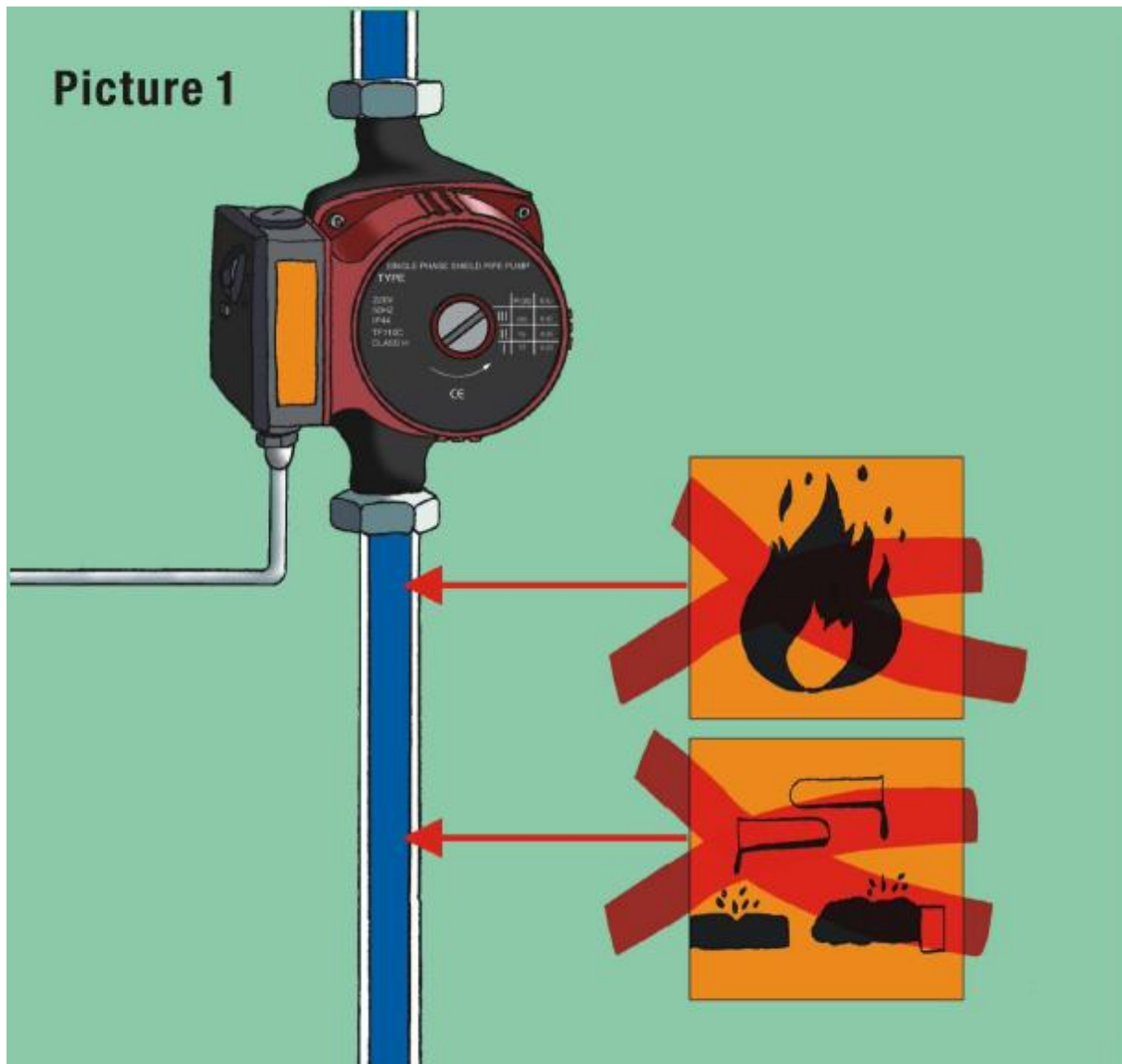
# Content

- 1、 *Conditions of operation* .....▶
- 2、 *Points for installation* .....▶
- 3、 *Maintenance and repair* .....▶

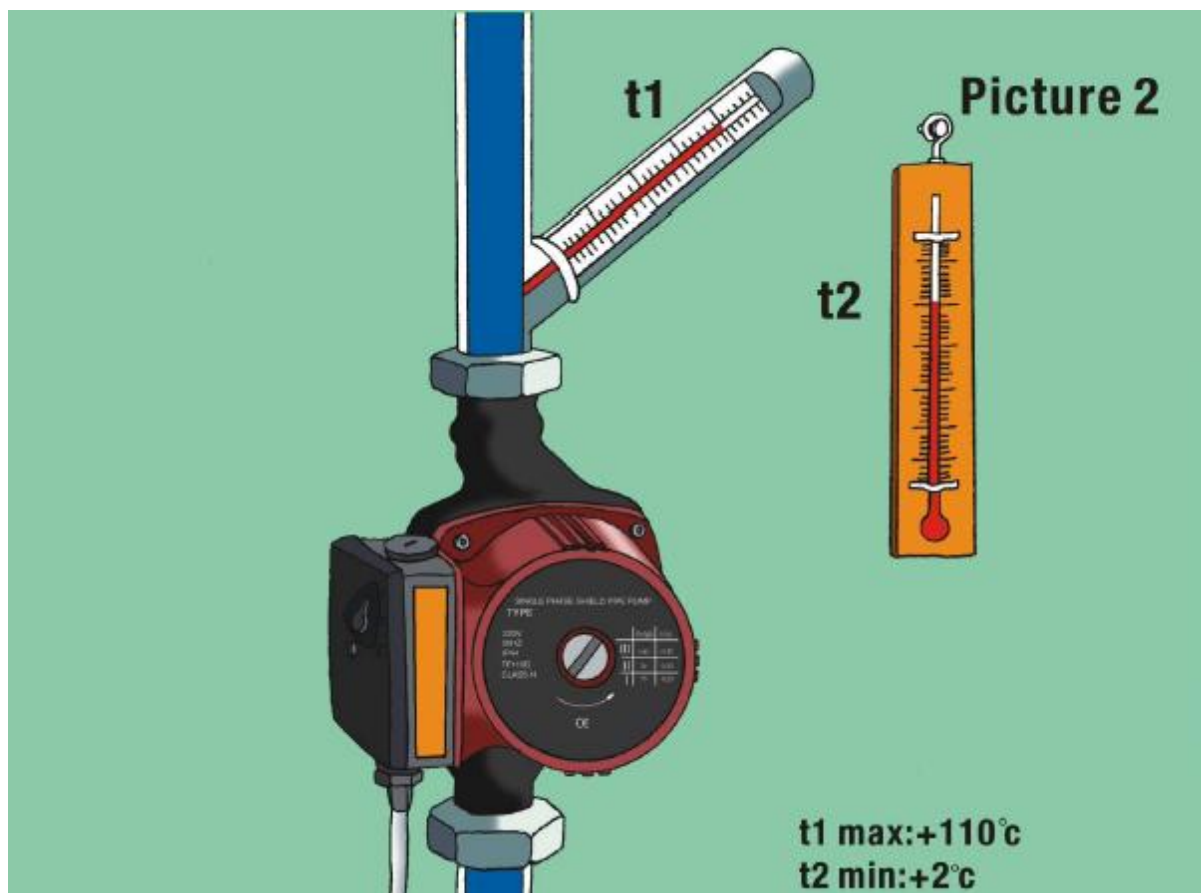
*The C Series Hot Water Circulator*

## 1. Conditions of operation

The pump bearing is lubricated by the pumped water. This pump cannot be run dry for periods exceeding 10 seconds. Do not pump any flammable or corrosive liquids.



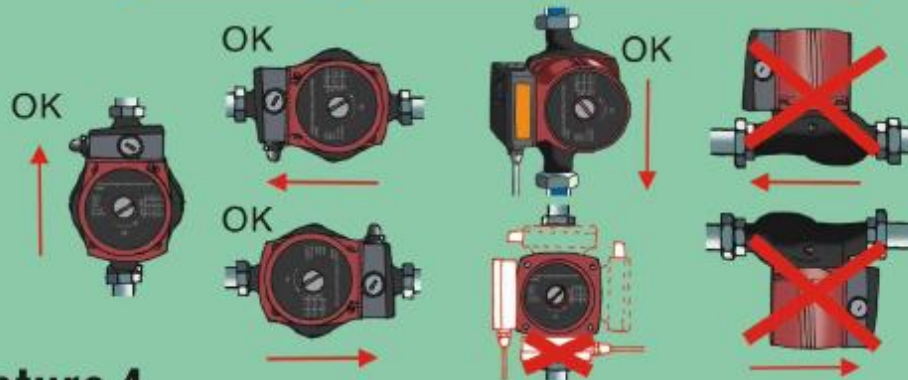
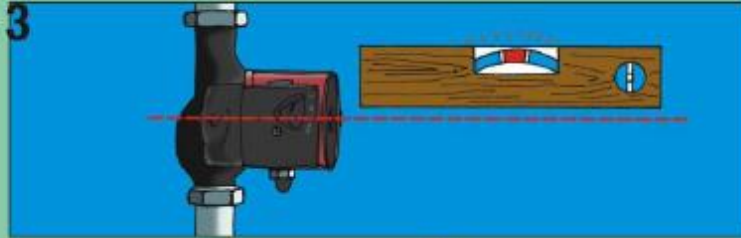
The temperature of the environment must be lower than that of the media.



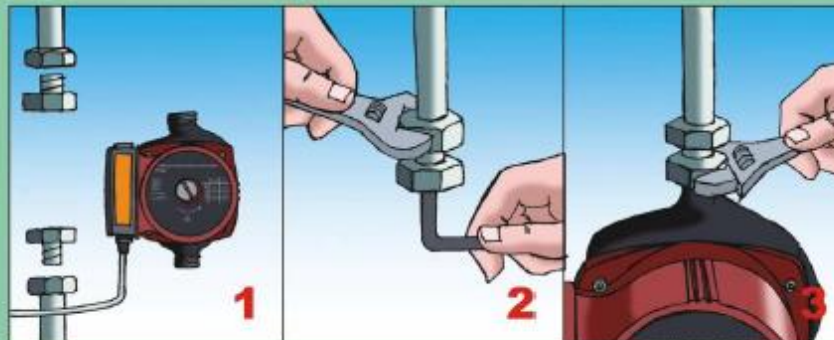
## 2. Installation

The pump must be installed horizontally.  
Pump must be installed as per procedures below (Picture 4)

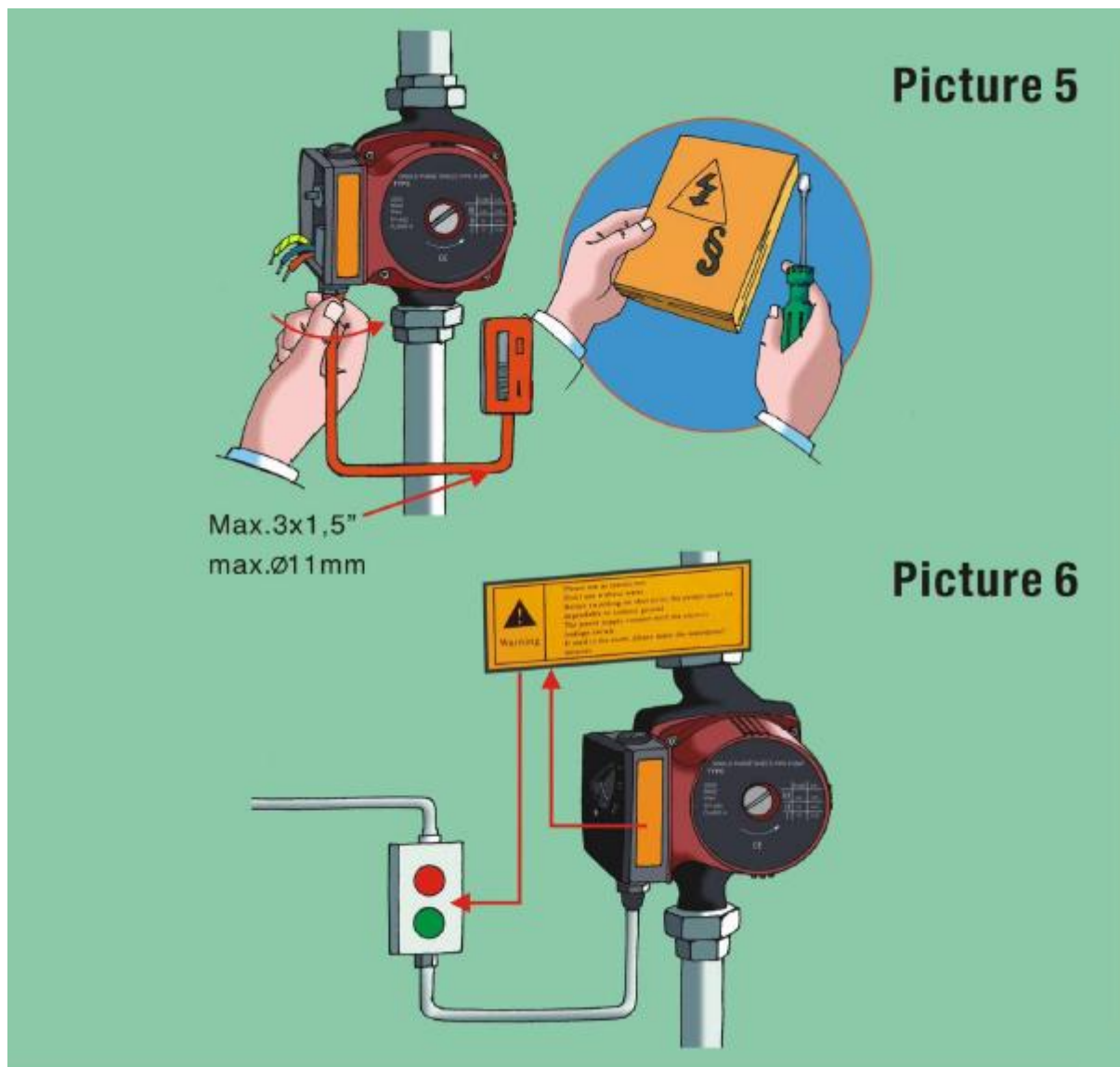
**Picture 3**



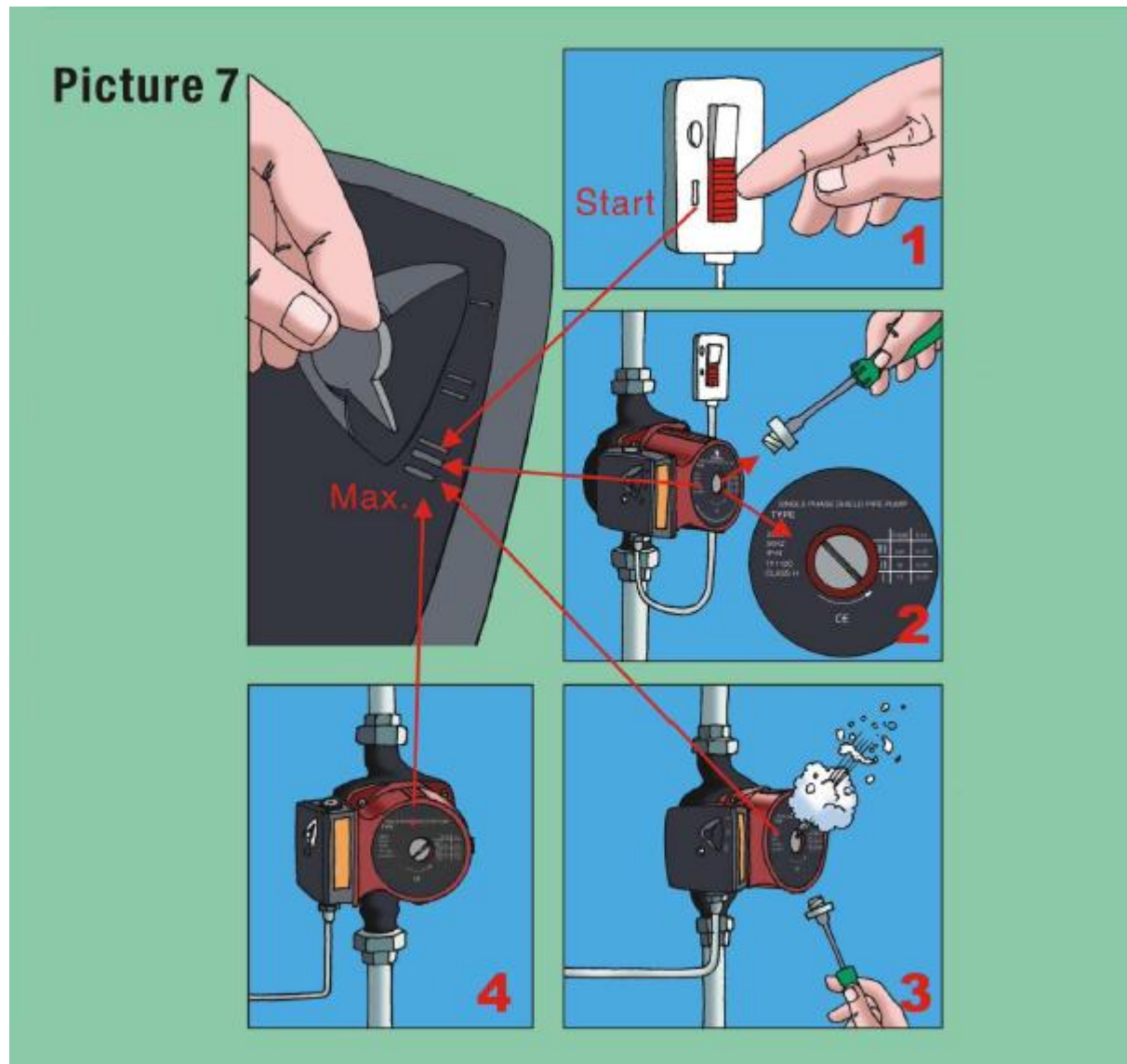
**Picture 4**



Only qualified and competent tradespeople should attempt installation or electrical work.  
Please read all instructions and warnings carefully before installation.



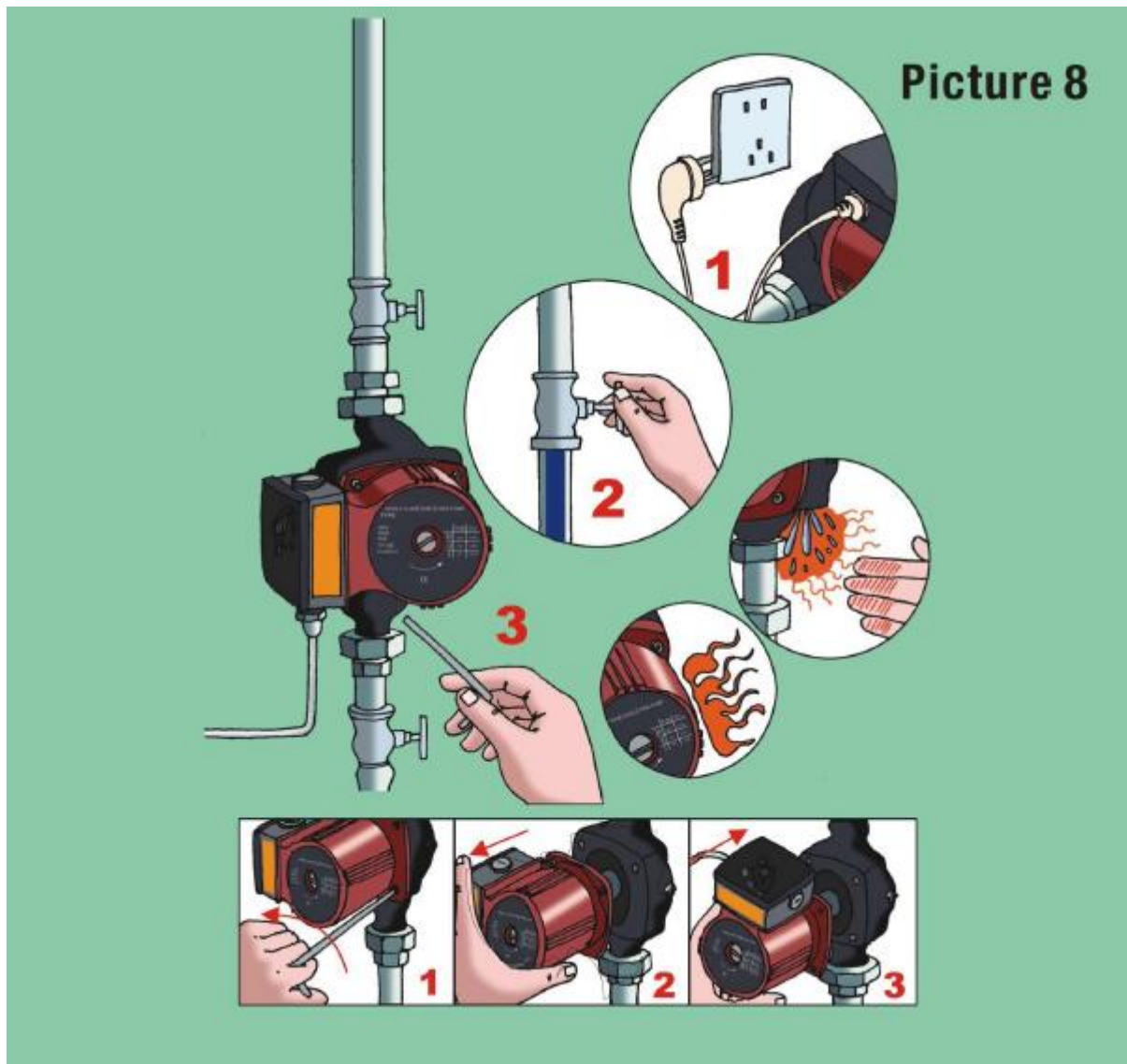
Once installed, bleed air prior to operation as shown in Picture 7





### 3. Maintenance and repair

Should the power cable need replacement, it must be replaced by a suitably qualified person.



Troubleshooting guide

<b>Fault</b>	<b>Possible Cause</b>	<b>Possible Solution</b>
<b>Pump not starting</b>	<b>Power is not connected correctly</b>	<b>Check fuse and electrical connection</b>
	<b>Faulty Capacitor</b>	<b>Replace Capacitor</b>
	<b>Bearing failure preventing pump from turning</b>	<b>Run at high speed for a short time or loosen rotor using a screwdriver at shaft end</b>
	<b>Blockage in pump due to dirty water</b>	<b>Disconnect the pump and clean</b>
<b>Noise in the system</b>	<b>Pump flow is too high</b>	<b>Change to a lower speed</b>
	<b>Air in the system</b>	<b>Bleed the air out of the system</b>
<b>Noise in the pump</b>	<b>Air in the pump</b>	<b>Bleed the air out of the pump</b>
	<b>Inlet pressure is too low</b>	<b>Increase the inlet pressure. Bleed any air out of the system</b>

# **CIRCULATING PUMP**

*C Series Single Phase  
Hot Water Circulator*





# 2 YEAR WARRANTY

## White International Pty Ltd Limited Product Warranties

### TERMS & CONDITIONS

This warranty is given in addition to the consumer guarantees found within the Australian Competition and Consumer Act 2010 (Cth) for goods purchased in Australia and the Consumer Guarantees Act 1993 NZ for goods purchased in New Zealand:

White International Pty Ltd / White International NZ Ltd (White International) warrant that all products distributed are free from defects in workmanship and materials, for their provided warranty period as indicated on the top or opposite side of this document. Subject to the conditions of the warranty, White International will repair any defective products free of charge at the premises of our authorised service agents throughout Australia and New Zealand if a defect in the product appears during the warranty period. If you believe that you have purchased a defective product and wish to make a claim under this warranty, contact us on our Sales Hotline on 1300 783 601, or send your claim to our postal address or fax line below and we will advise you as to how next to proceed. You will be required to supply a copy of your proof of purchase to make a claim under this warranty.

This warranty excludes transportation costs to and from White International or its appointed service agents and excludes defects due to non-compliance with installation instructions, neglect or misuse, inadequate protection against the elements, low voltage or use or operation for purposes other than those for which they were designed. For further information regarding the suitability of your intended application contact us on our Sales Hotline on 1300 783 601. If you make an invalid claim under this warranty, the original product will be sent back to you unrepai red.

This warranty refers only to products sold after the 1st January 2012, and is not transferable to another product type and only applies to the original owner, purchaser or end user, and is in addition to the consumer guarantees found within the Competition and Consumer Act 2010 (Cth) for goods purchased in Australia and the Consumer Guarantees Act 1993 (NZ) for goods purchased in New Zealand.

Our goods come with guarantees that cannot be excluded under the Australian Consumer Law. You are entitled to a replacement or refund for a major failure and for compensation for any other reasonably foreseeable loss or damage. You are also entitled to have the goods repaired or replaced if the goods fail to be of acceptable quality and the failure does not amount to a major failure.

To the fullest extent permitted by law, White International excludes its liability for all other conditions or warranties which would or might otherwise be implied at law. To the fullest extent permitted by law, White International's liability under this warranty and any other conditions, guarantees or warranties at law that cannot be excluded, including those in the Competition and Consumer Act 2010 (Cth), is expressly limited to:

in the case of products, the replacement of the product or the supply of equivalent product, the payment of the cost of replacing the product or of acquiring an equivalent product or the repair of the product or payment of the cost of having the product repaired, is at the discretion of White International or a 3<sup>rd</sup> party tribunal elected under the Competition and Consumer Act 2010 (Cth) for goods purchased in Australia and the Consumer Guarantees Act 1993 (NZ) for goods purchased in New Zealand; and

To the fullest extent permitted by law, this warranty supersedes all other warranties attached to the product or its packaging.

In the case of services, supplying the services again or the payment of the cost of having the services supplied again, is at the discretion of White International or a 3<sup>rd</sup> party tribunal elected under the Competition and Consumer At 2010 (Cth) for goods purchased in Australia and the Consumer Guarantees Act 1993 (NZ) for goods purchased in New Zealand.

Our warranty commences from the date of purchase of the above mentioned pumps. Proof of purchase is required before consideration under warranty is given. Record your date of purchase in the space below and retain this copy for your records.

Date of Purchase ..... Model Purchased .....



#### **WHITE INTERNATIONAL PTY LTD**

ABN 48 0001 19380  
52-60 Ashford Ave, MILPERRA NSW 2214  
PO BOX 304, MILPERRA LPO NSW 2214  
Ph: 02 9783 6000 Fax: 02 9783 6001  
Customer Service Hotline: 1300 783 601  
Customer Service Faxline: 02 9783 6003  
EMAIL: Sales Enquiries: [info@whiteint.com.au](mailto:info@whiteint.com.au)

#### **WHITE INTERNATIONAL NZ LTD**

15G Kerwyn Avenue, EAST TAMAKI, AUCKLAND, NZ  
PO BOX 12704, PENROSE, AUCKLAND  
Ph: 09 579 977 Fax: 09 579 7775  
Customer Service Hotline: 0800 509 506  
Customer Service Faxline: 0800 804 344  
EMAIL: General Info Enquiries: [sales@whiteint.co.nz](mailto:sales@whiteint.co.nz)