

**BIANCO
PUMPZ**

BIA-C1509-160 (803064)

HOT WATER BOOSTER PUMP

MANUAL



DISTRIBUTED BY:



**WHITE
INTERNATIONAL**



HOT WATER BOOSTER PUMP

INTRODUCTION

Thank you for your purchase of the Bianco Hot Water Booster Pump.

The Bianco BIA-C1509-160 is a domestic home booster pump designed for boosting pressure on potable water and domestic hot water. The pump provides additional pressure to showers, taps and similar outlet points.

The pump incorporates a flow switch which starts or stops the pump when a tap is turned on or off and is supplied with a 1.0 metre lead. This pump has 160mm port to port dimensions.

The Bianco C1509-160 is a small stainless steel booster pump, designed for water pressure boosting in domestic properties to provide additional pressure to hot and cold water taps and similar outlet points.

The pump incorporates a flow switch which starts and stops the pump according to flow when a tap is opened or closed.

This Bianco C1509-160 is not intended for use by young children or infirmed persons with reduced physical, sensory or reasoning capabilities, or lack of experience and knowledge, unless they have been given supervision or instruction by a responsible person concerning use of the appliance to ensure that they can use it safely.

Do not allow the Bianco C1509-160 to be used as a toy. Close attention is necessary when used by or near children. Children should be supervised to ensure that they do not play with the appliance.

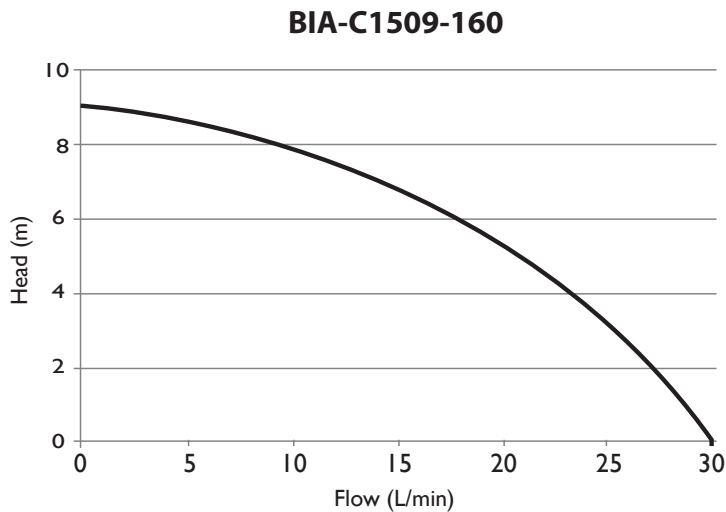
BIA-C1509-160

(803064)

PUMP SPECIFICATIONS

BIA-C1509-160	
Rated Flow (L/min)	9
Rated Head (m)	7.5
Power (W)	120
Current (A)	0.5
Voltage (V)	240
Power (Hz)	50
Weight (kg)	2.4
Union Joint	1/2" with unions
Fluid Temperature (°C)	+2 ~ +104

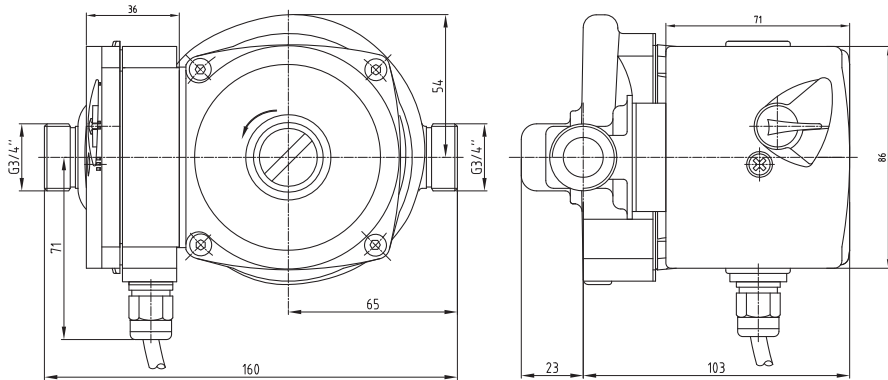
PUMP PERFORMANCE





HOT WATER BOOSTER PUMP

PUMP DIMENSIONS



BIA-C1509-160

(803064)

INSTALLATION

1. The top discharging point (tap or shower head) must be at least 1 metre below the water level in the tank.
2. Take care not to install any taps on the suction side. Accidentally opening taps on the suction side may cause backflow into the pump causing the pump to behave erratically.
3. Keep the inlet pressure no less than 0.01 MPa and no more than 0.6 MPa.
4. Install the pump indoors so it is protected from the elements.
5. Ensure that the pump is mounted horizontally in all 3 axis.
6. Ensure the pump has its own power supply.

Do not work on pump until power is unplugged.

Do not cut off ground pin or use an adapter fitting.

Do not use an extension cord.

Do not unplug by pulling on the cable. To unplug, grasp the plug, not the cable.

Do not handle any part of the plug or appliance with wet hands.

Do not use with a damaged cable or plug. If the supply cable is damaged it must be replaced by a service agent or similarly qualified person in order to avoid a hazard.

Do not allow the booster to run dry.

If the appliance is not working as it should, has received a sharp blow, has been dropped, damaged, left outdoors, or dropped into water, do not use and contact White International Customer Service for assistance.

1. Before installing or servicing this pump, ensure that the pump power source is disconnected.
2. Installation and electrical wiring must adhere to state and local codes and must be completed before priming pump.



HOT WATER BOOSTER PUMP

TROUBLESHOOTING CHECKLIST

PROBLEM	POSSIBLE CAUSES
Pump does not run and hums	<ul style="list-style-type: none"> • Ensure that there is adequate power to the circulator • There is a fault in the wiring or there is a loose wire. • Please ensure that the pump is mounted level in all 3 axis • Please ensure that the pump has its own dedicated power supply.
Pump runs but does not deliver water	<ul style="list-style-type: none"> • Ensure that check valves installed are installed in the right direction. • Pump impeller is clogged with particulates. Remove pump and clean • Pump is air locked. Start and stop pump several times to help remove the air. • The pump may be pumping further/higher than its capabilities. Reduce the pumping distance by shortening the pipework or reducing the vertical height. • Inlet holes in pump are blocked by particulates.
Pump runs but delivers only a small amount of water	<ul style="list-style-type: none"> • Pump impeller is clogged with particulates. Remove pump and clean • Pump is air locked. Start and stop pump several times to help remove the air. • The pump may be pumping further/higher than its capabilities. Reduce the pumping distance by shortening the pipework or reducing the vertical height. • Inlet holes in pump are blocked by particulates.
Pump trips circuit as soon as power turned on	<ul style="list-style-type: none"> • Ensure that pump is placed on its own power supply. • Ensure power source is OK. • Pump defective.
Pump runs for a short time and stops	<ul style="list-style-type: none"> • Pump inlet is clogged or partially clogged with particulates. Remove pump and clean. • Pump impeller is clogged or partially clogged with particulates and needs to be cleaned.

BIA-C1509-160

(803064)

2 YEAR WARRANTY

White International Pty Ltd
Limited Product Warranties
TERMS & CONDITIONS

This warranty is given in addition to the consumer guarantees found within the Australian Competition and Consumer Act 2010 (Cth) for goods purchased in Australia and the Consumer Guarantees Act 1993 NZ for goods purchased in New Zealand:

- 1) White International Pty Ltd / White International NZ Ltd (White International) warrant that all products distributed are free from defects in workmanship and materials, for their provided warranty period as indicated on the top or opposite side of this document. Subject to the conditions of the warranty, White International will repair any defective products free of charge at the premises of our authorised service agents throughout Australia and New Zealand if a defect in the product appears during the warranty period. If you believe that you have purchased a defective product and wish to make a claim under this warranty, contact us on our Sales Hotline on 1300 783 601, or send your claim to our postal address or fax line below and we will advise you as to how next to proceed. You will be required to supply a copy of your proof of purchase to make a claim under this warranty.
- 2) This warranty excludes transportation costs to and from White International or its appointed service agents and excludes defects due to non-compliance with installation instructions, neglect or misuse, inadequate protection against the elements, low voltage or use or operation for purposes other than those for which they were designed. For further information regarding the suitability of your intended application contact us on our Sales Hotline on 1300 783 601. If you make an invalid claim under this warranty, the original product will be sent back to you unrepairs.
- 3) This warranty refers only to products sold after the 1st January 2012, and is not transferable to another product type and only applies to the original owner, purchaser or end user, and is in addition to the consumer guarantees found within the Competition and Consumer Act 2010 (Cth) for goods purchased in Australia and the Consumer Guarantees Act 1993 (NZ) for goods purchased in New Zealand.
- 4) Our goods come with guarantees that cannot be excluded under the Australian Consumer Law. You are entitled to a replacement or refund for a major failure and for compensation for any other reasonably foreseeable loss or damage. You are also entitled to have the goods repaired or replaced if the goods fail to be of acceptable quality and the failure does not amount to a major failure.



HOT WATER BOOSTER PUMP

2 YEAR WARRANTY (cont.)

5) To the fullest extent permitted by law, White International excludes its liability for all other conditions or warranties which would or might otherwise be implied at law. To the fullest extent permitted by law, White International's liability under this warranty and any other conditions, guarantees or warranties at law that cannot be excluded, including those in the Competition and Consumer Act 2010 (Cth), is expressly limited to:

(a) in the case of products, the replacement of the product or the supply of equivalent product, the payment of the cost of replacing the product or of acquiring an equivalent product or the repair of the product or payment of the cost of having the product repaired, is at the discretion of White International or a 3rd party tribunal elected under the Competition and Consumer Act 2010 (Cth) for goods purchased in Australia and the Consumer Guarantees Act 1993 (NZ) for goods purchased in New Zealand; and
6) To the fullest extent permitted by law, this warranty supersedes all other warranties attached to the product or its packaging.

7) In the case of services, supplying the services again or the payment of the cost of having the services supplied again, is at the discretion of White International or a 3rd party tribunal elected under the Competition and Consumer Act 2010 (Cth) for goods purchased in Australia and the Consumer Guarantees Act 1993 (NZ) for goods purchased in New Zealand.

8) Our warranty commences from the date of purchase of the above mentioned pumps. Proof of purchase is required before consideration under warranty is given. Record your date of purchase in the space below and retain this copy for your records.

Date of Purchase

Model Purchased



WHITE
INTERNATIONAL

AUSTRALIA
PO BOX 304, MILPERRA LPO NSW 2214
www.whiteint.com.au
1300 783 601

NEW ZEALAND
PO BOX 12704 PENROSE AUCKLAND
www.whiteint.co.nz
0800 509 506