

Qty.	Description
------	-------------

1	APG.50.92.3
---	-------------



**Note! Product picture may differ from actual product**

Product No.: [96835731](#)

Submersible grinder pump

Vertical single-stage cast iron submersible pump

Phase: with integrated submersible 3-phase motor.

The pump is fitted with carrying handle and is

Cable length: supplied with a 10 m mains cable.

The pump is equipped with a hardened steel cutter system suitable for pumping wastewater and sewage in pressurised systems.

The pump has a double shaft seal and an intermediate oil chamber pre-filled with non-toxic special oil.

The motor is insulation class F and has long-life deep-groove greased-for-life ball bearings.

Pump outlet: The pump has DN 50 discharge port and is ready for installation on an auto-coupling system or can be supplied with ring stand for free-standing installation or portable use.

Liquid:

Pumped liquid: Any Newtonian liquid

Liquid temperature range: 0 .. 40 °C

Density: 998.2 kg/m³

Technical:

Type of impeller: CUTTER SYSTEM

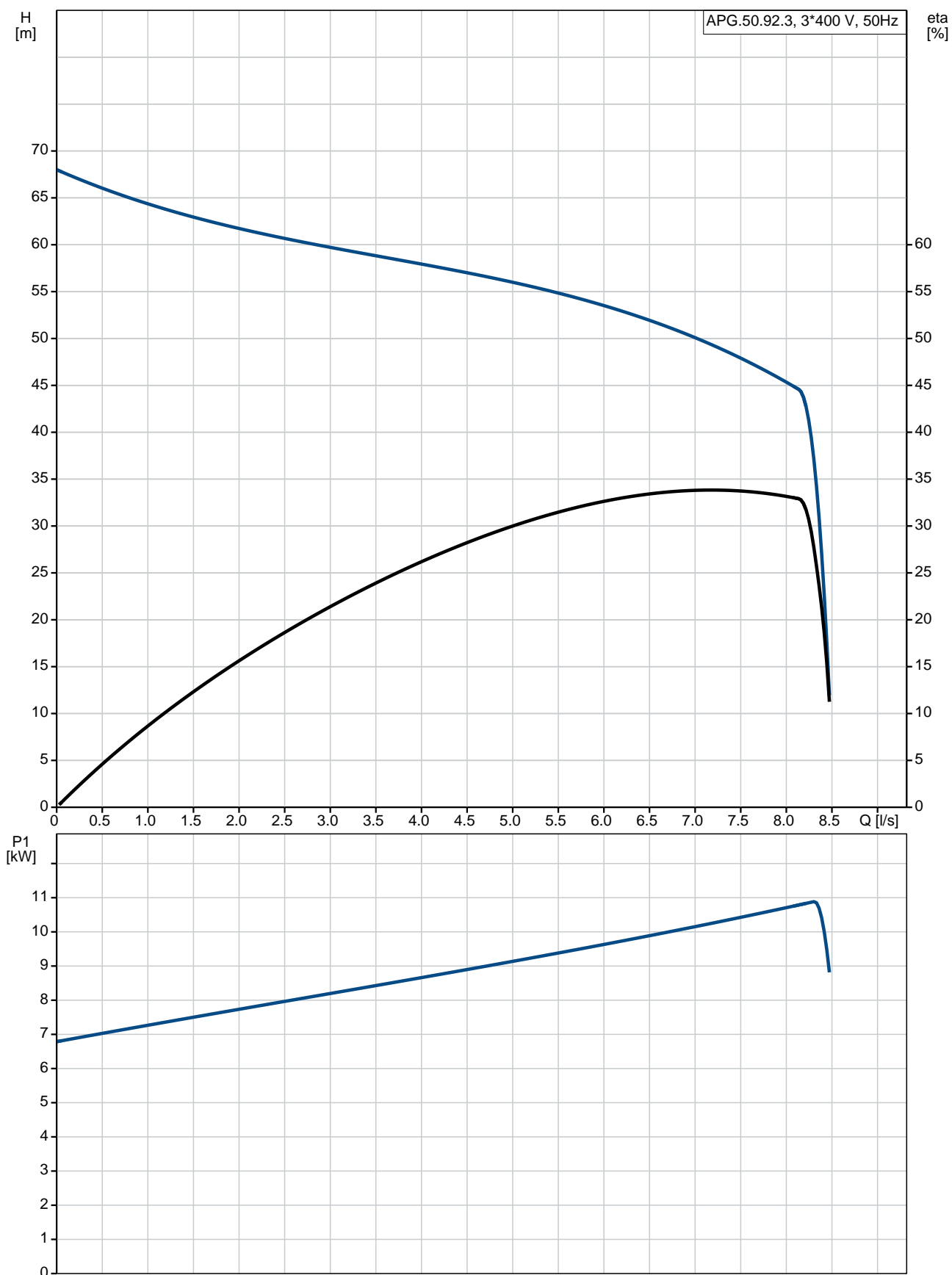
Curve tolerance: ISO9906:2012 3B

Materials:

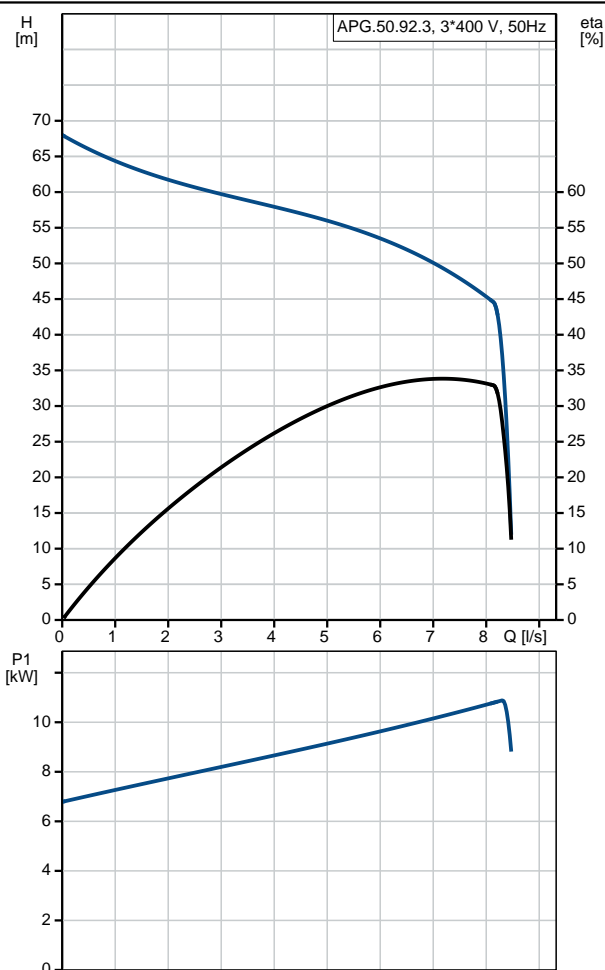
Pump housing: Cast iron

Qty.	Description
	<p>EN-JL1040 ASTM 35 B Cast iron EN-JL1040 ASTM 35 B</p> <p>Impeller:</p> <p>Installation:</p> <p>Pump outlet: DN 50</p> <p>Maximum installation depth: 10 m</p> <p>Electrical data:</p> <p>Power input - P1: 11 kW</p> <p>Mains frequency: 50 Hz</p> <p>Rated voltage: 3 x 400 V</p> <p>Rated current: 19.1 A</p> <p>Cos phi - power factor: 0.81</p> <p>Rated speed: 2900 rpm</p> <p>Enclosure class (IEC 34-5): IP68</p> <p>Insulation class (IEC 85): F</p> <p>Length of cable: 10 m</p> <p>Type of cable plug: NONE</p> <p>Others:</p> <p>Net weight: 116 kg</p> <p>Country of origin: DE</p> <p>Custom tariff no.: 84137090620208297</p>

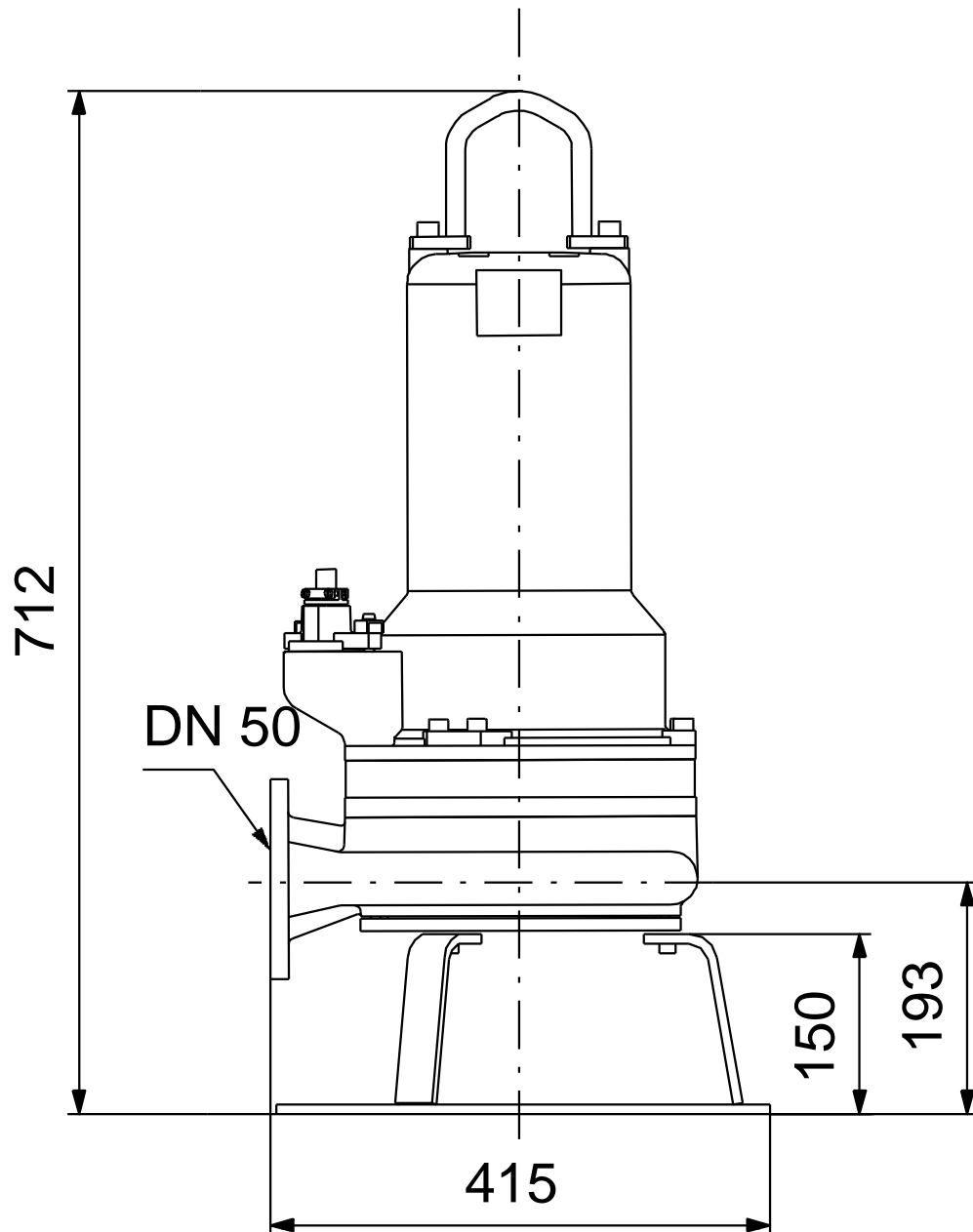
## 96835731 APG.50.92.3 50 Hz



Description	Value
<b>General information:</b>	
Product name:	APG.50.92.3
Product No:	96835731
EAN number:	5700311560532
Price:	AUD 10832
<b>Technical:</b>	
Maximum flow:	8.58 l/s
Max flow:	8.58 l/s
Head max:	68 m
Type of impeller:	CUTTER SYSTEM
Curve tolerance:	ISO9906:2012 3B
Model:	B
<b>Materials:</b>	
Pump housing:	Cast iron
Pump housing:	EN-JL1040
Pump housing:	ASTM 35 B
Impeller:	Cast iron
Impeller:	EN-JL1040
Impeller:	ASTM 35 B
<b>Installation:</b>	
Pump outlet:	DN 50
Maximum installation depth:	10 m
Inst dry/wet:	S
Installation:	vertical
<b>Liquid:</b>	
Pumped liquid:	Any Newtonian liquid
Liquid temperature range:	0 .. 40 °C
Density:	998.2 kg/m <sup>3</sup>
<b>Electrical data:</b>	
Power input - P1:	11 kW
P2:	9.2 kW
Mains frequency:	50 Hz
Rated voltage:	3 x 400 V
Rated current:	19.1 A
Cos phi - power factor:	0.81
Rated speed:	2900 rpm
Enclosure class (IEC 34-5):	IP68
Insulation class (IEC 85):	F
Motor protec:	CONTACT
Thermal protec:	external
Length of cable:	10 m
Type of cable plug:	NONE
<b>Controls:</b>	
Control box:	not included
<b>Others:</b>	
Net weight:	116 kg
Country of origin:	DE
Custom tariff no.:	84137090620208297

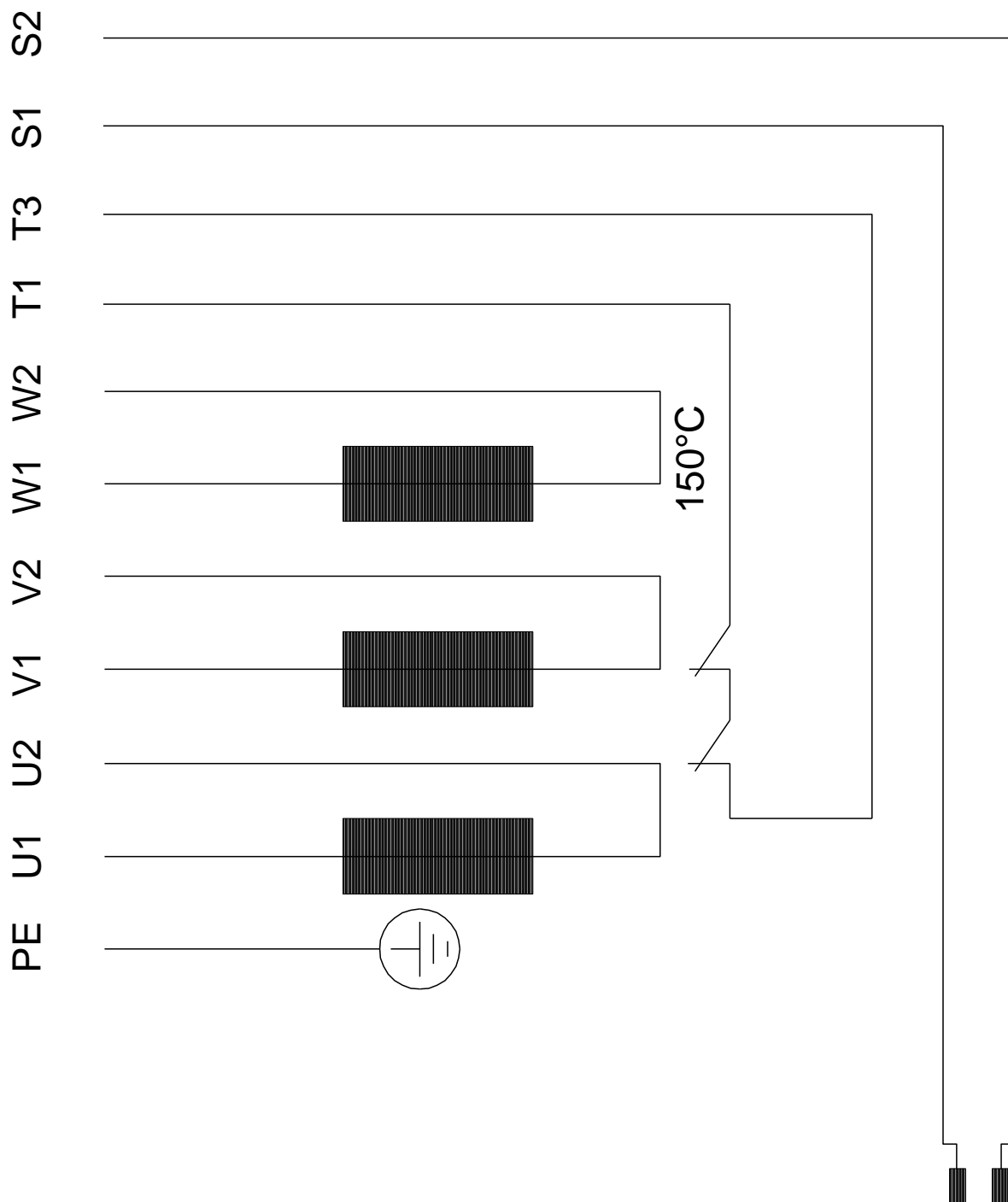


**96835731 APG.50.92.3 50 Hz**



Note! All units are in [mm] unless others are stated.  
Disclaimer: This simplified dimensional drawing does not show all details.

96835731 APG.50.92.3 50 Hz



Note! All units are in [mm] unless others are stated.