



**Qty. Description**

1 SE1.75.100.185.2.52S.C.N.51D.A.T



**Note!** Product picture may differ from actual product

Product No.: On request

Non-self-priming, single-stage, centrifugal pump designed for handling wastewater, process water and unscreened raw sewage.

The pump is designed for intermittent and continuous operation. The cooling jacket ensures that the pump can operate submerged or dry installed. The revolutionary S-tube® impeller provides free spherical passage of solids up to 75 mm and suitable for wastewater with a dry matter content of up to 3 %.

A SmartTrim impeller clearance adjustment system makes it possible to maintain maximum performance. For installation on auto coupling, the Grundfos SmartSeal gasket system provides a leak-proof connection. The pump comes with a high efficient Grundfos motor built on IE3 motor components.

Controls:

Moisture sensor: with moisture sensors

Liquid:

Pumped liquid: Any Newtonian liquid

Liquid temperature range: 0 .. 40 °C

Density: 998.2 kg/m<sup>3</sup>

Technical:

Type of impeller: S-TUBE

Maximum particle size: 75 mm

Primary shaft seal: SIC-SIC

Curve tolerance: ISO9906:2012 3B

Materials:

Pump housing: Cast iron  
EN 1561 EN-GJL-250

Impeller: Cast iron  
EN 1561 EN-GJL-250

Motor: Cast iron  
EN 1561 EN-GJL-250

Installation:

Maximum ambient temperature: 40 °C

Flange standard: DIN

Pump inlet: DN 100

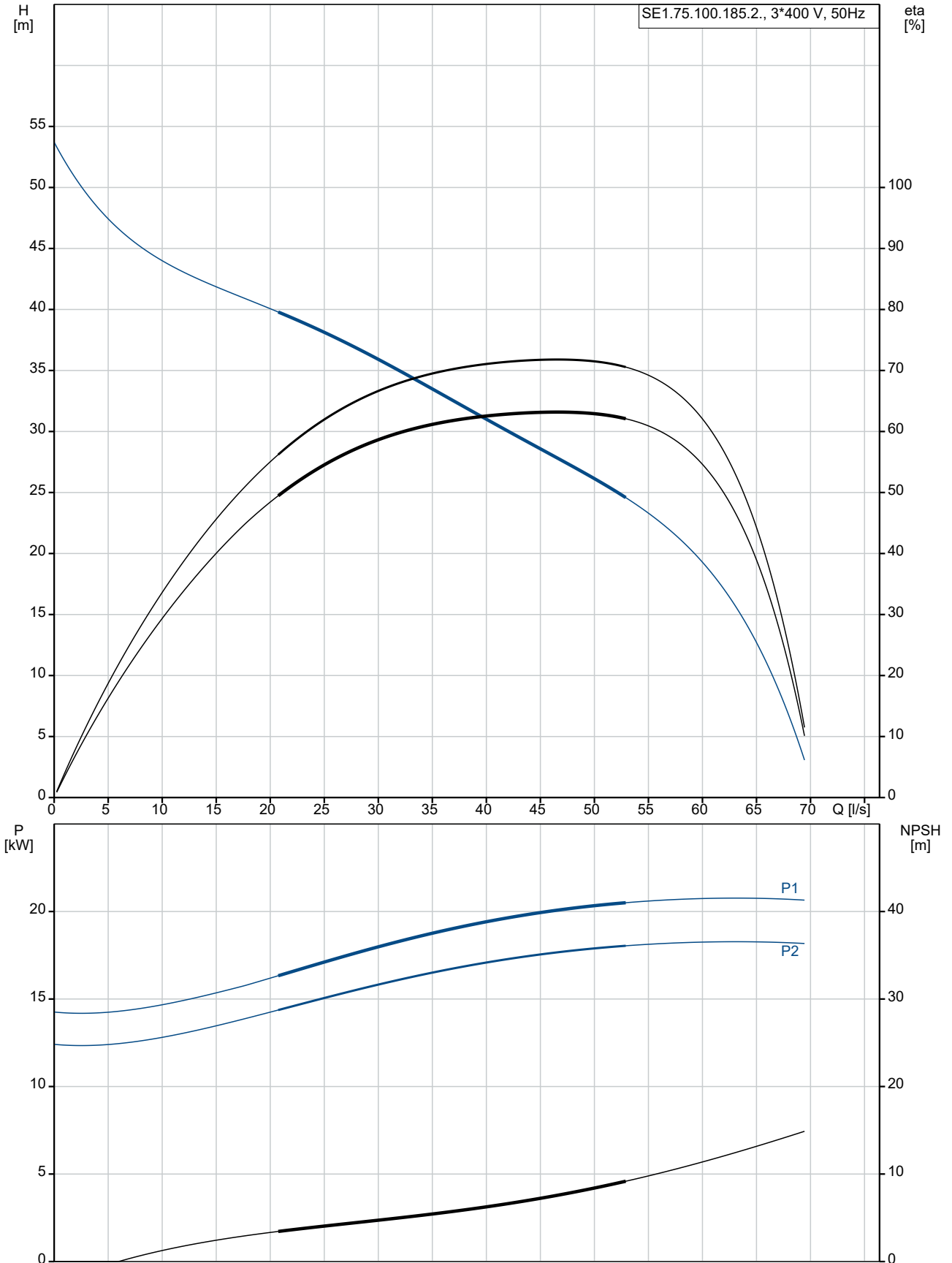
Pump outlet: DN 100



Qty.	Description
	Pressure rating: PN 10
	Maximum installation depth: 20 m
	Auto-coupling: 96090994
	Inst vertical: 96308237
	Base stand: 96102255
	Frame range: 52
	Electrical data:
	Power input - P1: 21 kW
	Rated power - P2: 18.5 kW
	Mains frequency: 50 Hz
	Rated voltage: 3 x 380-415/660-690 V
	Voltage tolerance: +10/-10 %
	Max starts per. hour: 20
	Rated current: 38-35/22-21 A
	Maximum current consumption: 36 A
	Starting current: 318/175 A
	Rated current at no load: 12.8 A
	Rated speed: 2964 rpm
	Motor efficiency at full load: 88 %
	Motor efficiency at 3/4 load: 88 %
	Motor efficiency at 1/2 load: 85 %
	Number of poles: 2
	Start. method: star/delta
	Enclosure class (IEC 34-5): IP68
	Insulation class (IEC 85): H
	Explosion proof: no
	Length of cable: 15 m
	Cable type: S1BN8-F
	Winding resistance: 0.400 Ohm
	Cos phi 1/1: 0.86
	Cos phi 1/2: 0.75
	Cos phi 3/4: 0.84
	Others:
	Net weight: 300 kg
	Country of origin: HU
	Custom tariff no.: 8413709019182742

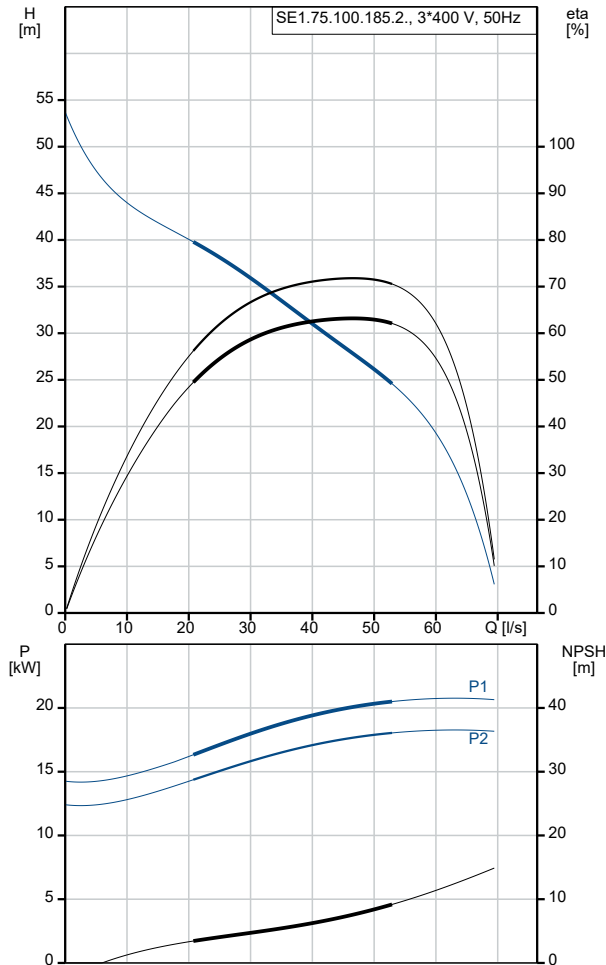


**On request SE1.75.100.185.2.52S.C.N.51D.A.T 50 Hz**





Description	Value
<b>General information:</b>	
Product name:	SE1.75.100.185.2.52S.C.N.51D.A.T
Product No:	On request
EAN number:	On request
Price:	
<b>Technical:</b>	
Maximum flow:	53.1 l/s
Max flow:	53.1 l/s
Head max:	39 m
Type of impeller:	S-TUBE
Maximum particle size:	75 mm
Primary shaft seal:	SIC-SIC
Curve tolerance:	ISO9906:2012 3B
Cooling jacket:	with cooling jacket
<b>Materials:</b>	
Pump housing:	Cast iron
Pump housing:	EN 1561 EN-GJL-250
Impeller:	Cast iron
Impeller:	EN 1561 EN-GJL-250
Motor:	Cast iron
Motor:	EN 1561 EN-GJL-250
<b>Installation:</b>	
Maximum ambient temperature:	40 °C
Flange standard:	DIN
Pump inlet:	DN 100
Pump outlet:	DN 100
Pressure rating:	PN 10
Maximum installation depth:	20 m
Installation:	C
Inst dry/wet:	D/S
Installation:	vertical
Auto-coupling:	96090994
Inst vertical:	96308237
Base stand:	96102255
Frame range:	52
<b>Liquid:</b>	
Pumped liquid:	Any Newtonian liquid
Liquid temperature range:	0 .. 40 °C
Density:	998.2 kg/m <sup>3</sup>
<b>Electrical data:</b>	
Power input - P1:	21 kW
Rated power - P2:	18.5 kW
Mains frequency:	50 Hz
Rated voltage:	3 x 380-415/660-690 V
Voltage tolerance:	+10/-10 %
Max starts per. hour:	20
Rated current:	38-35/22-21 A
Maximum current consumption:	36 A
Starting current:	318/175 A
Rated current at no load:	12.8 A
Rated speed:	2964 rpm
Motor efficiency at full load:	88 %
Motor efficiency at 3/4 load:	88 %
Motor efficiency at 1/2 load:	85 %
Number of poles:	2
Start. method:	star/delta
Enclosure class (IEC 34-5):	IP68



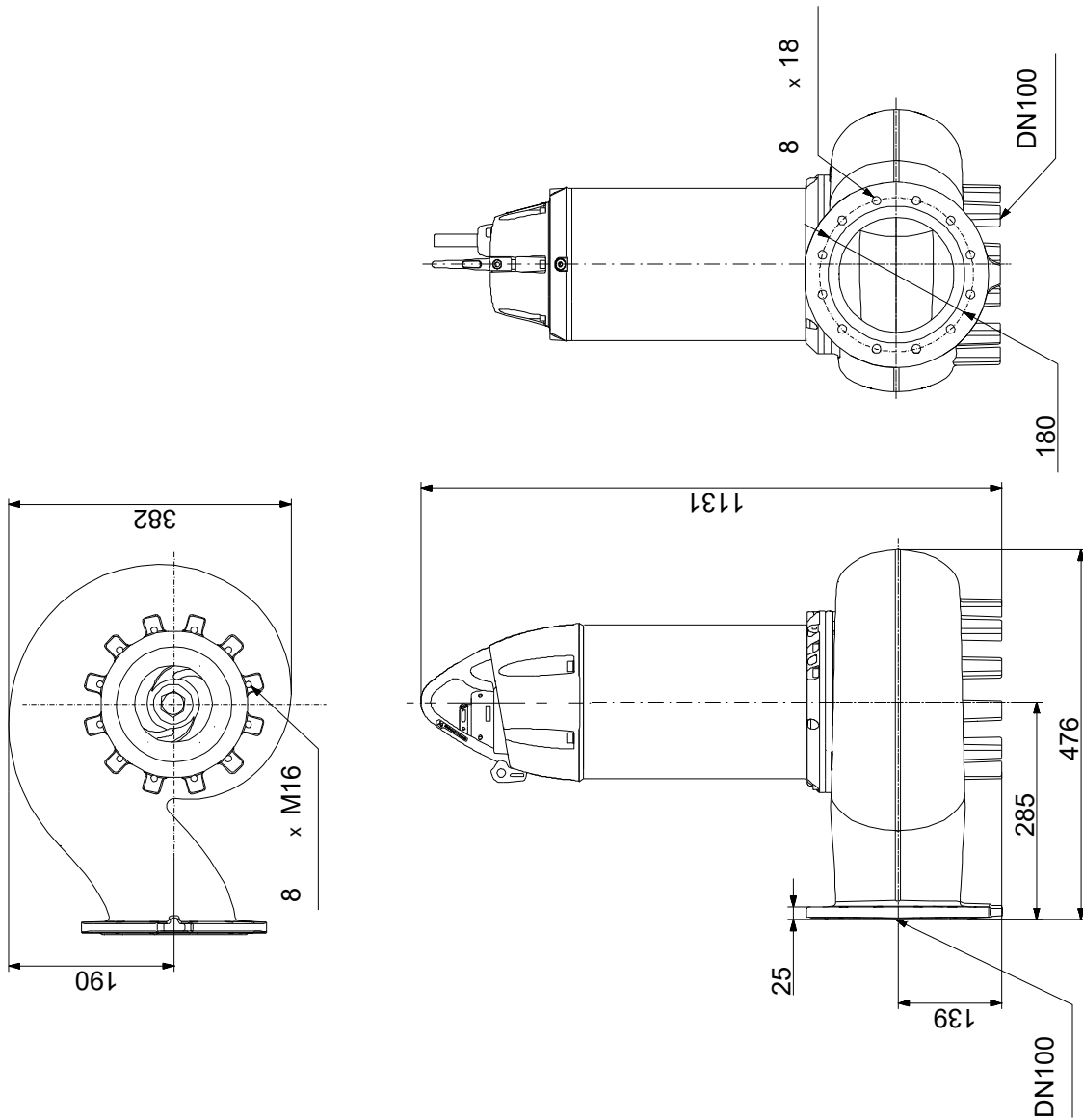


**Company name:** Pumps and Pipes  
**Created by:** Mitchel Sherwood  
**Phone:** 07 3208 9499  
**Email:** mitchel@pumpsandpipes.net.au  
**Date:** 28/08/2021

Description	Value
Insulation class (IEC 85):	H
Explosion proof:	no
Built-in motor protection:	THERMISTOR
Length of cable:	15 m
Cable type:	S1BN8-F
Cable size:	7G4+5X1.5ST
Cable resistance:	4.95 mOhm/m
Winding resistance:	0.400 Ohm
Cos phi 1/1:	0.86
Cos phi 1/2:	0.75
Cos phi 3/4:	0.84
<b>Controls:</b>	
Moisture sensor:	with moisture sensors
<b>Others:</b>	
Net weight:	300 kg
Sales region:	GPA
Country of origin:	HU
Custom tariff no.:	8413709019182742



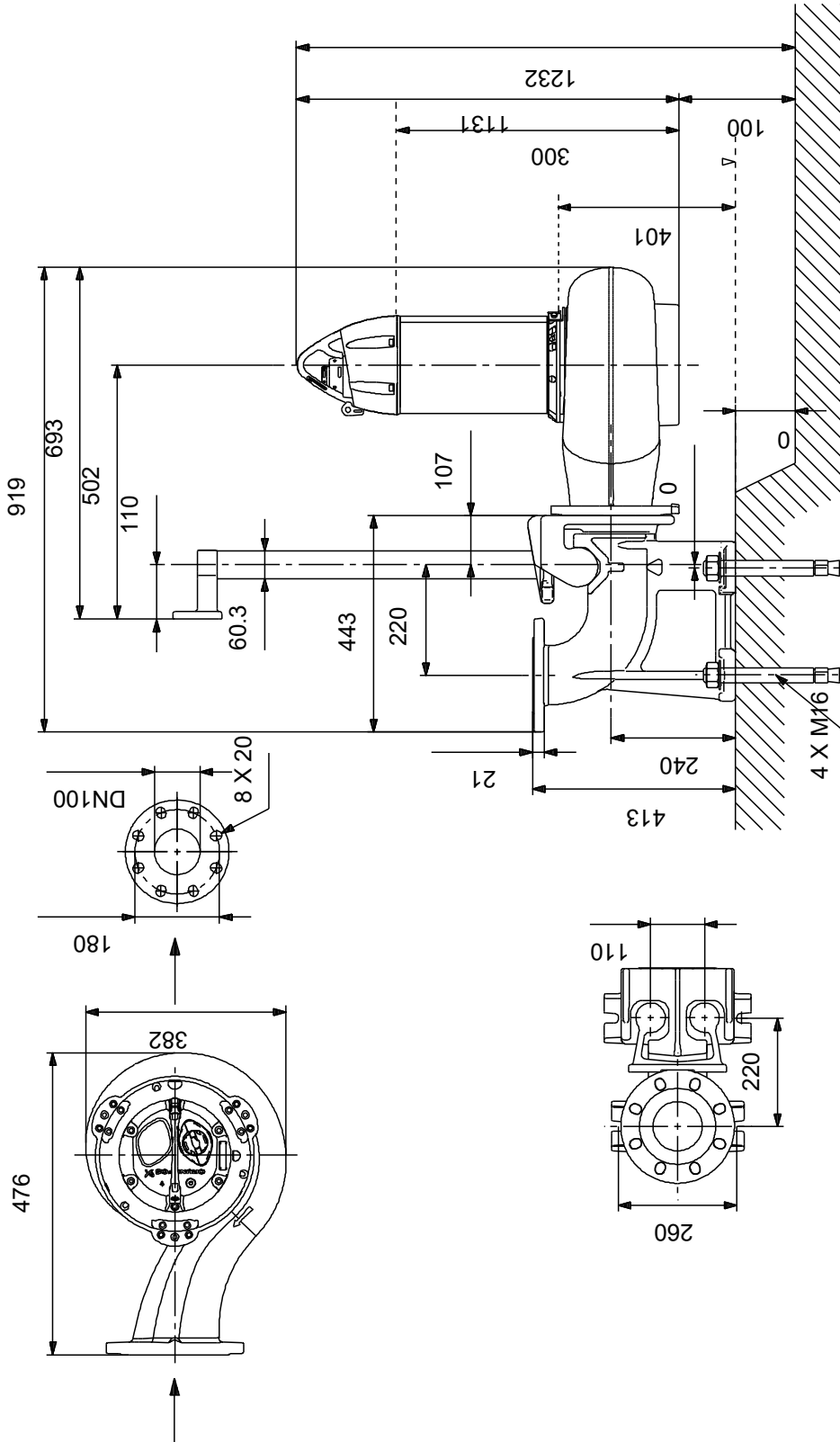
**On request SE1.75.100.185.2.52S.C.N.51D.A.T 50 Hz**



Note! All units are in [mm] unless others are stated.  
Disclaimer: This simplified dimensional drawing does not show all details.



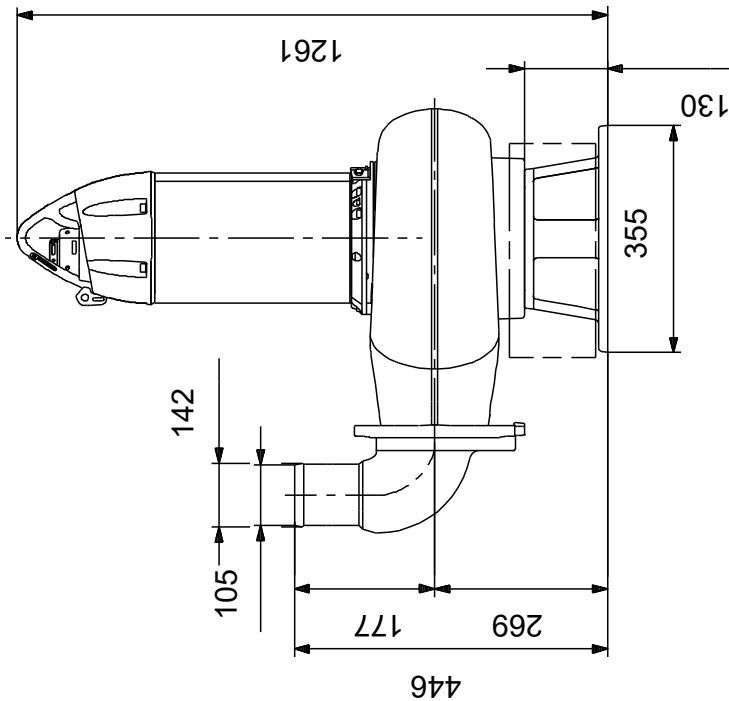
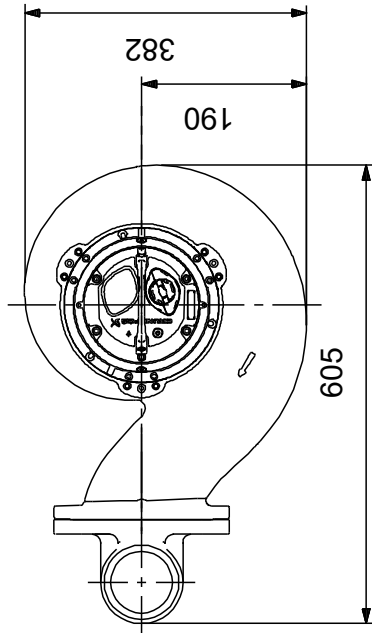
**On request SE1.75.100.185.2.52S.C.N.51D.A.T 50 Hz**



Note! All units are in [mm] unless others are stated.  
Disclaimer: This simplified dimensional drawing does not show all details.



**On request SE1.75.100.185.2.52S.C.N.51D.A.T 50 Hz**

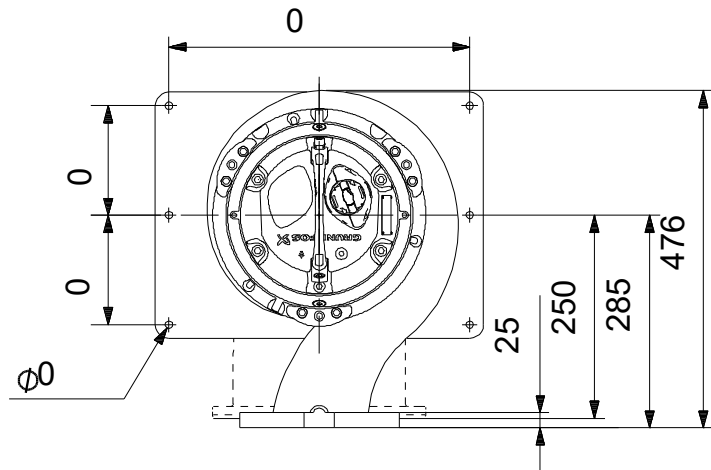
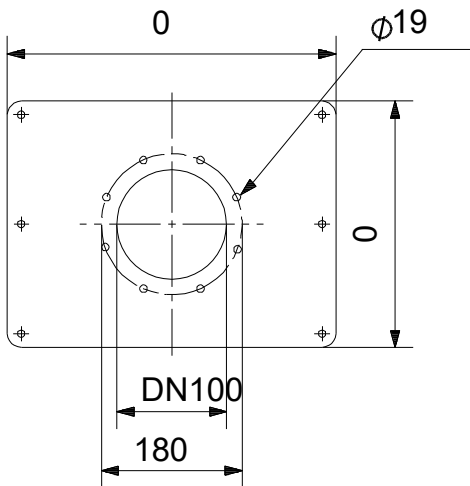
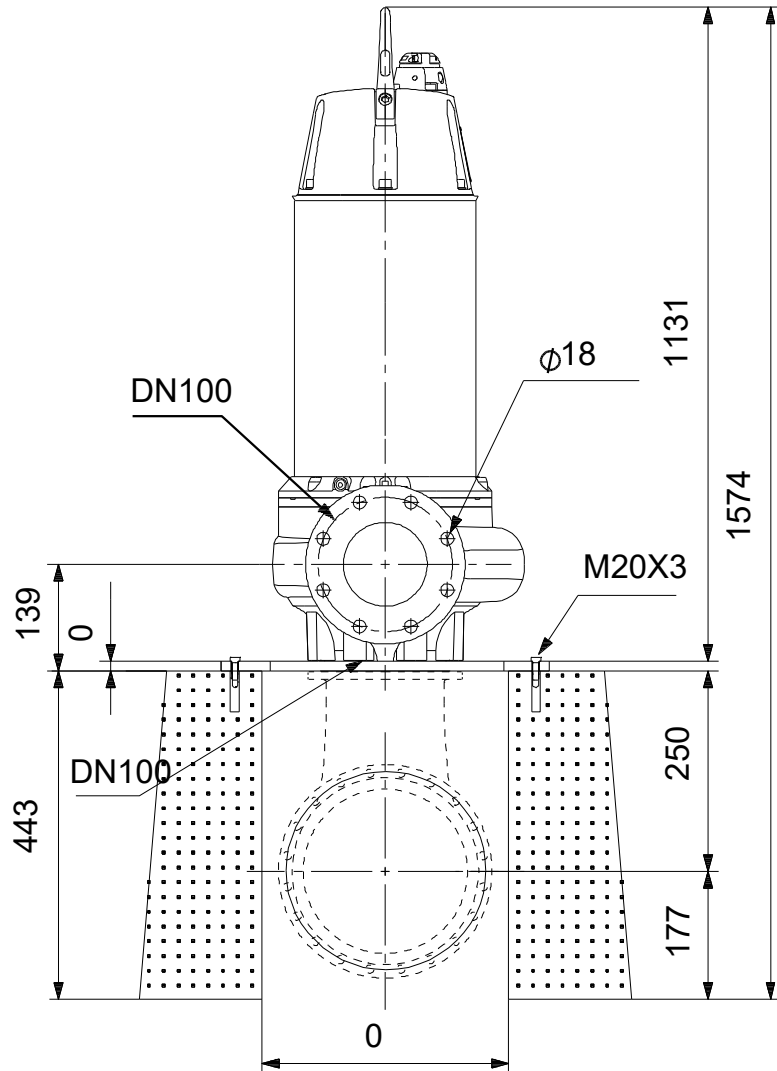


Note! All units are in [mm] unless others are stated.  
Disclaimer: This simplified dimensional drawing does not show all details.





**On request SE1.75.100.185.2.52S.C.N.51D.A.T 50 Hz**



Note! All units are in [mm] unless others are stated.  
Disclaimer: This simplified dimensional drawing does not show all details.