



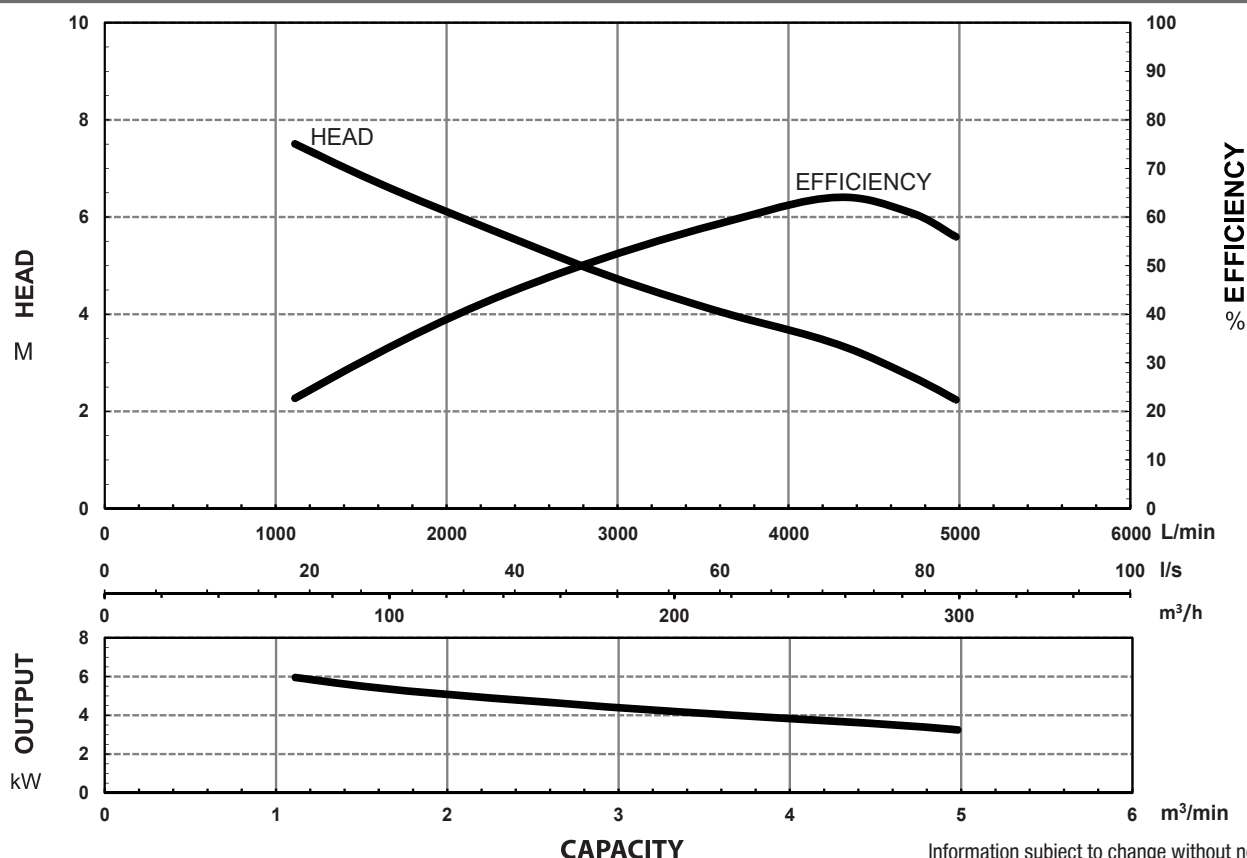
### SPECIFICATIONS

Power	5.5kW / 7.5HP
Frequency	50Hz
Discharge	200mm / 8 inch flange tail
Weight (Excl cable)	116 Kg
Solid Passage	23 mm
Phase	3ø
Voltage	415
Full Load Amps	12.1
Maximum Liquid Temperature	0-40° C
Motor type	Dry motor
Motor Speed	4 Pole (1440 rpm)
Motor Insulation	Class F
Motor Protection	IP68
Protector	No internal over load
Motor Bearings	Ball Type
Seal Method	Dual Mechanical seal Upper: Carbon/Ceramic Lower: Silicon/Silicon
Impeller Type	Axial-flow
Motor Cover Construction	BC6 Bronze
Motor Casing Construction	304 Stainless Steel
Motor Shaft Construction	304 Stainless Steel
Pump Casing Construction	FC200 Cast Iron
Impeller Construction	ALBC3 Aluminium Bronze
Strainer Construction	304 Stainless Steel
Cable Material	H07RN-F

### MODEL NUMBER STRUCTURE

<b>U</b>	Ultraflow
<b>M</b>	'M' indicates Manual, without floatswitch
<b>AX</b>	'AX' indicates 'Axial Flow' style
<b>N</b>	'N' indicates series
<b>5500</b>	Power consumption in 'Watts'
<b>200</b>	Outlet size
<b>3</b>	'3' indicates 415 volt three phase

### PERFORMANCE CURVES

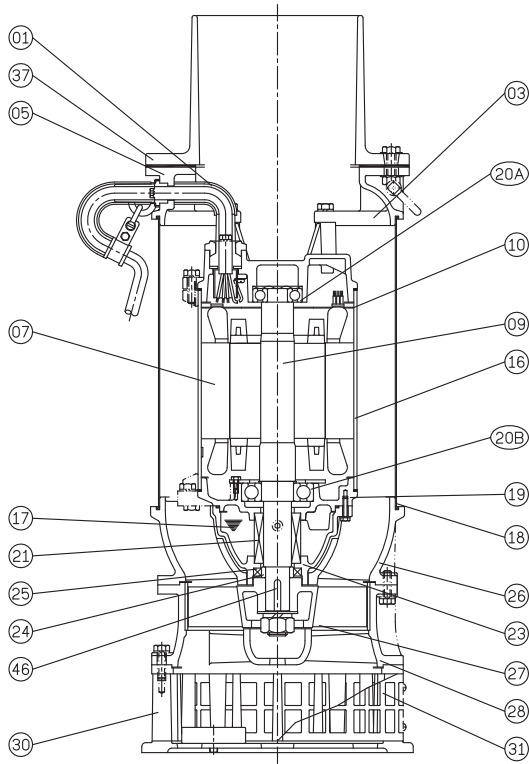


Information subject to change without notice.

Models: UMAXN5500/200/3



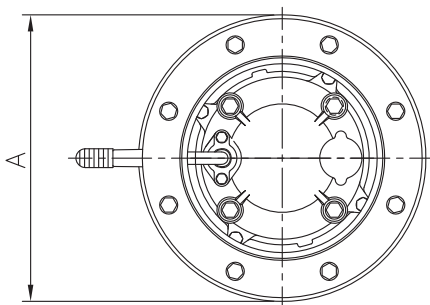
**SECTIONAL DRAWING & MATERIALS LIST**



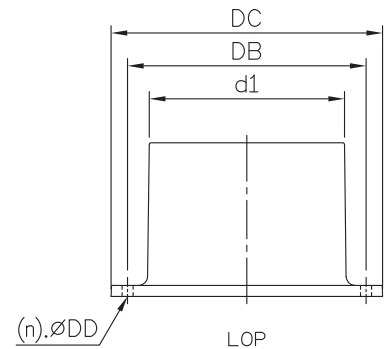
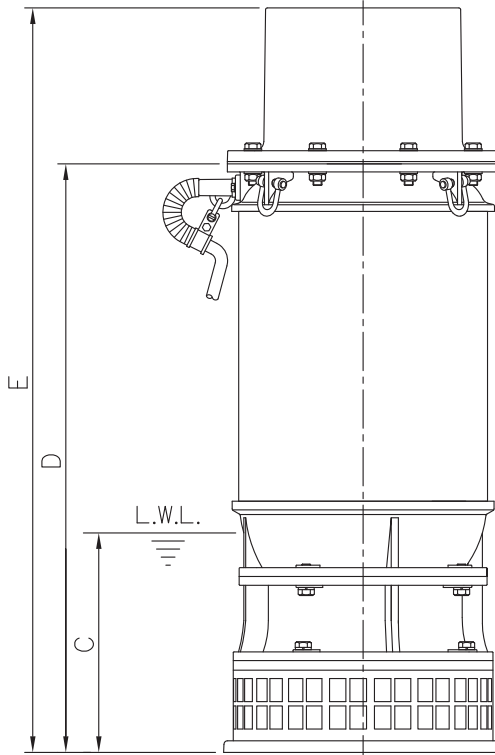
PART NUMBER	DESCRIPTION	MATERIAL
01	Cable	H07RN-F
03	Upper Motor Cap	BC6 Bronze
05	Upper Outlet Casing	Cast Iron FC-200
07	Motor Stator	
09	Shaft With (With Rotor)	(Shaft) Stainless Steel 304
10	Auto Cut Out Overload	
14	Capacitor	
16	Motor Casing	Stainless Steel 304
17	Lubricant	Turbine Oil
18	Outer Cover	Stainless Steel 304
19	Bearing Housing	BC6 Bronze
20A & 20B	Upper Bearing & Lower Bearing	
21	Mechanical Seal	Upper: Carbon/Ceramic Lower: Silicon/Silicon
23	Mechanical Seal Housing	BC6 Bronze
24	Oil Seal Shaft Sleeve	304L Stainless Steel
25	Oil Seal	Nitrile
26	Pump Casing	Cast Iron FC-200
27	Impeller	ALBC3 Aluminium Bronze
28	Pump Casing & Wear Ring	304 Stainless Steel
30	Base Footing	Cast Iron FC-200
31	Strainer	304 Stainless Steel
37	Outlet Hose tail	Cast Iron FC-200
41	Handle	304 Stainless Steel
46	Impeller Key	304 Stainless Steel
47	O'rings & Nut Cover	

**DIMENSIONAL DRAWING**

When ordering spare parts as above, simply add the pump model number to the part number from the list above. For example, a power lead (part '01'). the complete spare part name would be written as '01-UMAXN5500/200/3'.



DIMENSIONS - mm			
A	C	D	E
340	250	733	923



DIMENSIONS - mm			
d1	DB	DC	DD
200	285	330	15

Information subject to change without notice.



T 1300 662 787 | F 1300 662 717  
 22-24 Somerville Circuit, Emu Plains NSW 2750  
 E sales@generalpumps.com.au www.generalpumps.com.au